

## Product datasheet for RC202410

### APMAP (NM\_020531) Human Tagged ORF Clone

#### Product data:

Product Type:	Expression Plasmids
Product Name:	APMAP (NM_020531) Human Tagged ORF Clone
Tag:	Myc-DDK
Symbol:	APMAP
Synonyms:	BSCv; C20orf3
Mammalian Cell Selection:	Neomycin
Vector:	pCMV6-Entry (PS100001)
E. coli Selection:	Kanamycin (25 ug/mL)
ORF Nucleotide Sequence:	>RC202410 ORF sequence Red=Cloning site Blue=ORF Green=Tags(s)

TTTTGTAATACGACTCACTATAGGGCGGCCGGGAATTCGTCGACTGGATCCGGTACCGAGGAGATCTGCC  
GCC**CGATCGCC**

ATGAGCGAGGGCGGACGGGCTGCGACAGCGCCGGCCCTGCGGCCGCAGGTCGTCACAGACGATGATGGCC  
AGGCCCGGAGGCTAAGGACGGCAGCTCCTTTAGCGGCAGAGTTTTCCGAGTGACCTTCTTGATGCTGGC  
TGTTTCTCTCACCCTTCCCCTGCTTGGAGCCATGATGCTGCTGGAATCTCCTATAGATCCACAGCCTCTC  
AGCTTCAAAGAACCCCGCTCTTGCTTGGTGTCTGCATCCAAATACGAAGCTGCGACAGGCAGAAAGGC  
TGTTTGAAAATCAACTTGTGGACCGGAGTCCATAGCACATATTGGGGATGTGATGTTTACTGGGACAGC  
AGATGGCCGGTTCGTAATACTTGAATGGTGAATAGAGACCATTGCCCGGTTTGGTTCGGGCCCTTGC  
AAAACCCGAGATGATGAGCCTGTGTGGGAGACCCCTGGGTATCCGTGCAGGGCCAATGGGACTCTCT  
TTGTGGCCGATGCATACAAGGGACTATTTGAAGTAAATCCCTGGAACGTGAAGTGAAGTCTGCTGTGC  
CTCCGAGACACCCATTGAGGGGAAGAACATGTCCTTTGTGAATGATCTTACAGTCACTCAGGATGGGAGG  
AAGATTTATTTACCGATTCTAGCAGCAATGGCAAAGACGAGACTACCTGCTTCTGGTGTGGAGGGCA  
CAGATGACGGGCGCTGCTGGAGTATGATACTGTGACCAGGAAGTAAAAGTTTTATTGGACCAGCTGCG  
GTTCCCGAATGGAGTCCAGCTGTCTCCTGCAGAAGACTTTGTCTGGTGGCAGAAACAACCATGGCCAGG  
ATACGAAGAGTCTACGTTTCTGGCCTGATGAAGGGCGGGGCTGATCTGTTTGTGGAGAACATGCCTGGAT  
TTCCAGACAACATCCGGCCAGCAGCTCTGGGGGTAAGTGGGTGGGCATGTCGACCATCCGCCCTAACCC  
TGGGTTTTCCATGCTGGATTTCTTATCTGAGAGACCCTGGATTAAGGATGATTTTAAAGCTCTTTAGT  
CAAGAGACGGTGTGAAGTTTGTGCCGCGGTACAGCCTCGTCTAGAACTCAGCGACAGCGGTGCCTTCC  
GGAGAAGCCTGCATGATCCCGATGGGCTGGTGGCCACCTACATCAGCGAGGTGCACGAACACGATGGGCA  
CCTGTACTGGGCTTTTCAGTCCCCCTTCTCTGCAGACTCAGCCTCCAGGCTGTT

**ACGGT**ACGGCGCGCTCGAGCAGAACTCATCTCAGAAGAGGATCTGGCAGCAATGATATCCTGGATT  
ACAAGGATGACGACGATAAGGTTTAA



[View online »](#)

**Protein Sequence:** >RC202410 protein sequence  
Red=Cloning site Green=Tags(s)

MSEADGLRQRRLRPQVVTTDDDGQAPEAKDGSSFSGRVFRVTFMLAVSLTVPLL GAMLLESPIDPQPL  
 SFKEPPLLLGVLHPNTKLRQAERLFENQLVGPESIAHIGDVMFTGTADGRVVKLENGE IETIARFGSGPC  
 KTRDDEPVCGRPLGIRAGPNGTLFVADAYKGLFEVNPWKREVKLLLSSETPIEGKNMSFVNDLTVTQDGR  
 KIYFTDSSSKWQRRDYLLLVMEGTDDGRLLLEYDVTREVKVLLDQLRFPNGVQLSPAEDFVLVAETTMAR  
 IRRVYVSGLMKGGADLFVENMPGFPDNIRPSSGGYWVGMSTIRPNPGFSMLDFLSERPWIKRMIFKLF S  
 QETVMKFVPRYSLVLELSDSGAFRRSLHDPDGLVATYISEVHEHDGHL YLGSFRSPFLCRLSLQAV

TRTRPLEQKLISEEDLAANDILDYKDDDDKV

**Chromatograms:** [https://cdn.origene.com/chromatograms/mk6150\\_g05.zip](https://cdn.origene.com/chromatograms/mk6150_g05.zip)

**Restriction Sites:** SgfI-MluI

**Cloning Scheme:**



\* The last codon before the Stop codon of the ORF

**ACCN:** NM\_020531

**ORF Size:** 1248 bp

**OTI Disclaimer:** The molecular sequence of this clone aligns with the gene accession number as a point of reference only. However, individual transcript sequences of the same gene can differ through naturally occurring variations (e.g. polymorphisms), each with its own valid existence. This clone is substantially in agreement with the reference, but a complete review of all prevailing variants is recommended prior to use. [More info](#)

**OTI Annotation:** This clone was engineered to express the complete ORF with an expression tag. Expression varies depending on the nature of the gene.

**Components:** The ORF clone is ion-exchange column purified and shipped in a 2D barcoded Matrix tube containing 10ug of transfection-ready, dried plasmid DNA (reconstitute with 100 ul of water).

**Reconstitution Method:**

1. Centrifuge at 5,000xg for 5min.
2. Carefully open the tube and add 100ul of sterile water to dissolve the DNA.
3. Close the tube and incubate for 10 minutes at room temperature.
4. Briefly vortex the tube and then do a quick spin (less than 5000xg) to concentrate the liquid at the bottom.
5. Store the suspended plasmid at -20°C. The DNA is stable for at least one year from date of shipping when stored at -20°C.

**RefSeq:** [NM\\_020531.3](#)

**RefSeq Size:** 2251 bp

**RefSeq ORF:** 1251 bp

**Locus ID:** 57136

**UniProt ID:** [Q9HDC9](#)

**Cytogenetics:** 20p11.21

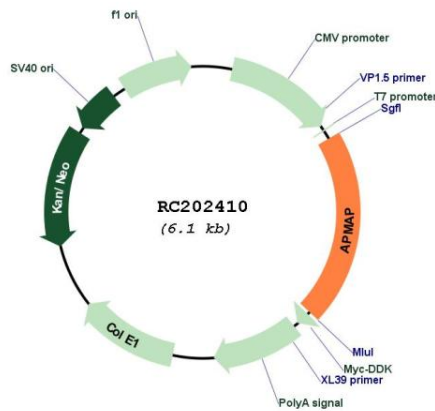
**Domains:** Str\_synth

**Protein Families:** Transmembrane

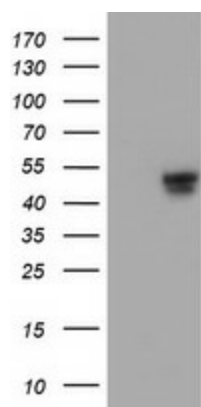
**MW:** 46.5 kDa

**Gene Summary:** Exhibits strong arylesterase activity with beta-naphthyl acetate and phenyl acetate. May play a role in adipocyte differentiation.[UniProtKB/Swiss-Prot Function]

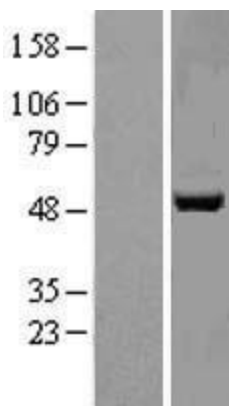
**Product images:**



Circular map for RC202410



HEK293T cells were transfected with the pCMV6-ENTRY control (Cat# [PS100001], Left lane) or pCMV6-ENTRY C20orf3 (Cat# RC202410, Right lane) cDNA for 48 hrs and lysed. Equivalent amounts of cell lysates (5 ug per lane) were separated by SDS-PAGE and immunoblotted with anti-C20orf3 (Cat# [TA504220]). Positive lysates [LY402795] (100ug) and [LC402795] (20ug) can be purchased separately from OriGene.



Western blot validation of overexpression lysate (Cat# [LY402795]) using anti-DDK antibody (Cat# [TA50011-100]). Left: Cell lysates from untransfected HEK293T cells; Right: Cell lysates from HEK293T cells transfected with RC202410 using transfection reagent MegaTran 2.0 (Cat# [TT210002]).