

## Product datasheet for RC202021

### LYPLA2 (NM\_007260) Human Tagged ORF Clone

#### Product data:

Product Type:	Expression Plasmids
Product Name:	LYPLA2 (NM_007260) Human Tagged ORF Clone
Tag:	Myc-DDK
Symbol:	LYPLA2
Synonyms:	APT-2; APT2; DJ886K2.4
Mammalian Cell Selection:	Neomycin
Vector:	pCMV6-Entry (PS100001)
E. coli Selection:	Kanamycin (25 ug/mL)
ORF Nucleotide Sequence:	>RC202021 ORF sequence Red=Cloning site Blue=ORF Green=Tags(s)

TTTTGTAATACGACTCACTATAGGGCGGCCGGAATTCGTCGACTGGATCCGGTACCGAGGAGATCTGCC  
GCC**CGATCGCC**

ATGTGTGGTAACACCATGTCTGTGCCCTGCTCACCGATGCTGCCACCGTGTCTGGAGCTGAGCGGGAAA  
CGGCCGCGTTATTTTTTACATGGACTTGAGACACAGGGCACAGCTGGGCTGACGCCCTCTCCACCAT  
CCGGCTCCCTCACGTCAGTACATCTGTCCCATGCGCCTAGGATCCCTGTGACCCTCAACATGAAGATG  
GTGATGCCCTCTGGTTGACCTGATGGGGCTGAGTCCAGATGCCCCAGAGGACGAGGCTGGCATCAAGA  
AGGCAGCAGAGAACATCAAGCCTTGATTGAGCATGAAATGAAGAACGGGATCCCTGCCAATCGAATCGT  
CCTGGGAGGCTTTTACAGGGCGGGGCCCTGTCCCTCTACACGGCCCTCACCTGCCCCACCCCTCTGGCT  
GGCATCGTGCGTGTGAGCTGCTGGCTGCCTCTGCACCGGGCCTTCCCCAGGCAGCTAATGGCAGTGCCA  
AGGACCTGGCCATACTCCAGTGCCATGGGGAGCTGGACCCATGGTGCCCGTACGGTTTGGGGCCCTGAC  
GGCTGAGAAGCTCCGGTCTGTTGTACACCTGCCAGGGTCCAGTTCAAGACATACCCGGGTGTCATGCAC  
AGCTCTGTCTCAGGAGATGGCAGCTGTGAAGGAATTTCTTGAGAAGCTGCTGCCTCTGTGC

**ACGCGT**ACGCGGGCGCTCGAGCAGAACTCATCTCAGAAGAGGATCTGGCAGCAAATGATATCTGGATT  
ACAAGGATGACGACGATAAGGTTTAA



[View online »](#)

**Protein Sequence:** >RC202021 protein sequence  
Red=Cloning site Green=Tags(s)

MCGNTMSVPLLDAATVSGAERETA AVIFLHGLGDTGHSWADALSTIRLPHVKYICPHAPRIPVTLNMKM  
 VMPSWFDLMLSPDAPEDEAGIKKAAENIKALIEHEMKNIGIPANRIVLGGFSQGGALSLYTALTCPHPLA  
 GIVALSCWLPLHRAFPAANGSAKDLAILQCHGELDPMVVPVRFGALTAEKLRVSVTPARVQFKTYPGVMH  
 SSCQEMA AVKEFLEKLLPPV

TRTRPLEQKLISEEDLAANDILDYKDDDDKV

**Chromatograms:** [https://cdn.origene.com/chromatograms/mk6305\\_e06.zip](https://cdn.origene.com/chromatograms/mk6305_e06.zip)

**Restriction Sites:** SgfI-MluI

**Cloning Scheme:**

Cloning sites used for ORF Shuttling:



\* The last codon before the Stop codon of the ORF

**ACCN:** NM\_007260

**ORF Size:** 693 bp

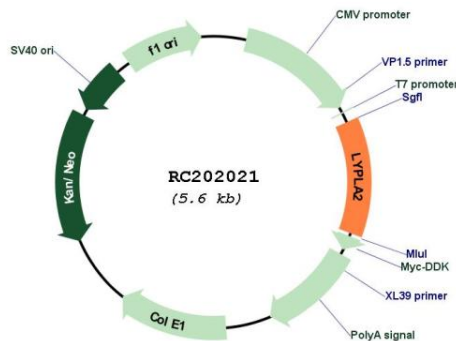
**OTI Disclaimer:** Due to the inherent nature of this plasmid, standard methods to replicate additional amounts of DNA in E. coli are highly likely to result in mutations and/or rearrangements. Therefore, OriGene does not guarantee the capability to replicate this plasmid DNA. Additional amounts of DNA can be purchased from OriGene with batch-specific, full-sequence verification at a reduced cost. Please contact our customer care team at [custsupport@origene.com](mailto:custsupport@origene.com) or by calling 301.340.3188 option 3 for pricing and delivery.

The molecular sequence of this clone aligns with the gene accession number as a point of reference only. However, individual transcript sequences of the same gene can differ through naturally occurring variations (e.g. polymorphisms), each with its own valid existence. This clone is substantially in agreement with the reference, but a complete review of all prevailing variants is recommended prior to use. [More info](#)

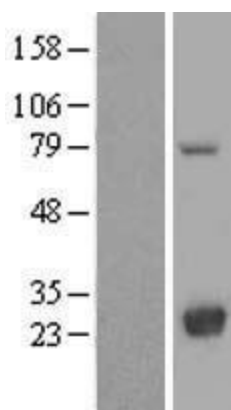
**OTI Annotation:** This clone was engineered to express the complete ORF with an expression tag. Expression varies depending on the nature of the gene.

<b>Components:</b>	The ORF clone is ion-exchange column purified and shipped in a 2D barcoded Matrix tube containing 10ug of transfection-ready, dried plasmid DNA (reconstitute with 100 ul of water).
<b>Reconstitution Method:</b>	<ol style="list-style-type: none"> <li>1. Centrifuge at 5,000xg for 5min.</li> <li>2. Carefully open the tube and add 100ul of sterile water to dissolve the DNA.</li> <li>3. Close the tube and incubate for 10 minutes at room temperature.</li> <li>4. Briefly vortex the tube and then do a quick spin (less than 5000xg) to concentrate the liquid at the bottom.</li> <li>5. Store the suspended plasmid at -20°C. The DNA is stable for at least one year from date of shipping when stored at -20°C.</li> </ol>
<b>RefSeq:</b>	<u><a href="#">NM_007260.3</a></u>
<b>RefSeq Size:</b>	1648 bp
<b>RefSeq ORF:</b>	696 bp
<b>Locus ID:</b>	11313
<b>UniProt ID:</b>	<u><a href="#">O95372</a></u>
<b>Cytogenetics:</b>	1p36.11
<b>Domains:</b>	abhydrolase_2
<b>Protein Pathways:</b>	Glycerophospholipid metabolism
<b>MW:</b>	24.7 kDa
<b>Gene Summary:</b>	Lysophospholipases are enzymes that act on biological membranes to regulate the multifunctional lysophospholipids. There are alternatively spliced transcript variants described for this gene but the full length nature is not known yet. [provided by RefSeq, Jul 2008]

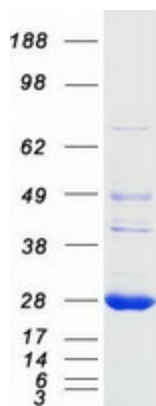
**Product images:**



Circular map for RC202021



Western blot validation of overexpression lysate (Cat# [LY416098]) using anti-DDK antibody (Cat# [TA50011-100]). Left: Cell lysates from untransfected HEK293T cells; Right: Cell lysates from HEK293T cells transfected with RC202021 using transfection reagent MegaTran 2.0 (Cat# [TT210002]).



Coomassie blue staining of purified LYPLA2 protein (Cat# [TP302021]). The protein was produced from HEK293T cells transfected with LYPLA2 cDNA clone (Cat# RC202021) using MegaTran 2.0 (Cat# [TT210002]).