

Product datasheet for **RC201848**

AP4 (REPIN1) (NM_014374) Human Tagged ORF Clone

Product data:

Product Type:	Expression Plasmids
Product Name:	AP4 (REPIN1) (NM_014374) Human Tagged ORF Clone
Tag:	Myc-DDK
Symbol:	AP4
Synonyms:	AP4; RIP60; Zfp464; ZNF464
Mammalian Cell Selection:	Neomycin
Vector:	pCMV6-Entry (PS100001)
E. coli Selection:	Kanamycin (25 ug/mL)



[View online »](#)

ORF Nucleotide Sequence:

>RC201848 ORF sequence
 Red=Cloning site Blue=ORF Green=Tags(s)

TTTTGTAATACGACTCACTATAGGGCGGCCGGAATTCGTCGACTGGATCCGGTACCGAGGAGATCTGCC
 GCC**CGGATCGCC**

ATGGGCCTGGCCAGCCCGACTCCTTTCTGGCCCTCCAGGAGTCACCCAGACCCTGGGAAGGAGT
 CCCGCGGCTGAGGCAACAAGGCAGCTAGTGGCCAGTCTGGTCCCAAGCCCCAGGCAGGCCATCG
 CTGTGCCACTGTGCAAGGCACTTCCCTGGCTGGGTGGCTCTGTGGCTTACACCCGCGGTGCCAGGCC
 CGGCTGCCCTTGCCTGCCCTGAGTGTGGCCGTCGCTTTCGCATGCCCTTCTTAGCACTGCACCGCC
 AGGTCCATGCTGCTGCCACCCAGACCTGGGCTTTCCTGCCACCTCTGTGGCAGAGCTTCCGAGGCTG
 GGTGGCCCTGGTCTGCATCTGCGGGCCATTAGCTGCAAAGCGGCCATCGCTTGTCCAAATGCGAG
 AGACGCTTCTGGCGACGAAAGCAGCTTCGAGCTCATCTGCGGGGTGCCACCTCCCGCCCCGAGGCC
 GGCCCTTCATATCGGCAACTGTGGCCGAGCTTTCAGTGGGACAGCTAGTTGCCACAAGCGGT
 GCAGTAGCTGAGGCCCTGGAGGAGGCCGAGCCAAGGCTCTGGGGCCCCGGCCAGGGGCCCGCCGCG
 GTGACCGCCCCCGGCCGGTGGAGATGCCGTCGACCGCCCTTCCAGTGTGCCTGTTGTGGCAAGCGCT
 TCCGGCACAAGCCCAACTTGATCGCTCACCGCCGCTGCACACGGGCGAGCGGCCACCAGTGCCCGA
 GTGCGGAAGCGCTTACCAATAAGCCCTATCTGACTTCGACCGGCGCATCCACACCGGCGAGAAGCC
 TACCCGTGCAAAGAGTGGCGCCGCGCTTCCGGCACAACCCAACTGCTGTCTCACAGCAAGATTACA
 AGCGATCCGAGGGGTGGGCCAGGCCGCCCGGGCCGGGAGCCCCAGCTGCCAGCGGCCCCAGGA
 GTCGCGGCCGAGCCACCCGGCGGTACCTCTGAAACCGGCCAGGAGCCGCCAGGGGCCCGCCA
 GAGCACCCGAGGACCCGATCGAAGCCCCCTCCCTCTACAGCTGCGACGACTGCGGCAGGAGCTTCC
 GCTGGAGCGCTTCTGCGGGCCACAGCGGCAGCACACCGGGGAGCGCCCTTACCTGCGCCGAGTG
 CGGAAGAAGCTTCGGCAAGAAGACGCACCTGGTGGCGCACTCGCGGTGCACTCCGGCGAGCGCCCTC
 GCCTGCGAGGAGTGGGCGCCGCTTCTCCAGGGCAGCCATCTGGCGGCGCATCGGCGGACACGCCCC
 CCGATCGGCCCTTCTGTGTCCGACTGCGGCAAGGCCTTCCGCCACAACCCCTACCTGGCGGCGACCG
 GCGCATCCACACCGGCGAGAAGCCCTACGCTGCCCCGACTGCGGCAAAGCCTTACGCCAGAAGTCAAC
 CTGGTGTGCGACCGGCGCATCCACACGGGCGAGCGGCCCTACGCTGTCCGACTGCGACCGCAGCTTCA
 GCCAGAAGTCAAACCTCATACCCACCGCAAGAGCCACATCCGGGACGGCGCCTTCTGCTGTGCCATCTG
 TGCCAGACCTTCGACGACGAGGAGACTCCTGGCCACCAGAAGAAGCAGATGTC

ACGCGTACGCGGCCGCTCGAGCAGAACTCATCTCAGAAGAGGATCTGGCAGCAAATGATATCCTGGATT
 ACAAGGATGACGACGATAAGGTTTAA

Protein Sequence:

>RC201848 protein sequence
 Red=Cloning site Green=Tags(s)

MGLAQPRLLSGPSQESPTLKGESRGLRQQTSVAQSGAQAPGRAHRCACRRHFPGWVALWLHTRRCQA
 RLPLPCPECGRFRHAPFLALHRQVHAAATPDLGFACHLCQSFRGWVALVLHLRAHSAKRPIACPKCE
 RRFWRRKQLRAHLRRCHPPAPEARPFICGNCGRSFAQWDQLVAHKRVHVAEAL EEAALKGPRPRGRPA
 VTAPRPGDAVDRPFQACCGKRFRHKPNLIAHRRVHTGERPHQCPECGRFTNKPYLTSRRRIHTGEKP
 YPCKEGRFRHKNLLSHSKIHKRSEGSQAAPGPGSPQLPAGPQESAAEPTPAVPLKPAQEPPPGAPP
 EHPQDPIEAPPSLYSCDDCGRSFRLEFLRAHQHQHTGERPFTCAECGNFNGKTHLVAHSRVHSGERP
 ACEECGRRFSGSHLAAHRRDHAPDRPFVCPDCGKAFRHKPYLAAHRRRIHTGEKPYVCPDCGKAFS
 QKSNLVSHRRRIHTGERPYACPCDRSFSQKSNLITHRSHIRDFCAICGQTFDDEERLLAHQKKHDV

TRTRPLEQKLI SEEDLAANDILDYKDDDDKV

Chromatograms:

https://cdn.origene.com/chromatograms/mk6398_a10.zip

Restriction Sites:

Sgfl-Mlul

Cloning Scheme:


ACCN: NM_014374

ORF Size: 1668 bp

OTI Disclaimer: The molecular sequence of this clone aligns with the gene accession number as a point of reference only. However, individual transcript sequences of the same gene can differ through naturally occurring variations (e.g. polymorphisms), each with its own valid existence. This clone is substantially in agreement with the reference, but a complete review of all prevailing variants is recommended prior to use. [More info](#)

OTI Annotation: This clone was engineered to express the complete ORF with an expression tag. Expression varies depending on the nature of the gene.

Components: The ORF clone is ion-exchange column purified and shipped in a 2D barcoded Matrix tube containing 10ug of transfection-ready, dried plasmid DNA (reconstitute with 100 ul of water).

Reconstitution Method:

1. Centrifuge at 5,000xg for 5min.
2. Carefully open the tube and add 100ul of sterile water to dissolve the DNA.
3. Close the tube and incubate for 10 minutes at room temperature.
4. Briefly vortex the tube and then do a quick spin (less than 5000xg) to concentrate the liquid at the bottom.
5. Store the suspended plasmid at -20°C. The DNA is stable for at least one year from date of shipping when stored at -20°C.

RefSeq: [NM_014374.3](#), [NP_055189.2](#)

RefSeq Size: 2894 bp

RefSeq ORF: 1704 bp

Locus ID: 29803

UniProt ID: [Q9BWE0](#)

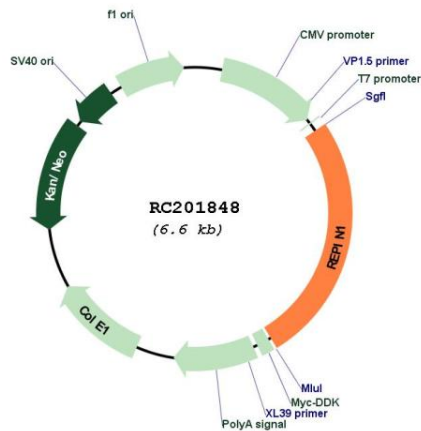
Cytogenetics: 7q36.1

Domains: zf-C2H2

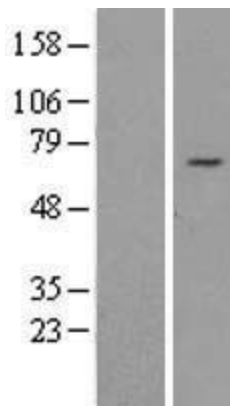
MW: 62.3 kDa

Gene Summary: Sequence-specific double-stranded DNA-binding protein required for initiation of chromosomal DNA replication. Binds on 5'-ATT-3' reiterated sequences downstream of the origin of bidirectional replication (OBR) and a second, homologous ATT sequence of opposite orientation situated within the OBR zone. Facilitates DNA bending.[UniProtKB/Swiss-Prot Function]

Product images:



Circular map for RC201848



Western blot validation of overexpression lysate (Cat# [LY420504]) using anti-DDK antibody (Cat# [TA50011-100]). Left: Cell lysates from untransfected HEK293T cells; Right: Cell lysates from HEK293T cells transfected with [RC224200] using transfection reagent MegaTran 2.0 (Cat# [TT210002]).