

Product datasheet for **RC201824**

UBE2V1 (NM_001032288) Human Tagged ORF Clone

Product data:

Product Type: Expression Plasmids
Product Name: UBE2V1 (NM_001032288) Human Tagged ORF Clone
Tag: Myc-DDK
Symbol: UBE2V1
Synonyms: CIR1; CROC-1; CROC1; UBE2V; UEV-1; UEV1; UEV1A
Mammalian Cell Selection: Neomycin
Vector: pCMV6-Entry (PS100001)
E. coli Selection: Kanamycin (25 ug/mL)
ORF Nucleotide Sequence: >RC201824 ORF sequence
Red=Cloning site Blue=ORF Green=Tags(s)

TTTTGTAATACGACTCACTATAGGGCGGCCGGAATTCGTCGACTGGATCCGGTACCGAGGAGATCTGCC
GCC**CGATCGCC**

ATGGCAGCCACCACGGGCTCGGGAGTAAAAGTCCCTCGCAATTTCCGACTGTTGGAAGAACTCGAAGAAG
GCCAGAAAGGAGTAGGAGATGGCACAGTTAGCTGGGTCTAGAAGATGACGAAGACATGACACTTACAAG
ATGGACAGGGATGATAATTGGGCTCCAAGAACAATTTATGAAAACCGAATATACAGCCTTAAAAATAGAA
TGTGGACCTAAAATACCCAGAAGCACCCCTTTGTAAGATTTGTAACAAAATTAATATGAATGGAGTAA
ATAGTTCTAATGGAGTGGTGGACCAAGAGCCATATCAGTGCTAGCAAAATGGCAGAATTCATATAGCAT
CAAAGTTGTCCTGCAAGAGCTTCGGCGCCTAATGATGTCTAAAGAAAATATGAAACTCCCTCAGCCGCC
GAAGGACAGTGTACAGCAAT

ACGCGTACGCGGCCGCTCGAGCAGAACTCATCTCAGAAGAGGATCTGGCAGCAAATGATATCCTGGATT
ACAAGGATGACGACGATAAGGTTTAA

Protein Sequence: >RC201824 protein sequence
Red=Cloning site Green=Tags(s)
MAATTGSGVKVPRNFRLLLEEELGQKGVGDGTVSWGLEDDEMTLTRWTGMIIGPPRTIYENRIYSLKIE
CGPKYPEAPPFVRFVTKINMNGVNSSNGVVDPRASVLAQWQNSYSIKVVLQELRRLMMSKENMKLPQPP
EGQCYSN

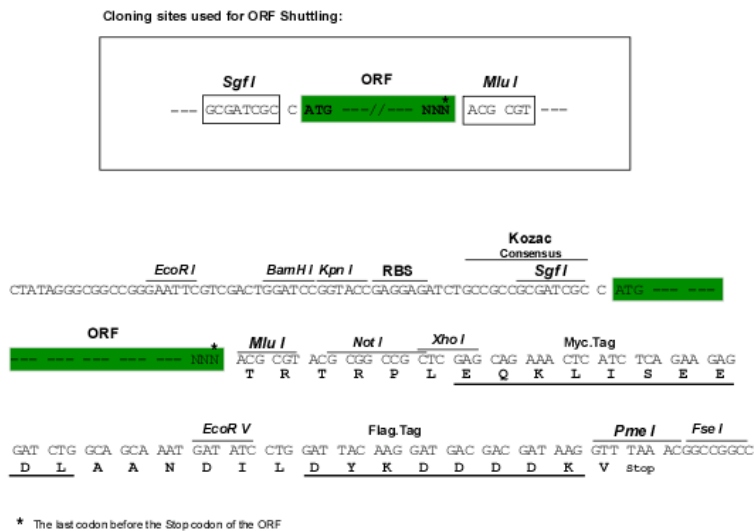
TRTRPLEQKLISEEDLAANDILDYKDDDDKV

Chromatograms: https://cdn.origene.com/chromatograms/mk6384_c05.zip



Restriction Sites: SgfI-MluI

Cloning Scheme:



ACCN: NM_001032288

ORF Size: 441 bp

OTI Disclaimer: The molecular sequence of this clone aligns with the gene accession number as a point of reference only. However, individual transcript sequences of the same gene can differ through naturally occurring variations (e.g. polymorphisms), each with its own valid existence. This clone is substantially in agreement with the reference, but a complete review of all prevailing variants is recommended prior to use. [More info](#)

OTI Annotation: This clone was engineered to express the complete ORF with an expression tag. Expression varies depending on the nature of the gene.

Components: The ORF clone is ion-exchange column purified and shipped in a 2D barcoded Matrix tube containing 10ug of transfection-ready, dried plasmid DNA (reconstitute with 100 ul of water).

Reconstitution Method:

1. Centrifuge at 5,000xg for 5min.
2. Carefully open the tube and add 100ul of sterile water to dissolve the DNA.
3. Close the tube and incubate for 10 minutes at room temperature.
4. Briefly vortex the tube and then do a quick spin (less than 5000xg) to concentrate the liquid at the bottom.
5. Store the suspended plasmid at -20°C. The DNA is stable for at least one year from date of shipping when stored at -20°C.

RefSeq: [NM_001032288.3](#)

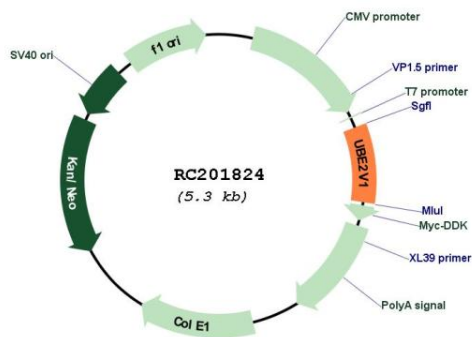
RefSeq Size: 2158 bp

RefSeq ORF: 444 bp

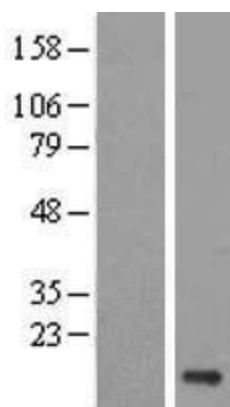
Locus ID: 7335

UniProt ID:	<u>Q13404</u>
Cytogenetics:	20q13.13
Protein Families:	Druggable Genome, Transcription Factors
MW:	16.5 kDa
Gene Summary:	Ubiquitin-conjugating E2 enzyme variant proteins constitute a distinct subfamily within the E2 protein family. They have sequence similarity to other ubiquitin-conjugating enzymes but lack the conserved cysteine residue that is critical for the catalytic activity of E2s. The protein encoded by this gene is located in the nucleus and can cause transcriptional activation of the human FOS proto-oncogene. It is thought to be involved in the control of differentiation by altering cell cycle behavior. Alternatively spliced transcript variants encoding multiple isoforms have been described for this gene, and multiple pseudogenes of this gene have been identified. Co-transcription of this gene and the neighboring upstream gene generates a rare transcript (Kua-UEV), which encodes a fusion protein comprised of sequence sharing identity with each individual gene product. [provided by RefSeq, Apr 2012]

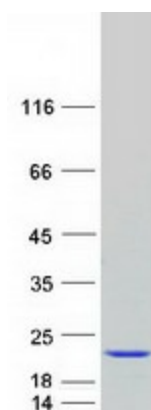
Product images:



Circular map for RC201824



Western blot validation of overexpression lysate (Cat# [LY422298]) using anti-DDK antibody (Cat# [TA50011-100]). Left: Cell lysates from untransfected HEK293T cells; Right: Cell lysates from HEK293T cells transfected with RC201824 using transfection reagent MegaTran 2.0 (Cat# [TT210002]).



Coomassie blue staining of purified UBE2V1 protein (Cat# [TP301824]). The protein was produced from HEK293T cells transfected with UBE2V1 cDNA clone (Cat# RC201824) using MegaTran 2.0 (Cat# [TT210002]).