

## Product datasheet for **RC201768**

### COX7C (NM\_001867) Human Tagged ORF Clone

#### Product data:

Product Type: Expression Plasmids  
Product Name: COX7C (NM\_001867) Human Tagged ORF Clone  
Tag: Myc-DDK  
Symbol: COX7C  
Mammalian Cell Selection: Neomycin  
Vector: pCMV6-Entry (PS100001)  
E. coli Selection: Kanamycin (25 ug/mL)  
ORF Nucleotide Sequence: >RC201768 ORF sequence  
Red=Cloning site Blue=ORF Green=Tags(s)

TTTTGTAATACGACTCACTATAGGGCGGCCGGAATTCGTCGACTGGATCCGGTACCGAGGAGATCTGCC  
GCC**CGATCGCC**

ATGTTGGGCCAGAGCATCCGGAGGTTCAACCTCTGTGGTCCGTAGGAGCCACTATGAGGAGGGCCCTG  
GGAAGAATTTGCCATTTTCAGTGGAAAACAAGTGGTCGTTACTAGCTAAGATGTGTTTGTACTTTGGATC  
TGCATTTGCTACACCCTTCCTTGTAGTAAGACACCAACTGCTTAAACA

**ACGCGT**ACGCGGCCGCTCGAGCAGAACTCATCTCAGAAGAGGATCTGGCAGCAAATGATATCCTGGATT  
ACAAGGATGACGACGATAAGGTTTAA

Protein Sequence: >RC201768 protein sequence  
Red=Cloning site Green=Tags(s)

MLGQSIRRFTTSVRRSHYEEGPKNLPSVENKWSLLAKMCLYFGSAFATPFLVVRHQLLKT

**TR**TRPLEQKLISEEDLAANDILDYKDDDDKV

Chromatograms: [https://cdn.origene.com/chromatograms/mk6376\\_f12.zip](https://cdn.origene.com/chromatograms/mk6376_f12.zip)

Restriction Sites: SgfI-MluI



[View online »](#)

**Cloning Scheme:**


**ACCN:** NM\_001867

**ORF Size:** 189 bp

**OTI Disclaimer:** The molecular sequence of this clone aligns with the gene accession number as a point of reference only. However, individual transcript sequences of the same gene can differ through naturally occurring variations (e.g. polymorphisms), each with its own valid existence. This clone is substantially in agreement with the reference, but a complete review of all prevailing variants is recommended prior to use. [More info](#)

**OTI Annotation:** This clone was engineered to express the complete ORF with an expression tag. Expression varies depending on the nature of the gene.

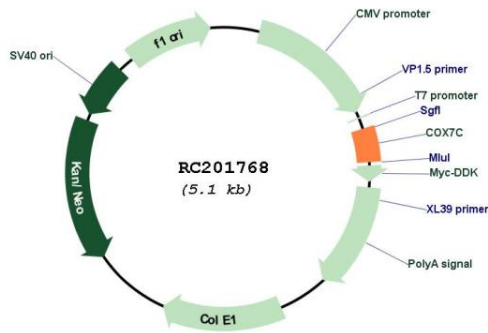
**Components:** The ORF clone is ion-exchange column purified and shipped in a 2D barcoded Matrix tube containing 10ug of transfection-ready, dried plasmid DNA (reconstitute with 100 ul of water).

- Reconstitution Method:**
1. Centrifuge at 5,000xg for 5min.
  2. Carefully open the tube and add 100ul of sterile water to dissolve the DNA.
  3. Close the tube and incubate for 10 minutes at room temperature.
  4. Briefly vortex the tube and then do a quick spin (less than 5000xg) to concentrate the liquid at the bottom.
  5. Store the suspended plasmid at -20°C. The DNA is stable for at least one year from date of shipping when stored at -20°C.

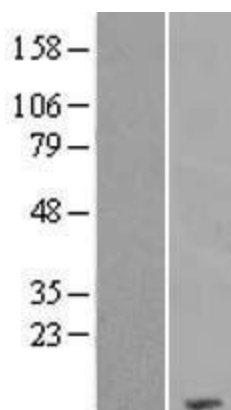
**RefSeq:** [NM\\_001867.3](#)

**RefSeq Size:** 448 bp

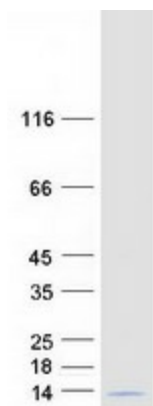
RefSeq ORF:	192 bp
Locus ID:	1350
UniProt ID:	<a href="#">P15954</a>
Cytogenetics:	5q14.3
Protein Pathways:	Alzheimer's disease, Cardiac muscle contraction, Huntington's disease, Metabolic pathways, Oxidative phosphorylation, Parkinson's disease
MW:	7.2 kDa
Gene Summary:	Cytochrome c oxidase (COX), the terminal component of the mitochondrial respiratory chain, catalyzes the electron transfer from reduced cytochrome c to oxygen. This component is a heteromeric complex consisting of 3 catalytic subunits encoded by mitochondrial genes and multiple structural subunits encoded by nuclear genes. The mitochondrially-encoded subunits function in electron transfer, and the nuclear-encoded subunits may function in the regulation and assembly of the complex. This nuclear gene encodes subunit VIIc, which shares 87% and 85% amino acid sequence identity with mouse and bovine COX VIIc, respectively, and is found in all tissues. A pseudogene COX7CP1 has been found on chromosome 13. [provided by RefSeq, Jul 2008]

**Product images:**


Circular map for RC201768



Western blot validation of overexpression lysate (Cat# [LY419695]) using anti-DDK antibody (Cat# [TA50011-100]). Left: Cell lysates from untransfected HEK293T cells; Right: Cell lysates from HEK293T cells transfected with RC201768 using transfection reagent MegaTran 2.0 (Cat# [TT210002]).



Coomassie blue staining of purified COX7C protein (Cat# [TP301768]). The protein was produced from HEK293T cells transfected with COX7C cDNA clone (Cat# RC201768) using MegaTran 2.0 (Cat# [TT210002]).