

Product datasheet for RC201654

CREG1 (NM_003851) Human Tagged ORF Clone

Product data:

Product Type:	Expression Plasmids
Product Name:	CREG1 (NM_003851) Human Tagged ORF Clone
Tag:	Myc-DDK
Symbol:	CREG1
Synonyms:	CREG
Mammalian Cell Selection:	Neomycin
Vector:	pCMV6-Entry (PS100001)
E. coli Selection:	Kanamycin (25 ug/mL)
ORF Nucleotide Sequence:	>RC201654 ORF sequence Red=Cloning site Blue=ORF Green=Tags(s)

TTTTGTAATACGACTCACTATAGGGCGGCCGGAATTCGTCGACTGGATCCGGTACCGAGGAGATCTGCC
GCC**CGATCGCC**

ATGGCCGGGCTATCCCGCGGGTCCGCGCGCGCACTGCTCGCCGCCCTGCTGGCGTCGACGCTGTTGGCGC
TGCTCGTGTGCCCCGCGCGGGTCCGCGCGGCCGGGACCACGGGACTGGGACGAGGCCTCCCGGCTGCC
GCCGCTACCACCCCGCGAGGACGCGCGCGCTGGCCCGCTTCGTGACGCACGTCTCCGACTGGGGCGCT
CTGGCCACCATCTCCACGCTGGAGGCGGTGCGCGGCCGCCCTTCGCCGACGTCTCTCGCTCAGCGACG
GGCCCCGGGCGCGGGCAGCGGCGTGCCCTATTTCTACCTGAGCCGCTGCAGCTCTCCGTGAGCAACT
GCAGGAGAATCCATATGCTACACTGACCATGACTTTGGCACAGACCAACTTCTGCAAGAAACATGGATT
GATCCACAAAGTCCCCTTTGTGTTACATAATGCTGTCAGGAACTGTGACCAAGGTGAATGAAACAGAAA
TGGATATTGCAAAGCATTGTTATTCATTTCGACACCCTGAGATGAAAACCTGGCCTTCCAGCCATAATTG
GTTCTTTGCTAAGTTGAATATAACCAATATCTGGGTCCTGGACTACTTTGGTGGACCAAAAATCGTGACA
CCAGAAGAATATTATAATGTCACAGTTCAG

ACGCGTACGCGGCCGCTCGAGCAGAACTCATCTCAGAAGAGGATCTGGCAGCAATGATATCCTGGATT
ACAAGGATGACGACGATAAGGTTTAA



[View online »](#)

Reconstitution Method:

1. Centrifuge at 5,000xg for 5min.
2. Carefully open the tube and add 100ul of sterile water to dissolve the DNA.
3. Close the tube and incubate for 10 minutes at room temperature.
4. Briefly vortex the tube and then do a quick spin (less than 5000xg) to concentrate the liquid at the bottom.
5. Store the suspended plasmid at -20°C. The DNA is stable for at least one year from date of shipping when stored at -20°C.

RefSeq: [NM_003851.3](#)

RefSeq Size: 2048 bp

RefSeq ORF: 663 bp

Locus ID: 8804

UniProt ID: [O75629](#)

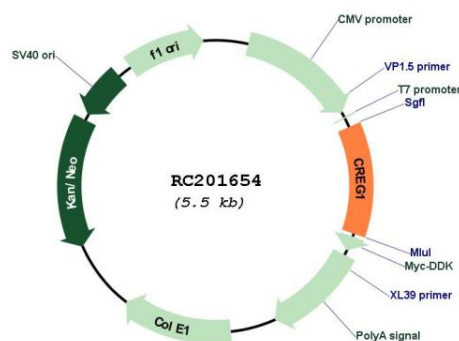
Cytogenetics: 1q24.2

Protein Families: Secreted Protein, Transcription Factors, Transmembrane

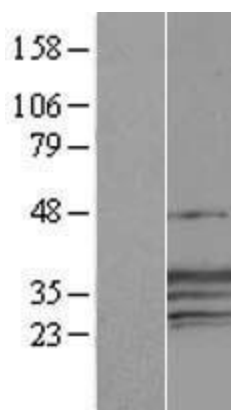
MW: 24.1 kDa

Gene Summary: The adenovirus E1A protein both activates and represses gene expression to promote cellular proliferation and inhibit differentiation. The protein encoded by this gene antagonizes transcriptional activation and cellular transformation by E1A. This protein shares limited sequence similarity with E1A and binds both the general transcription factor TBP and the tumor suppressor pRb in vitro. This gene may contribute to the transcriptional control of cell growth and differentiation. [provided by RefSeq, Jul 2008]

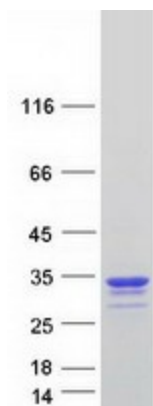
Product images:



Circular map for RC201654



Western blot validation of overexpression lysate (Cat# [LY418392]) using anti-DDK antibody (Cat# [TA50011-100]). Left: Cell lysates from untransfected HEK293T cells; Right: Cell lysates from HEK293T cells transfected with RC201654 using transfection reagent MegaTran 2.0 (Cat# [TT210002]).



Coomassie blue staining of purified CREG1 protein (Cat# [TP301654]). The protein was produced from HEK293T cells transfected with CREG1 cDNA clone (Cat# RC201654) using MegaTran 2.0 (Cat# [TT210002]).