

## Product datasheet for **RC201587**

### **ORC4L (ORC4) (NM\_002552) Human Tagged ORF Clone**

#### **Product data:**

Product Type:	Expression Plasmids
Product Name:	ORC4L (ORC4) (NM_002552) Human Tagged ORF Clone
Tag:	Myc-DDK
Symbol:	ORC4L
Synonyms:	ORC4L; ORC4P
Mammalian Cell Selection:	Neomycin
Vector:	pCMV6-Entry (PS100001)
E. coli Selection:	Kanamycin (25 ug/mL)



[View online »](#)

**ORF Nucleotide Sequence:**

>RC201587 ORF sequence  
 Red=Cloning site Blue=ORF Green=Tags(s)

TTTTGTAATACGACTCACTATAGGGCGGCCGGAATTCGTCGACTGGATCCGGTACCGAGGAGATCTGCC  
 GCC**CGGATCGCC**

ATGAGCAGTCGTAATCAAAGAGTAACAGCTTAATTCACACAGAGTGCCTTTACAGGTACAAGAATTT  
 TACGTGAAAGATTTTGTGTCGAGAGTCCACATAGTAACCTATTTGGAGTGCAAGTACAATACAAACTT  
 AAGTGAGCTGCTGAAAAGAACTGCTCTCCATGGAGAGAGTAACCTGTCTTATTATCGGACCCCGAGGA  
 TCAGGAAAAACTATGTTAATAAATCATGCTTTGAAAGAACTCATGGAAATAGAAGAAGTGAAGTGA  
 TATTACAAGTTCACTTAAATGGACTGCTGCAGATCAATGACAAAAATCGCCCTAAAGGAAATCACAAGGCA  
 GTTAAATCTGGAAAAATGTAGTTGGAGATAAAGTTTTTGGAAAGCTTTGCTGAAAACCTTTCATTTCTTCTG  
 GAAGCTTTAAAAAAGGTGACCGAACTAGCAGTTGCCAGTGATCTTCATATTAGATGAATTTGATCTTT  
 TTGCTCATATAAAAACCAACACTTCTCTATAATCTTTTGGACATTTCTCAGTCTGCACAGACCCCAAT  
 AGCAGTTATTGGTCTTACATGTAGATTGGATATTTTGGAACTCTTAGAAAAAGAGTGAAGTCAAGATTT  
 TCTCACCGGCAGATACACTTAATGAATTCATTTGGTTTTCCACAGTATGTTAAAAATTTAAAGAACAGT  
 TATCTCTACCTGCAGAGTTTCCAGACAAGTTTTTGGTGTGAGAAGTGAATGAAAAATGTTCAATCTCTC  
 AGAAGATAGAAGTGTGCAAGAAGTACTACAGAAGCATTTCATATCAGCAAAAACCTGCGGTCTTACAC  
 ATGCTATTGATGCTTGTCTTAAATCGAGTAACAGCATCGACCCATTTATGACTGCCGTAGATCTAATGG  
 AAGCAAGCAACTGTGTAGCATGGACTCGAAAGCAAATATTGTACATGGTCTATCAGTCTTGAAATCTG  
 TCTTATAATAGCAATGAAACATTTAAATGACATCTATGAGGAAGGCCATTTAATTTTCAAATGGTCTAT  
 AATGAGTTTCAGAAGTTTGTCAAAGGAAAGCACATTCGGTTTATAATTTGAAAAACCTGTTGTATGA  
 AGGCTTTTGAACACTTGCAGCAATTAGAATTAATAAAGCCCATGGAAAGAAGTTCAGGAAATTCACAGAG  
 AGAGTACCAGCTGATGAACTGCTTTTGGATAATACTCAAATTATGAATGCTCTGCAGAAATATCCCAAC  
 TGTCCTACAGATGTGAGGCAAGTGGCAACATCCTCACTAAGCTGGTTA

**ACGCGT**ACGCGGCCGCTCGAGCAGAAACTCATCTCAGAAGAGGATCTGGCAGCAATGATATCCTGGATT  
 ACAAGGATGACGACGATAAGGTTTAA

**Protein Sequence:**

>RC201587 protein sequence  
 Red=Cloning site Green=Tags(s)

MSSRKSNSLIHTECLSQVQRILRERFCRQSPHSNLFVGVQVQYKHLSELLKRTALHGESNSVLIIGPRG  
 SGKTMLINHALKELMEIEEVSENVLQVHLNGLLQINDKIALKEITRQLNLENVVGDVFGSFAENLSFLL  
 EALKKGDRTSSCPVIFILDEFDLFAHKNQTLNLFDISQSAQTPIAVIGLTCRLDILELLEKRVKSRF  
 SHRQIHLMNSFGFPQYVKIFKEQLSLPAEFPDKVFAEKWNENVQYLSEDRSVQEVQKHFNISKNLRLH  
 MLLMLALNRVTASHPFMTAVDLMEASQLCSMDSKANIVHGLSVLEICLIAMKHLNDIYEEEPFNFQMVY  
 NEFQKFVQRKAHSVYNFEKPVVMKA FEHLQLELIKPMERTSGNSQREYQLMKLLLDNTQIMNALQKYPN  
 CPTDVRQWATSSLSWL

**TR**TRPLEQKLISEEDLAANDILDYKDDDDKV

**Chromatograms:**

[https://cdn.origene.com/chromatograms/mk6323\\_g06.zip](https://cdn.origene.com/chromatograms/mk6323_g06.zip)

**Restriction Sites:**

Sgfl-Mlul

**Cloning Scheme:**


**ACCN:** NM\_002552

**ORF Size:** 1308 bp

**OTI Disclaimer:** The molecular sequence of this clone aligns with the gene accession number as a point of reference only. However, individual transcript sequences of the same gene can differ through naturally occurring variations (e.g. polymorphisms), each with its own valid existence. This clone is substantially in agreement with the reference, but a complete review of all prevailing variants is recommended prior to use. [More info](#)

**OTI Annotation:** This clone was engineered to express the complete ORF with an expression tag. Expression varies depending on the nature of the gene.

**Components:** The ORF clone is ion-exchange column purified and shipped in a 2D barcoded Matrix tube containing 10ug of transfection-ready, dried plasmid DNA (reconstitute with 100 ul of water).

**Reconstitution Method:**

1. Centrifuge at 5,000xg for 5min.
2. Carefully open the tube and add 100ul of sterile water to dissolve the DNA.
3. Close the tube and incubate for 10 minutes at room temperature.
4. Briefly vortex the tube and then do a quick spin (less than 5000xg) to concentrate the liquid at the bottom.
5. Store the suspended plasmid at -20°C. The DNA is stable for at least one year from date of shipping when stored at -20°C.

**RefSeq:** [NM\\_002552.5](#)

**RefSeq Size:** 6594 bp

**RefSeq ORF:** 1311 bp

**Locus ID:** 5000

**UniProt ID:** [O43929](#)

**Cytogenetics:** 2q23.1

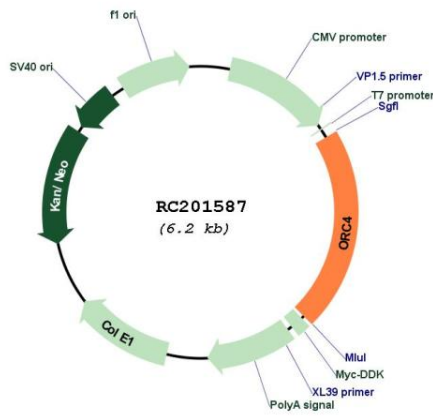
**Domains:** AAA

**Protein Pathways:** Cell cycle

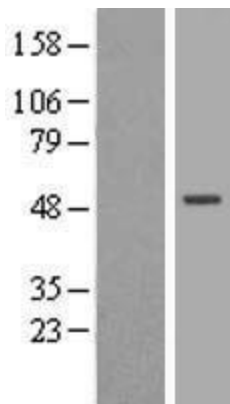
**MW:** 50.4 kDa

**Gene Summary:** The origin recognition complex (ORC) is a highly conserved six subunit protein complex essential for the initiation of the DNA replication in eukaryotic cells. Studies in yeast demonstrated that ORC binds specifically to origins of replication and serves as a platform for the assembly of additional initiation factors such as Cdc6 and Mcm proteins. This gene encodes a subunit of the ORC complex. Several alternatively spliced transcript variants, some of which encode the same protein, have been reported for this gene. [provided by RefSeq, Oct 2010]

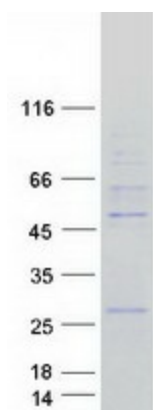
**Product images:**



Circular map for RC201587



Western blot validation of overexpression lysate (Cat# [LY405645]) using anti-DDK antibody (Cat# [TA50011-100]). Left: Cell lysates from untransfected HEK293T cells; Right: Cell lysates from HEK293T cells transfected with [RC211723] using transfection reagent MegaTran 2.0 (Cat# [TT210002]).



Coomassie blue staining of purified ORC4 protein (Cat# [TP301587]). The protein was produced from HEK293T cells transfected with ORC4 cDNA clone (Cat# RC201587) using MegaTran 2.0 (Cat# [TT210002]).