

## Product datasheet for RC201527

### AP4S1 (NM\_007077) Human Tagged ORF Clone

#### Product data:

**Product Type:** Expression Plasmids  
**Product Name:** AP4S1 (NM\_007077) Human Tagged ORF Clone  
**Tag:** Myc-DDK  
**Symbol:** AP4S1  
**Synonyms:** AP47B; CLA20; CLAPS4; CPSQ6; SPG52  
**Mammalian Cell Selection:** Neomycin  
**Vector:** pCMV6-Entry (PS100001)  
**E. coli Selection:** Kanamycin (25 ug/mL)  
**ORF Nucleotide Sequence:** >RC201527 ORF sequence  
Red=Cloning site Blue=ORF Green=Tags(s)

TTTTGTAATACGACTCACTATAGGGCGCCGGGAATTCGTCGACTGGATCCGGTACCGAGGAGATCTGCC  
GCC**CGATCGCC**

ATGATAAAATTTTCTCATGGTGAATAAACAAGGGCAGACTCGACTTTCTAAGTACTATGAACATGTGG  
ATATTAATAAGCGTACACTTCTGGAAACAGAAGTCATAAAGAGCTGTCTCTCGATCCAATGAACAATG  
CTCTTTCATTGAATATAAGGATTTAAGCTGATATATCGGCAGTATGCAGCTCTCTTCATTGTGGTTGGA  
GTTAATGACACTGAGAACGAGATGGCTATTTATGAATTCATTCATAACTTTGTGGAAGTTTTAGATGAGT  
ATTTCCAGCCGAGTGAGTGAATTAGATGTATCCTTTTTCAATACTGTTTTCCACAGTACTTGCAAATGCA  
CTCTGGTCCTTATCAGGAACCAATTGATGAACTCCCAAATATGCTCAGCCCTGGAGCCCCAGCAGACT  
TGCTTTTCTCCAGACAGTTCATCATTCAAAGGAGCTGCCTCCACCACCCCATCTAC

**ACGCGT**ACGCGGCCGCTCGAGCAGAACTCATCTCAGAAGAGGATCTGGCAGCAAATGATATCCTGGATT  
ACAAGGATGACGACGATAAGGTTTAA

**Protein Sequence:** >RC201527 protein sequence  
Red=Cloning site Green=Tags(s)  
MIKFFLMVKNKQGQTRLKYYEHVDINKRTLLETEVIKSLSRSNEQCSFIEYKDFKLIYRQYAALFIVVG  
VNDTENEMAIYEFIHNFEVLDEYFSRVSELDVSFFNTVFHSTWQMHSQPYQEPIDELPKICSALEPQQT  
CFSPDSSSFKGAASTPIY

**TRTRPLEQKLI**SEEDLAANDILDYKDDDDKV

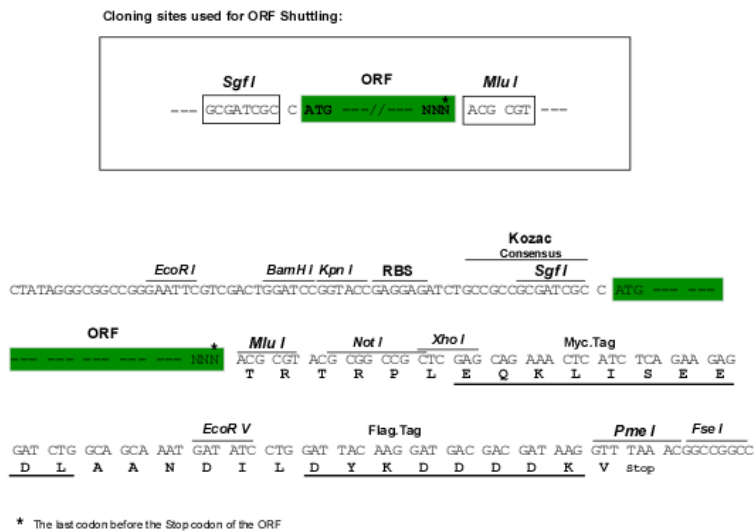
**Chromatograms:** [https://cdn.origene.com/chromatograms/mk6300\\_e12.zip](https://cdn.origene.com/chromatograms/mk6300_e12.zip)



[View online »](#)

Restriction Sites: SgfI-MluI

Cloning Scheme:



ACCN: NM\_007077

ORF Size: 477 bp

OTI Disclaimer: The molecular sequence of this clone aligns with the gene accession number as a point of reference only. However, individual transcript sequences of the same gene can differ through naturally occurring variations (e.g. polymorphisms), each with its own valid existence. This clone is substantially in agreement with the reference, but a complete review of all prevailing variants is recommended prior to use. [More info](#)

OTI Annotation: This clone was engineered to express the complete ORF with an expression tag. Expression varies depending on the nature of the gene.

Components: The ORF clone is ion-exchange column purified and shipped in a 2D barcoded Matrix tube containing 10ug of transfection-ready, dried plasmid DNA (reconstitute with 100 ul of water).

Reconstitution Method:

1. Centrifuge at 5,000xg for 5min.
2. Carefully open the tube and add 100ul of sterile water to dissolve the DNA.
3. Close the tube and incubate for 10 minutes at room temperature.
4. Briefly vortex the tube and then do a quick spin (less than 5000xg) to concentrate the liquid at the bottom.
5. Store the suspended plasmid at -20°C. The DNA is stable for at least one year from date of shipping when stored at -20°C.

RefSeq: [NM\\_007077.4](#)

RefSeq Size: 1804 bp

RefSeq ORF: 480 bp

Locus ID: 11154

UniProt ID: [Q9Y587](#)

Cytogenetics: 14q12

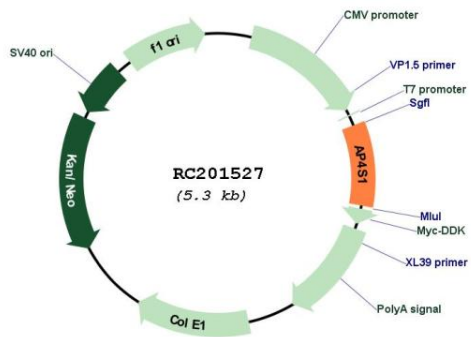
Domains: Clat\_adaptor\_s

Protein Pathways: Lysosome

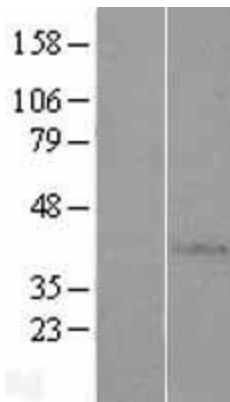
MW: 18.6 kDa

**Gene Summary:** This gene encodes a member of the adaptor complexes small subunit protein family. These proteins are components of the heterotetrameric adaptor protein complexes, which play important roles in the secretory and endocytic pathways by mediating vesicle formation and sorting of integral membrane proteins. The encoded protein is the small subunit of adaptor protein complex-4, which is associated with both clathrin- and nonclathrin-coated vesicles. Mutations in this gene are associated with spastic quadriplegic cerebral palsy-6. Alternatively spliced transcript variants encoding multiple isoforms have been observed for this gene, and a pseudogene of this gene is located on the long arm of chromosome 6. [provided by RefSeq, Dec 2011]

**Product images:**



Circular map for RC201527



Western blot validation of overexpression lysate (Cat# [LY416214]) using anti-DDK antibody (Cat# [TA50011-100]). Left: Cell lysates from untransfected HEK293T cells; Right: Cell lysates from HEK293T cells transfected with RC201527 using transfection reagent MegaTran 2.0 (Cat# [TT210002]).