

Product datasheet for **RC201464**

RAB10 (NM_016131) Human Tagged ORF Clone

Product data:

Product Type: Expression Plasmids
Product Name: RAB10 (NM_016131) Human Tagged ORF Clone
Tag: Myc-DDK
Symbol: RAB10
Mammalian Cell Selection: Neomycin
Vector: pCMV6-Entry (PS100001)
E. coli Selection: Kanamycin (25 ug/mL)
ORF Nucleotide Sequence: >RC201464 ORF sequence
Red=Cloning site Blue=ORF Green=Tags(s)

TTTTGTAATACGACTCACTATAGGGCGGCCGGAATTCGTCGACTGGATCCGGTACCGAGGAGATCTGCC
GCC**CGCATCGCC**

ATGGCGAAGAAGACGTACGACCTGCTTTTCAAGCTGCTCCTGATCGGGGATTCGGAGTGGGGAAGACCT
GCGTCCTTTTTTCGTTTTTCGGATGATGCCTTCAATACTACCTTTATTTCCACCATAGGAATAGACTTCAA
GATCAAAACAGTTGAATTACAAGGAAAGAAGATCAAGCTACAGATATGGGATACAGCAGGCCAGGAGCGA
TTTCACACCATCACAACCTCCTACTACAGAGCGCAATGGGTATCATGCTAGTATATGACATCACCAATG
GTAAAAGTTTTGAAAACATCAGCAAATGGCTTAGAAAACATAGATGAGCATGCCAATGAAGATGTGGAAAG
AATGTTACTAGGAAACAAGTGTGATATGGACGACAAAAGAGTTGTACCTAAAGGAAAAGGAGAACAGATT
GCAAGGGAGCATGGTATTAGTTTTTTGAGACTAGTGCAAAAGCAAATATAAACATCGAAAAGCGTTCC
TCACGTTAGCTGAAGATATCCTTCGAAAGACCCCTGTAAAAGAGCCCAACAGTAAAAATGTAGATATCAG
CAGTGGAGGAGCGTGACAGGCTGGAAGAGCAAATGCTGC

ACGCGTACGCGGCCGCTCGAGCAGAAACTCATCTCAGAAGAGGATCTGGCAGCAAATGATATCCTGGATT
ACAAGGATGACGACGATAAGGTTTAA

Protein Sequence: >RC201464 protein sequence
Red=Cloning site Green=Tags(s)

MAKPTYDLLFKLLLIGDSGVGKTCVLFRRSDDAFNTTFISTIGIDFKIKTVELQGKKIKLQIWDTAGQER
FHTITTSYYRGAMGIMLVYDITNGKSFENISKWLRNIDEHANEDVERMLLGNKCDMDDKRVVPGKGEQI
AREHGIRFFETSAKANINIEKAFLTLAEDILRKTVPKPNSENVDISSGGVTVGWSKCC

TRTRPLEQKLISEEDLAANDILDYKDDDDKV

Chromatograms: https://cdn.origene.com/chromatograms/mk6301_h07.zip



[View online »](#)

Restriction Sites: SgfI-MluI

Cloning Scheme:



ACCN: NM_016131

ORF Size: 600 bp

OTI Disclaimer: Due to the inherent nature of this plasmid, standard methods to replicate additional amounts of DNA in E. coli are highly likely to result in mutations and/or rearrangements. Therefore, OriGene does not guarantee the capability to replicate this plasmid DNA. Additional amounts of DNA can be purchased from OriGene with batch-specific, full-sequence verification at a reduced cost. Please contact our customer care team at custsupport@origene.com or by calling 301.340.3188 option 3 for pricing and delivery.

The molecular sequence of this clone aligns with the gene accession number as a point of reference only. However, individual transcript sequences of the same gene can differ through naturally occurring variations (e.g. polymorphisms), each with its own valid existence. This clone is substantially in agreement with the reference, but a complete review of all prevailing variants is recommended prior to use. [More info](#)

OTI Annotation: This clone was engineered to express the complete ORF with an expression tag. Expression varies depending on the nature of the gene.

Components: The ORF clone is ion-exchange column purified and shipped in a 2D barcoded Matrix tube containing 10ug of transfection-ready, dried plasmid DNA (reconstitute with 100 ul of water).

Reconstitution Method:

1. Centrifuge at 5,000xg for 5min.
2. Carefully open the tube and add 100ul of sterile water to dissolve the DNA.
3. Close the tube and incubate for 10 minutes at room temperature.
4. Briefly vortex the tube and then do a quick spin (less than 5000xg) to concentrate the liquid at the bottom.
5. Store the suspended plasmid at -20°C. The DNA is stable for at least one year from date of shipping when stored at -20°C.

RefSeq: [NM_016131.5](#)

RefSeq Size: 3785 bp

RefSeq ORF: 603 bp

Locus ID: 10890

UniProt ID: [P61026](#)

Cytogenetics: 2p23.3

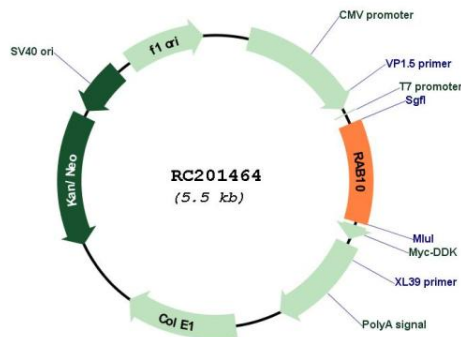
Domains: ras, RAN, RAS, RHO, RAB

Protein Families: Druggable Genome

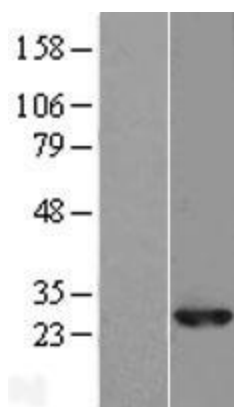
MW: 22.5 kDa

Gene Summary: RAB10 belongs to the RAS (see HRAS; MIM 190020) superfamily of small GTPases. RAB proteins localize to exocytic and endocytic compartments and regulate intracellular vesicle trafficking (Bao et al., 1998 [PubMed 9918381]).[supplied by OMIM, Mar 2009]

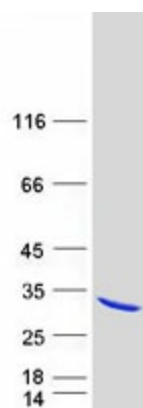
Product images:



Circular map for RC201464



Western blot validation of overexpression lysate (Cat# [LY414160]) using anti-DDK antibody (Cat# [TA50011-100]). Left: Cell lysates from untransfected HEK293T cells; Right: Cell lysates from HEK293T cells transfected with RC201464 using transfection reagent MegaTran 2.0 (Cat# [TT210002]).



Coomassie blue staining of purified RAB10 protein (Cat# [TP301464]). The protein was produced from HEK293T cells transfected with RAB10 cDNA clone (Cat# RC201464) using MegaTran 2.0 (Cat# [TT210002]).