

## Product datasheet for RC201316

### C20orf4 (AAR2) (NM\_015511) Human Tagged ORF Clone

#### Product data:

Product Type:	Expression Plasmids
Product Name:	C20orf4 (AAR2) (NM_015511) Human Tagged ORF Clone
Tag:	Myc-DDK
Symbol:	C20orf4
Synonyms:	C20orf4; CGI-23
Mammalian Cell Selection:	Neomycin
Vector:	pCMV6-Entry (PS100001)
E. coli Selection:	Kanamycin (25 ug/mL)
ORF Nucleotide Sequence:	>RC201316 ORF sequence Red=Cloning site Blue=ORF Green=Tags(s)

TTTTGTAATACGACTCACTATAGGGCGGCCGGAATTCGTCGACTGGATCCGGTACCGAGGAGATCTGCC  
GCC**CGATCGCC**

ATGGCTGCCGTGCAGATGGATCCTGAGCTAGCCAAGCGCCTCTTCTTTGAAGGGGCCACTGTGGTCATCC  
TGAACATGCCCAAGGGAACAGAGTTTGGGATTGACTATAACTCCTGGGAGGTCGGGCCAAGTCCGGGG  
CGTGAAGATGATCCCTCCAGGCATCCACTTCTCCACTACAGCTCTGTGGACAAGGCTAATCCGAAGGAA  
GTAGGCCCTCGTATGGGTTTCTCCTTAGCCTGCACCAGCGGGGCTGACAGTGTGCGCTGGAGCACAC  
TCAGGGAAGAGGTAGACCTGTCCCAGCCCAGAGTCTGAGGTGGAGGCCATGAGGGCCAACCTCCAGGA  
GCTGGACCAGTTCCTGGGGCCTTACCCATATGCCACCCTGAAGAAGTGGATCTCACTACCAACTTCATC  
AGCGAAGCCACAGTGGAGAAGCTACAGCCCAGAAATCGACAGATCTGTGCCTTTCCGATGTGCTACCTG  
TGCTCTCCATGAAGCACACCAAGGACCGCTGGGGCAGAATCTACCCCGCTGTGGCATTGAGTGCAAAAAG  
CTACCAAGAGGGCCTGGCCCGGCTACCAGAGATGAAGCCCAGAGCCGGGACAGAGATCCGCTTCTCAGAG  
CTGCCCACGCAGATGTTCCAGAGGGTGCCACGCCAGCTGAGATAACCAAGCACAGCATGGACCTGAGCT  
ATGCCCTGGAGACTGTGCTCAACAAGCAGTTCACAGCAGCCCCAGGATGTGCTTGGTGAACCTCCAGTT  
TGCTTTTGTGTGCTTCTGTGGGAATGTGTACGAGGCATTTGAGCATTGGAAGCGGCTCCTGAACCTC  
CTGTGCCGCTCAGAAGCAGCCATGATGAAGCACACACCCTCTACATCAACCTCATCTCCATCCTGTACC  
ACCAGCTTGGTGAGATCCCGCTGACTTCTCGTAGACATTGTCTCCAAGACAACCTCCTCACCAGCAC  
CTTACAGTTTTTCTTTCTCTGCTGCAGCATTGCCGTGGATGCCACCCTGAGAAAGAAAGCTGAAAAG  
TTCCAAGCTCACCTGACCAAGAAGTTCGGTGGGACTTTGCTGCGGAACCTGAGGACTGTGCCCCGGTGG  
TGGTGGAGCTCCCTGAGGGCATCGAGATGGGC

**ACGCGT**ACGCGGCCGCTCGAGCAGAAACTCATCTCAGAAGAGGATCTGGCAGCAATGATATCCTGGATT  
ACAAGGATGACGACGATAAGGTTTAA



[View online >](#)

**Protein Sequence:** >RC201316 protein sequence  
Red=Cloning site Green=Tags(s)

MAAVQMDPELAKRLFFEGATVVILNMPKGFTEFGIDYNSWEVGPVKFRGVMIPPGIHFHLYSSVDKANPKE  
 VGPRMGFFLSLHQRGLTVLRWSTLREEVDLSPAPESEVEAMRANLQELDQFLGPYPYATLKKWISL TNFI  
 SEATVEKLPENRQICAFSDVLPVLSMKHTKDRVGQNLPRCGIECKSYQEGLARLPEMKPRAGTEIRFSE  
 LPTQMFPPEGATPAEITKHSMDLSYALETVLNKQFPSSPQDVLGELQFAFVCFLLGNVYEAFEHWKRLNL  
 LCRSEAAAMKHTLYINLISILYHQLGEIPADFFVDIVSQDNFLTSTLQVFFSSACSIADVATLRKKAEK  
 FQAHLTKKFRWDFAAEPEDCAPVVVELPEGIEMG

TRTRPLEQKLISEEDLAANDILDYKDDDDKV

**Chromatograms:** [https://cdn.origene.com/chromatograms/mk6576\\_b02.zip](https://cdn.origene.com/chromatograms/mk6576_b02.zip)

**Restriction Sites:** SgfI-MluI

**Cloning Scheme:**



\* The last codon before the Stop codon of the ORF

**ACCN:** NM\_015511

**ORF Size:** 1152 bp

**OTI Disclaimer:** The molecular sequence of this clone aligns with the gene accession number as a point of reference only. However, individual transcript sequences of the same gene can differ through naturally occurring variations (e.g. polymorphisms), each with its own valid existence. This clone is substantially in agreement with the reference, but a complete review of all prevailing variants is recommended prior to use. [More info](#)

**OTI Annotation:** This clone was engineered to express the complete ORF with an expression tag. Expression varies depending on the nature of the gene.

**Components:** The ORF clone is ion-exchange column purified and shipped in a 2D barcoded Matrix tube containing 10ug of transfection-ready, dried plasmid DNA (reconstitute with 100 ul of water).

**Reconstitution Method:**

1. Centrifuge at 5,000xg for 5min.
2. Carefully open the tube and add 100ul of sterile water to dissolve the DNA.
3. Close the tube and incubate for 10 minutes at room temperature.
4. Briefly vortex the tube and then do a quick spin (less than 5000xg) to concentrate the liquid at the bottom.
5. Store the suspended plasmid at -20°C. The DNA is stable for at least one year from date of shipping when stored at -20°C.

**RefSeq:** [NM\\_015511.4](#)

**RefSeq Size:** 2765 bp

**RefSeq ORF:** 1155 bp

**Locus ID:** 25980

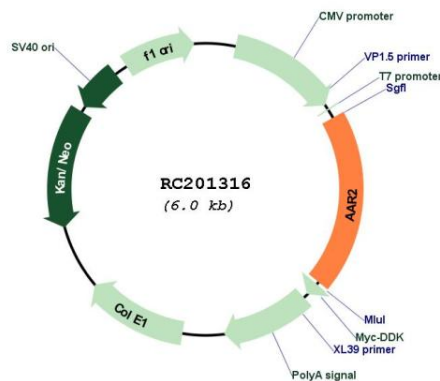
**UniProt ID:** [Q9Y312](#)

**Cytogenetics:** 20q11.23

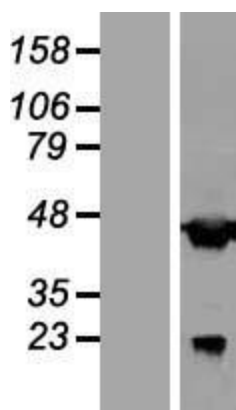
**MW:** 43.5 kDa

**Gene Summary:** This gene encodes the homolog of the yeast A1-alpha2 repressin protein that is involved in mRNA splicing. Alternately spliced transcript variants have been found for this gene. [provided by RefSeq, Dec 2012]

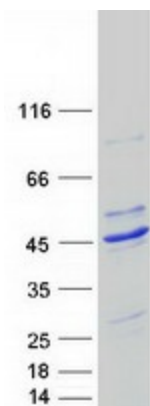
## Product images:



Circular map for RC201316



Western blot validation of overexpression lysate (Cat# [LY414504]) using anti-DDK antibody (Cat# [TA50011-100]). Left: Cell lysates from untransfected HEK293T cells; Right: Cell lysates from HEK293T cells transfected with RC201316 using transfection reagent MegaTran 2.0 (Cat# [TT210002]).



Coomassie blue staining of purified AAR2 protein (Cat# [TP301316]). The protein was produced from HEK293T cells transfected with AAR2 cDNA clone (Cat# RC201316) using MegaTran 2.0 (Cat# [TT210002]).