

Product datasheet for RC201288L1

UBA2 (NM_005499) Human Tagged Lenti ORF Clone

Product data:

Product Type:	Expression Plasmids
Product Name:	UBA2 (NM_005499) Human Tagged Lenti ORF Clone
Tag:	Myc-DDK
Symbol:	UBA2
Synonyms:	ARX; HRIHFB2115; SAE2
Mammalian Cell Selection:	None
Vector:	pLenti-C-Myc-DDK (PS100064)
E. coli Selection:	Chloramphenicol (34 ug/mL)
ORF Nucleotide Sequence:	The ORF insert of this clone is exactly the same as(RC201288).
Restriction Sites:	SgfI-MluI
Cloning Scheme:	

Cloning sites used for ORF Shuttling:



* The last codon before the Stop codon of the ORF.

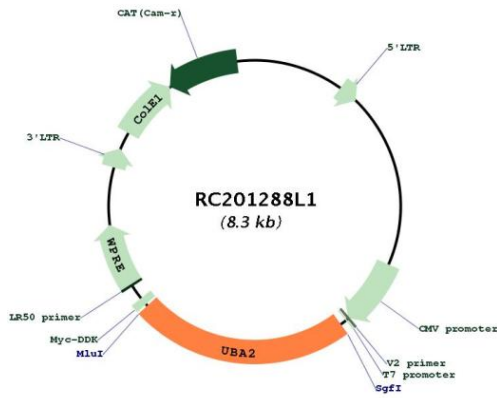
ACCN:	NM_005499
ORF Size:	1920 bp



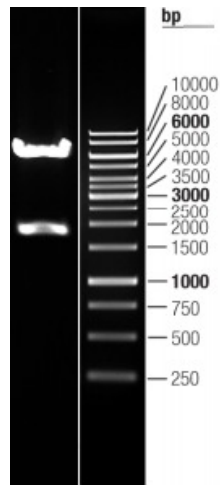
[View online »](#)

OTI Disclaimer:	The molecular sequence of this clone aligns with the gene accession number as a point of reference only. However, individual transcript sequences of the same gene can differ through naturally occurring variations (e.g. polymorphisms), each with its own valid existence. This clone is substantially in agreement with the reference, but a complete review of all prevailing variants is recommended prior to use. More info
OTI Annotation:	This clone was engineered to express the complete ORF with an expression tag. Expression varies depending on the nature of the gene.
Components:	The ORF clone is ion-exchange column purified and shipped in a 2D barcoded Matrix tube containing 10ug of transfection-ready, dried plasmid DNA (reconstitute with 100 ul of water).
Reconstitution Method:	<ol style="list-style-type: none">1. Centrifuge at 5,000xg for 5min.2. Carefully open the tube and add 100ul of sterile water to dissolve the DNA.3. Close the tube and incubate for 10 minutes at room temperature.4. Briefly vortex the tube and then do a quick spin (less than 5000xg) to concentrate the liquid at the bottom.5. Store the suspended plasmid at -20°C. The DNA is stable for at least one year from date of shipping when stored at -20°C.
RefSeq:	NM_005499.2
RefSeq Size:	2682 bp
RefSeq ORF:	1923 bp
Locus ID:	10054
UniProt ID:	Q9UBT2
Cytogenetics:	19q13.11
Domains:	UBACT, ThiF
Protein Pathways:	Ubiquitin mediated proteolysis
MW:	71 kDa
Gene Summary:	Posttranslational modification of proteins by the addition of the small protein SUMO (see SUMO1; MIM 601912), or sumoylation, regulates protein structure and intracellular localization. SAE1 (MIM 613294) and UBA2 form a heterodimer that functions as a SUMO-activating enzyme for the sumoylation of proteins (Okuma et al., 1999 [PubMed 9920803]). [supplied by OMIM, Mar 2010]

Product images:



Circular map for RC201288L1



Double digestion of RC201288L1 using SgfI and MluI