

Product datasheet for **RC201226**

Annexin VII (ANXA7) (NM_001156) Human Tagged ORF Clone

Product data:

Product Type:	Expression Plasmids
Product Name:	Annexin VII (ANXA7) (NM_001156) Human Tagged ORF Clone
Tag:	Myc-DDK
Symbol:	Annexin VII
Synonyms:	ANX7; SNX; SYNEXIN
Mammalian Cell Selection:	Neomycin
Vector:	pCMV6-Entry (PS100001)
E. coli Selection:	Kanamycin (25 ug/mL)



[View online »](#)

ORF Nucleotide Sequence:

>RC201226 ORF sequence
 Red=Cloning site Blue=ORF Green=Tags(s)

TTTTGTAATACGACTCACTATAGGGCGGCCGGAATTCGTCGACTGGATCCGGTACCGAGGAGATCTGCC
 GCC**CGGATCGCC**

ATGTCATACCCAGGCTATCCCCAACAGGCTACCCACCTTCCCTGGATATCCTCCTGCAGGTCAGGAGT
 CATCTTTTCCCCCTTCTGGTCAGTATCCTTATCCTAGTGGCTTTCCTCCAATGGGAGGAGGTGCCTACCC
 ACAAGTGCCAAGTAGTGGCTACCCAGGAGCTGGAGGCTACCCTGCGCCTGGAGGTTATCCAGCCCCGGA
 GGCTATCCTGGTGCCCCACAGCCAGGGGAGCTCCATCCTATCCCGGAGTTCCTCCAGGCCAAGGATTTG
 GAGTCCCACCAGGTGGAGCAGGCTTTTCTGGGTATCCACAGCCACCTTCACAGTCTTATGGAGGTGGTCC
 AGCACAGGTTCCACTACCTGGTGGCTTTCCTGGAGGACAGATGCCTTCTCAGTATCCTGGAGGACAACT
 ACTTACCCTAGTCAGCCTGCCACAGTACTCAGGTCACCAAGGAATATCCGACCAGCTGCCAACTTCG
 ATGCTATAAGAGATGCAGAAATCTTCGTAAGGCAATGAAGGGTTTTGGGACAGATGAGCAGGCAATTGT
 GGATGTGGTGGCCAACCGTTCCAATGATCAGAGGCAAAAAATTAAGCAGCATTTAAGACCTCCTATGGC
 AAGGATTTAATCAAAGATCTCAAATCAGAGTAAAGTGGAAATATGGAAGAACTGATCCTGGCCCTCTTCA
 TGCCCTCTACGTATTACGATGCCTGGAGCTTACGGAAGCAATGCAGGGAGCAGGAATCAGGAACGTGT
 ATTGATTGAGATTTGTGCACAAGAACAATCAGGAAATCCGAGAAATTTGAGATGTTATCAGTCAGAA
 TTTGGACGAGACCTTGAAAGGACATTAGGTGAGATACATCAGGACATTTGAACGTTTACTTGTGTCCA
 TGTGCCAGGAAATCGTGATGAGAACAGAGTATAAACCAACCAATGGCTCAGGAAGATGCTCAGCGTCT
 CTATCAAGCTGGTGGGGGAGACTAGGGACCGATGAATCTTGCTTTAACATGATCCTTCCACAAGAAGC
 TTTCTCAGCTGAGAGCTACCATGGAGGCTTATCTAGGATGGCTAATCGAGACTTGTTAAGCAGTGTGA
 CGCGTGAGTTTTCCGGATATGTAGAAAGTGGTTGAAGACCATCTGCAGTGTGCCCTGAACCCGCTGC
 CTTCTTTGCTGAGAGGCTCTACTATGCTATGAAAGGTGCTGGCACAGATGACTCCACCCTGGTCCGGATT
 GTGGTCACTCGAAGTGAGATTGACCTTGTACAAATAAAACAGATGTTTCGCTCAGATGTATCAGAAGACT
 TGGGCACAATGATTGCAGGTGACACGAGTGGAGATTACCGAAGACTTCTTCTGGCTATTGTGGCCAG

ACGCGTACGCGGCCGCTCGAGCAGAACTCATCTCAGAAGAGGATCTGGCAGCAAATGATATCCTGGATT
 ACAAGGATGACGACGATAAGGTTTAA

Protein Sequence:

>RC201226 protein sequence
 Red=Cloning site Green=Tags(s)

MSYPGYPPTGYPPFPGYPPAGQESSFPPSGQYPYPSGFPMPGGGAYPQVPSSGYPGAGGYPAPGGYPAPG
 GYPGAPQPGGAPSYPGVPPGQGFVPPGGAGFSGYPQPPSQSYGGGPAQVPLPGGFPGGQMPQSYPGGQP
 TYPSPATVTQVTQGTIRPAANFDAIRDAEILRKAMKGFTEQAIVDVAVANRSNDQRQKIKAAFKTSYG
 KDLIKDLKSELSGNMEELILALFMPPTYDDAWSLRKAMQAGTQERVLIEILCTRTRNQEIREIVRCYQSE
 FGRDLEKDIRSDTSGHFERLLVSMCQGNRDNQSIHQMAQEDAQRLYQAGEGRLGTDESCFNMILATRS
 FPQLRATMEAYSRLMANRDLLSSVSREFSGYVESGLKTIHQALNRPAFFAERLYAMKAGTDDSTLVRI
 VVTRSEIDLVIKQMFQMYQKTLGTMIAGDTSGDYRRLLLAIVGQ

TRTRPLEQKLISEEDLAANDILDYKDDDDKV

Chromatograms:

https://cdn.origene.com/chromatograms/mk6084_e01.zip

Restriction Sites:

Sgfl-MluI

Cloning Scheme:


ACCN: NM_001156

ORF Size: 1398 bp

OTI Disclaimer: The molecular sequence of this clone aligns with the gene accession number as a point of reference only. However, individual transcript sequences of the same gene can differ through naturally occurring variations (e.g. polymorphisms), each with its own valid existence. This clone is substantially in agreement with the reference, but a complete review of all prevailing variants is recommended prior to use. [More info](#)

OTI Annotation: This clone was engineered to express the complete ORF with an expression tag. Expression varies depending on the nature of the gene.

Components: The ORF clone is ion-exchange column purified and shipped in a 2D barcoded Matrix tube containing 10ug of transfection-ready, dried plasmid DNA (reconstitute with 100 ul of water).

- Reconstitution Method:**
1. Centrifuge at 5,000xg for 5min.
 2. Carefully open the tube and add 100ul of sterile water to dissolve the DNA.
 3. Close the tube and incubate for 10 minutes at room temperature.
 4. Briefly vortex the tube and then do a quick spin (less than 5000xg) to concentrate the liquid at the bottom.
 5. Store the suspended plasmid at -20°C. The DNA is stable for at least one year from date of shipping when stored at -20°C.

RefSeq: [NM_001156.5](#)

RefSeq Size: 2146 bp

RefSeq ORF: 1401 bp

Locus ID: 310

UniProt ID: [P20073](#)

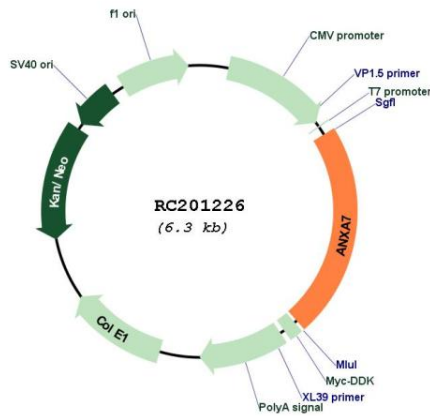
Cytogenetics: 10q22.2

Domains: annexin

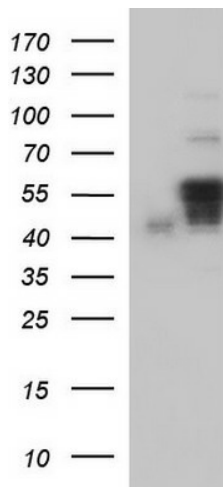
MW: 50.3 kDa

Gene Summary: Annexin VII is a member of the annexin family of calcium-dependent phospholipid binding proteins. The Annexin VII gene contains 14 exons and spans approximately 34 kb of DNA. An alternatively spliced cassette exon results in two mRNA transcripts of 2.0 and 2.4 kb which are predicted to generate two protein isoforms differing in their N-terminal domain. The alternative splicing event is tissue specific and the mRNA containing the cassette exon is prevalent in brain, heart and skeletal muscle. The transcripts also differ in their 3'-non coding regions by the use of two alternative poly(A) signals. Annexin VII encodes a protein with a molecular weight of approximately 51 kDa with a unique, highly hydrophobic N-terminal domain of 167 amino acids and a conserved C-terminal region of 299 amino acids. The latter domain is composed of alternating hydrophobic and hydrophilic segments. Structural analysis of the protein suggests that Annexin VII is a membrane binding protein with diverse properties, including voltage-sensitive calcium channel activity, ion selectivity and membrane fusion. [provided by RefSeq, Jul 2008]

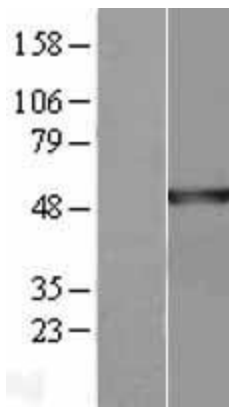
Product images:



Circular map for RC201226



HEK293T cells were transfected with the pCMV6-ENTRY control (Cat# [PS100001], Left lane) or pCMV6-ENTRY ANXA7 (Cat# RC201226, Right lane) cDNA for 48 hrs and lysed. Equivalent amounts of cell lysates (5 ug per lane) were separated by SDS-PAGE and immunoblotted with anti-ANXA7 (Cat# [TA590070]). Positive lysates [LY400464] (100ug) and [LC400464] (20ug) can be purchased separately from OriGene.



Western blot validation of overexpression lysate (Cat# [LY400464]) using anti-DDK antibody (Cat# [TA50011-100]). Left: Cell lysates from untransfected HEK293T cells; Right: Cell lysates from HEK293T cells transfected with RC201226 using transfection reagent MegaTran 2.0 (Cat# [TT210002]).



Coomassie blue staining of purified ANXA7 protein (Cat# [TP301226]). The protein was produced from HEK293T cells transfected with ANXA7 cDNA clone (Cat# RC201226) using MegaTran 2.0 (Cat# [TT210002]).