

## Product datasheet for **RC201159**

### UBE2G1 (NM\_003342) Human Tagged ORF Clone

#### Product data:

Product Type:	Expression Plasmids
Product Name:	UBE2G1 (NM_003342) Human Tagged ORF Clone
Tag:	Myc-DDK
Symbol:	UBE2G1
Synonyms:	E217K; UBC7; UBE2G
Mammalian Cell Selection:	Neomycin
Vector:	pCMV6-Entry (PS100001)
E. coli Selection:	Kanamycin (25 ug/mL)
ORF Nucleotide Sequence:	>RC201159 representing NM_003342 Red=Cloning site Blue=ORF Green=Tags(s)

TTTTGTAATACGACTCACTATAGGGCGGCCGGAATTCGTCGACTGGATCCGGTACCGAGGAGATCTGCC  
GCC**CGATCGCC**

ATGACGGAGCTGCAGTCGGCACTGCTACTGCGAAGACAGCTGGCAGAACTCAACAAAAATCCAGTGGAAAG  
GCTTTTCTGCAGGTTTAATAGATGACAATGATCTCTACCGATGGGAAGTCCTTATTATTGGCCCTCCAGA  
TACTTTTATGAAGGTGGTGTTTTAAAGGCTCATCTTACTTTCCAAAAGATTATCCCTCCGACCTCT  
AAAATGAAATTCATTACAGAAATCTGGCACCCAAATGTTGATAAAAATGGTGATGTGTGCATTTCTATTC  
TTCATGAGCCTGGGAAGATAAGTATGGTTATGAAAAGCCAGAGGAACGCTGGCTCCCTATCCACTGT  
GGAAACCATCATGATTAGTGTCATTTCTATGCTGGCAGACCTAATGGAGACTCACCTGCTAATGTTGAT  
GCTGCGAAAGAATGGAGGAAGATAGAAATGGAGAATTTAAAAGAAAAGTTGCCCGCTGTGTAAGAAAAA  
GCCAAGAGACTGCTTTTGAG

**ACGCGT**ACGCGGCCGCTCGAGCAGAAACTCATCTCAGAAGAGGATCTGGCAGCAAATGATATCCTGGATT  
ACAAGGATGACGACGATAAGGTTTAA

Protein Sequence:	>RC201159 representing NM_003342 Red=Cloning site Green=Tags(s)
-------------------	--

MTELQSALLRRQLAELNKNPVEGFSAGLIDDNDLYRWEVLIIGPPDTLYEGGVFKAHLTFPKDYPLRPP  
KMKFITEIWHPNVDKNGDVCISILHEPGEDKYGYEKPEERWLPPIHTVETIMISVISMLADPNGDSPANVD  
AAKEWREDRNGEFKRKVARCVRKSQETAFE

**TR**TRPLEQKLISEEDLAANDILDYKDDDDKV

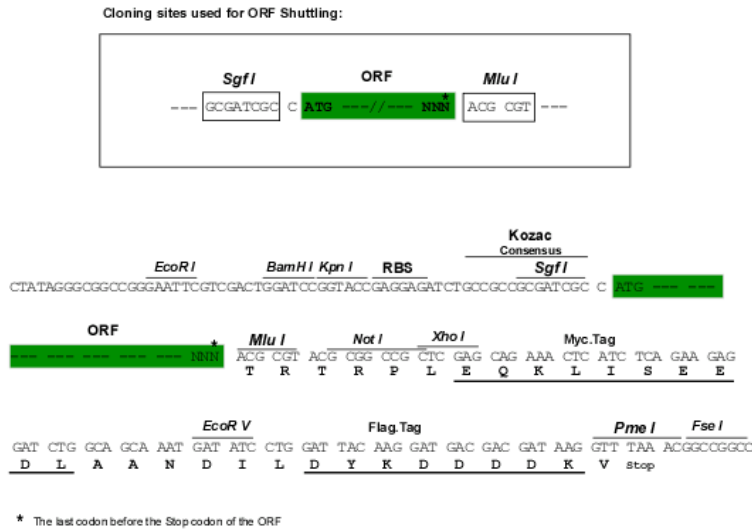
Chromatograms:	<a href="https://cdn.origene.com/chromatograms/mg2875_b12.zip">https://cdn.origene.com/chromatograms/mg2875_b12.zip</a>
----------------	---



[View online »](#)

**Restriction Sites:** SgfI-MluI

**Cloning Scheme:**



**ACCN:** NM\_003342

**ORF Size:** 510 bp

**OTI Disclaimer:** Due to the inherent nature of this plasmid, standard methods to replicate additional amounts of DNA in E. coli are highly likely to result in mutations and/or rearrangements. Therefore, OriGene does not guarantee the capability to replicate this plasmid DNA. Additional amounts of DNA can be purchased from OriGene with batch-specific, full-sequence verification at a reduced cost. Please contact our customer care team at [custsupport@origene.com](mailto:custsupport@origene.com) or by calling 301.340.3188 option 3 for pricing and delivery.

The molecular sequence of this clone aligns with the gene accession number as a point of reference only. However, individual transcript sequences of the same gene can differ through naturally occurring variations (e.g. polymorphisms), each with its own valid existence. This clone is substantially in agreement with the reference, but a complete review of all prevailing variants is recommended prior to use. [More info](#)

**OTI Annotation:** This clone was engineered to express the complete ORF with an expression tag. Expression varies depending on the nature of the gene.

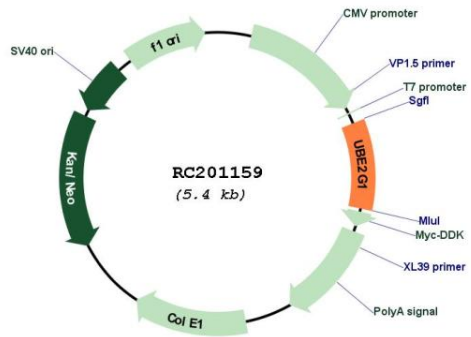
**Components:** The ORF clone is ion-exchange column purified and shipped in a 2D barcoded Matrix tube containing 10ug of transfection-ready, dried plasmid DNA (reconstitute with 100 ul of water).

- Reconstitution Method:**
1. Centrifuge at 5,000xg for 5min.
  2. Carefully open the tube and add 100ul of sterile water to dissolve the DNA.
  3. Close the tube and incubate for 10 minutes at room temperature.
  4. Briefly vortex the tube and then do a quick spin (less than 5000xg) to concentrate the liquid at the bottom.
  5. Store the suspended plasmid at -20°C. The DNA is stable for at least one year from date of shipping when stored at -20°C.

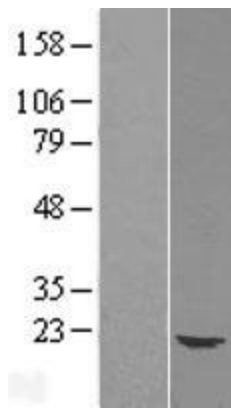
**RefSeq:** [NM\\_003342.4, NP\\_003333.1](#)  
**RefSeq Size:** 4208 bp  
**RefSeq ORF:** 513 bp  
**Locus ID:** 7326  
**UniProt ID:** [P62253](#)  
**Cytogenetics:** 17p13.2  
**Domains:** UBCc  
**Protein Pathways:** Parkinson's disease, Ubiquitin mediated proteolysis  
**MW:** 19.3 kDa

**Gene Summary:** The modification of proteins with ubiquitin is an important cellular mechanism for targeting abnormal or short-lived proteins for degradation. Ubiquitination involves at least three classes of enzymes: ubiquitin-activating enzymes, or E1s, ubiquitin-conjugating enzymes, or E2s, and ubiquitin-protein ligases, or E3s. This gene encodes a member of the E2 ubiquitin-conjugating enzyme family and catalyzes the covalent attachment of ubiquitin to other proteins. The protein may be involved in degradation of muscle-specific proteins. [provided by RefSeq, Jul 2008]

### Product images:



Circular map for RC201159



Western blot validation of overexpression lysate (Cat# [LY418760]) using anti-DDK antibody (Cat# [TA50011-100]). Left: Cell lysates from untransfected HEK293T cells; Right: Cell lysates from HEK293T cells transfected with RC201159 using transfection reagent MegaTran 2.0 (Cat# [TT210002]).



Coomassie blue staining of purified UBE2G1 protein (Cat# [TP301159]). The protein was produced from HEK293T cells transfected with UBE2G1 cDNA clone (Cat# RC201159) using MegaTran 2.0 (Cat# [TT210002]).