

Product datasheet for **RC201137**

RFX3 (NM_134428) Human Tagged ORF Clone

Product data:

Product Type:	Expression Plasmids
Product Name:	RFX3 (NM_134428) Human Tagged ORF Clone
Tag:	Myc-DDK
Symbol:	RFX3
Mammalian Cell Selection:	Neomycin
Vector:	pCMV6-Entry (PS100001)
E. coli Selection:	Kanamycin (25 ug/mL)



[View online »](#)

ORF Nucleotide
Sequence:

>RC201137 ORF sequence
Red=Cloning site Blue=ORF Green=Tags(s)

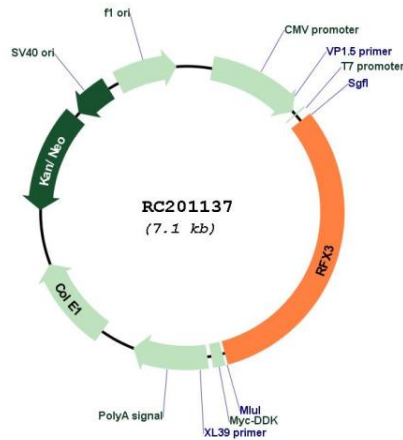
TTTTGTAATACGACTCACTATAGGGCGGCCGGAATTCGTGACTGGATCCGGTACCGAGGAGATCTGCC
GCCGCGATCGCC

ATGCAGACATCAGAGACTGGGTCGGACACAGGCTCGACAGTGACCTTACAAACATCTGTGGCTAGTCAAG
CAGCAGTGCCTACGCAGGTGGTACAGCAAGTACCAGTACAACAACAGGTACAGCAGGTACAGACTGTGCA
GCAGGTACAACATGTCTATCCCGCTCAGGTGCAGTATGTGGAAGGAAGCGATACTGTCTATACCAATGGA
GCAATCCGAACAACAACGTATCCTTACACAGAGACACAGATGTACAGCCAAAATACTGGAGGGAATTACT
TTGATACTCAAGGGAGTTCGCCAGGTGACTACCGTGGTCTCATCCACAGTATGGTGGCACTGGTGG
GATTGAGATGGGCGTCACAGGAGGACAACCTCATCAGCAGCTCTGGAGGAACCTATCTGATCGGCAACTCA
ATGGAGAATTCTGGTCACTCAGTGACACACAACCTCGGGCTCCCGAGCGACAATTGAAATGGCGATTG
AGACGCTGCAAAAGTCTGACGGTCTGTCCACTCACAGAAGCTCTTTCTCAACAGCCATCTCCAGTGGCT
GTTGGACAATTATGAGACAGCAGAAGGAGTGAGCCTTCCAGAAGCACTGTACAACCACTACCTTCGA
CACTGTACAGGAACACAACTGGACCCAGTCAATGCTGCCTCTTTGGAAAATTAATAAGATCAATTTTTA
TGGGGCTACGAACCAGGAGATTGGGCACTAGAGGAAACTCCAAATACCACTACTATGGGATTCGTGTCAA
GCCAGATCCCTCTTAATCGTCTGCAAGAAGACATGCAGTATATGGCTATGAGACAACAACCCATGCAA
CAGAAACAAGGTACAAGCCTATGCAGAAAGTGGATGGGGTTGCAGATGGTTTCACAGGAAGTGGTCAAC
AGACAGGCACATCTGTTGAGCAAAGTGAATGCCCAAAGCCAACATCATCAACAGTTTTTATAGATGCATC
TCGAGCACTTCCAGAGTTTGGAGAAGTTGAAATCTTTCTGCCAGATGGTACTACCTTGGAGGATATC
AAGTCACTGCAGAGTCTTATAGAGAGCACTGTGAGGCAATATTGGACGTTGTTGTAATCTTCAATTTA
GCCTGATAGAAAAATTGGGCAACATTTGGCGCTATTCTCCCTACTCCAAGTGGCACTACCACTACCA
TACCGAATCGAGCAATCTGAGTGAATAGAAAGTCGACTTCCGAAAGCAAAGCTGATAACTCTGTGCAAA
CATGAGTCTATCCTGAAATGGATGTGAACTGTGACCATGGGATGTACCAGGCTTTGGTGGAGATTCTCA
TCCCGCAGCTCCTTAGACCTATTCTAGTGCCTTGACCCAAGCCATTGCAAAATTTGCAAAAAGCCTTGA
AGGTTGGCTTTCCAATGCCATGAACAATTTCCACAGAGAATGATACAAACCAAGGTTGCCGCTGTAAGT
GCCTTTGCCAGACTCTGCGAAGATACACGTCGCTTAATCACCTGGCCAGGCAGCTCGTGCAGTGTCTC
AGAACACTTCCAAATCAACCAGATGCTTAGTGACCTCAACCGTGTGACTTTGCCAATGTCCAGGAGCA
GGCTTCTGGGTGTGCCAGTGTGATGACAACATGGTTCAGAGACTAGAAACAGACTTCAAGATGACTCTT
CAGCAGCAGAGCACCCCTGGAGCAGTGGGCTGCGTGGCTTGACAATGTGATGATGCAAGCACTGAAACCT
ATGAAGGAAGACCCAGTTTTCTAAAGCCGCCAGGCAGTTTCTGCTAAAAATGGTCTTTCTACAGCTCAAT
GGTTATTCGGGACTTAACCTTACGCAGTGTGCTAGCTTTGGCTCCTTCCACCTGATCCGCTACTCTAC
GACGAATATATGTTTTACTTAGTAGAACATCGTGTGCTCAGGCAACAGGAGAGACTCCTATAGCAGTCA
TGGGCGAGTTTGGTGATTTAAATGCCGTGTCTCCTGGAATCTGGATAAAGATGAAGGCAGTGAAGTAGA
AAGTGAATGGATGAAGAAGTGGATGACTCTTCAGAGCCTCAAGCCAAAAGAGAGAAAACAGAGCTGAGC
CAGGCATTTCCAGTGGGCTGCATGCAGCCTGTTCTCGAGACTGGCGTGAACCAAGCCTCCTGAATCCAA
TTCACAGCGAGCACATTTGCACAAGTACTCAGACTATCAGACAGTGCAGCGCTACAGGAAATACCTACAC
TGCAGTC

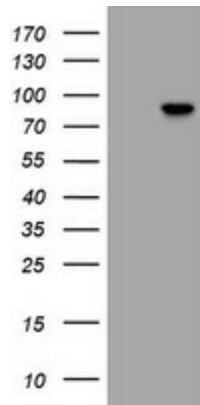
ACGCGTACGCGGCCGCTCGAGCAGAACTCATCTCAGAAGAGGATCTGGCAGCAAATGATATCCTGGATT
ACAAGGATGACGACGATAAGGTTTAA

Components:	The ORF clone is ion-exchange column purified and shipped in a 2D barcoded Matrix tube containing 10ug of transfection-ready, dried plasmid DNA (reconstitute with 100 ul of water).
Reconstitution Method:	<ol style="list-style-type: none">1. Centrifuge at 5,000xg for 5min.2. Carefully open the tube and add 100ul of sterile water to dissolve the DNA.3. Close the tube and incubate for 10 minutes at room temperature.4. Briefly vortex the tube and then do a quick spin (less than 5000xg) to concentrate the liquid at the bottom.5. Store the suspended plasmid at -20°C. The DNA is stable for at least one year from date of shipping when stored at -20°C.
RefSeq:	NM_134428.3
RefSeq Size:	9338 bp
RefSeq ORF:	2250 bp
Locus ID:	5991
UniProt ID:	P48380
Cytogenetics:	9p24.2
Domains:	RFX_DNA_binding, RFX1_trans_act
Protein Families:	Transcription Factors
MW:	83.5 kDa
Gene Summary:	This gene is a member of the regulatory factor X gene family, which encodes transcription factors that contain a highly-conserved winged helix DNA binding domain. The protein encoded by this gene is structurally related to regulatory factors X1, X2, X4, and X5. It is a transcriptional activator that can bind DNA as a monomer or as a heterodimer with other RFX family members. Multiple transcript variants encoding different isoforms have been described for this gene. [provided by RefSeq, Aug 2013]

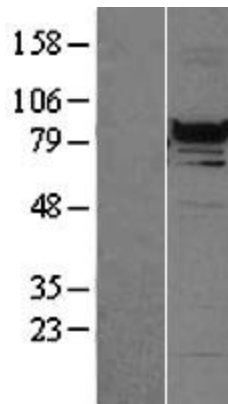
Product images:



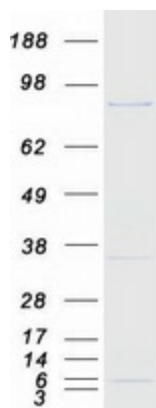
Circular map for RC201137



HEK293T cells were transfected with the pCMV6-ENTRY control (Cat# [PS100001], Left lane) or pCMV6-ENTRY RFX3 (Cat# RC201137, Right lane) cDNA for 48 hrs and lysed. Equivalent amounts of cell lysates (5 ug per lane) were separated by SDS-PAGE and immunoblotted with anti-RFX3 (Cat# [TA505916]). Positive lysates [LY403344] (100ug) and [LC403344] (20ug) can be purchased separately from OriGene.



Western blot validation of overexpression lysate (Cat# [LY403344]) using anti-DDK antibody (Cat# [TA50011-100]). Left: Cell lysates from untransfected HEK293T cells; Right: Cell lysates from HEK293T cells transfected with RC201137 using transfection reagent MegaTran 2.0 (Cat# [TT210002]).



Coomassie blue staining of purified RFX3 protein (Cat# [TP301137]). The protein was produced from HEK293T cells transfected with RFX3 cDNA clone (Cat# RC201137) using MegaTran 2.0 (Cat# [TT210002]).