

## Product datasheet for **RC200847**

### WNT5B (NM\_030775) Human Tagged ORF Clone

#### Product data:

Product Type:	Expression Plasmids
Product Name:	WNT5B (NM_030775) Human Tagged ORF Clone
Tag:	Myc-DDK
Symbol:	WNT5B
Mammalian Cell Selection:	Neomycin
Vector:	pCMV6-Entry (PS100001)
E. coli Selection:	Kanamycin (25 ug/mL)
ORF Nucleotide Sequence:	>RC200847 ORF sequence Red=Cloning site Blue=ORF Green=Tags(s)

TTTTGTAATACGACTCACTATAGGGCGGCCGGAATTCGTCGACTGGATCCGGTACCGAGGAGATCTGCC  
GCC**CGATCGCC**

ATGCCAGCCTGCTGCTGCTGTTACGGCTGCTCTGCTGTCCAGCTGGGCTCAGCTTCTGACAGACGCCA  
ACTCCTGGTGGTCATTAGCTTTGAACCCGGTGCAGAGACCCGAGATGTTTATCATCGGTGCCAGCCCGT  
GTGCAGTCAGCTTCCCGGGCTCTCCCTGGCCAGAGGAAGCTGTGCCAATTGTACCAGGAGCACATGGCC  
TACATAGGGGAGGGAGCCAAGACTGGCATCAAGGAATGCCAGCACCAGTCCGGCAGCGGGTGGAAAT  
GCAGCACAGCGACAACGCATCTGTCTTTGGGAGAGTCATGCAGATAGGCAGCCGAGAGACCCGCTTCCAC  
CCACGCGGTGAGCGCCGCGGGCGTGGTCAACGCCATCAGCCGGGCTGCCGCGAGGGCGAGCTCTCCACC  
TGCGGCTGCAGCCGACGCGCGGCCCAAGGACCTGCCCGGGACTGGCTGTGGGCGGCTGTGGGACA  
ACGTGGAGTACGGCTACCGCTTCGCAAGGAGTTTGTGGATGCCCGGAGCGAGAGAAGAACTTTGCCAA  
AGGATCAGAGGAGCAGGGCCGGGTGCTCATGAACCTGCAAAACAACGAGGCCGGTGCAGGGCTGTGTAT  
AAGATGGCAGACGTAGCCTGCAATGCCACGGCTCTCGGGTCTGCAGCCTCAAGACCTGCTGGCTGC  
AGCTGGCCGAGTCCGCAAGGTCGGGACCGGCTGAAGGAGAAGTACGACAGCGCGGCCCATGCGCGT  
CACCCGAAGGGCCGGCTGGAGCTGGTCAACAGCCGCTTACCCAGCCCACCCGGAGGACCTGGTCTAT  
GTGGACCCAGCCCCGACTACTGCTGCGCAACGAGAGCAGGGCTCCCTGGGCACGAGGGCCGCTCT  
GCAACAAGACCTCGGAGGGCATGGATGGCTGTGAGCTCATGTGCTGCGGGCGTGGCTACAACAGTTCAA  
GAGCGTGCAAGTGGAGCGCTGCCACTGCAAGTCCACTGGTGTCTTCGTGAGGTGTAAGAAGTGCACG  
GAGATCGTGGACAGTACATCTGTAAA

**ACGCGT**ACGCGGCCGCTCGAGCAGAACTCATCTCAGAAGAGGATCTGGCAGCAAATGATATCCTGGATT  
ACAAGGATGACGACGATAAGGTTTAA



[View online »](#)

**Protein Sequence:** >RC200847 protein sequence  
Red=Cloning site Green=Tags(s)

MPSLLLLFTAALLSSWAQLLTDANSWWSLALNPVQRPEMFIIGAQPVCSQLPGLSPGQRKLCQLYQEHMA  
 YIGEGAKTGIKECQHQRFRQRRWNCSTADNASVFGVMQIGSRETAFTHAVSAAGVVAISRACREGELST  
 CGCSRTARPKDLPRDWLWGGCGDNVEYGYRFAKEFVDAREREKNFAKGSEEQGRVLMNLQNEAGRRAVY  
 KMADVACKCHGVSGSCSLKTCWLQLAEFRKVGDRLEKEKYDSAAAMRVTRKGRLELVNSRF TQPTPEDLVY  
 VDPSPDYCLRNSTGSLGTQGRLCNKTSEGMDGCELMCCGRGYNQFKSVQVERCHCKFWCCFVRCKKCT  
 EIVDQYICK

TRTRPLEQKLISEEDLAANDILDYKDDDDKV

**Chromatograms:** [https://cdn.origene.com/chromatograms/mk6081\\_a08.zip](https://cdn.origene.com/chromatograms/mk6081_a08.zip)

**Restriction Sites:** Sgfl-MluI

**Cloning Scheme:**

Cloning sites used for ORF Shuttling:



\* The last codon before the Stop codon of the ORF

**ACCN:** NM\_030775

**ORF Size:** 1077 bp

**OTI Disclaimer:** The molecular sequence of this clone aligns with the gene accession number as a point of reference only. However, individual transcript sequences of the same gene can differ through naturally occurring variations (e.g. polymorphisms), each with its own valid existence. This clone is substantially in agreement with the reference, but a complete review of all prevailing variants is recommended prior to use. [More info](#)

**OTI Annotation:** This clone was engineered to express the complete ORF with an expression tag. Expression varies depending on the nature of the gene.

**Components:** The ORF clone is ion-exchange column purified and shipped in a 2D barcoded Matrix tube containing 10ug of transfection-ready, dried plasmid DNA (reconstitute with 100 ul of water).

**Reconstitution Method:**

1. Centrifuge at 5,000xg for 5min.
2. Carefully open the tube and add 100ul of sterile water to dissolve the DNA.
3. Close the tube and incubate for 10 minutes at room temperature.
4. Briefly vortex the tube and then do a quick spin (less than 5000xg) to concentrate the liquid at the bottom.
5. Store the suspended plasmid at -20°C. The DNA is stable for at least one year from date of shipping when stored at -20°C.

**RefSeq:** [NM\\_030775.2](#), [NP\\_110402.2](#)

**RefSeq Size:** 2184 bp

**RefSeq ORF:** 1080 bp

**Locus ID:** 81029

**UniProt ID:** [Q9H1J7](#)

**Cytogenetics:** 12p13.33

**Domains:** wnt

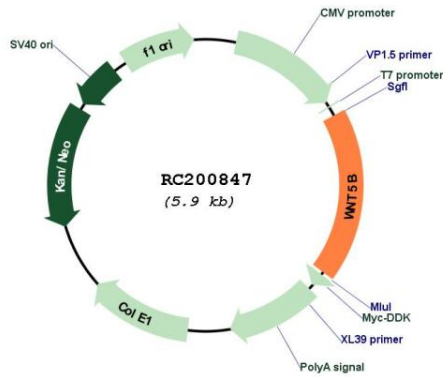
**Protein Families:** Secreted Protein

**Protein Pathways:** Basal cell carcinoma, Hedgehog signaling pathway, Melanogenesis, Pathways in cancer, Wnt signaling pathway

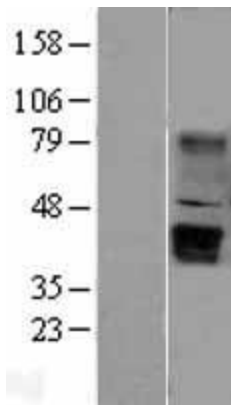
**MW:** 40.3 kDa

**Gene Summary:** The WNT gene family consists of structurally related genes which encode secreted signaling proteins. These proteins have been implicated in oncogenesis and in several developmental processes, including regulation of cell fate and patterning during embryogenesis. This gene is a member of the WNT gene family. It encodes a protein which shows 94% and 80% amino acid identity to the mouse Wnt5b protein and the human WNT5A protein, respectively. Alternative splicing of this gene generates 2 transcript variants. [provided by RefSeq, Jul 2008]

Product images:



Circular map for RC200847



Western blot validation of overexpression lysate (Cat# [LY403078]) using anti-DDK antibody (Cat# [TA50011-100]). Left: Cell lysates from untransfected HEK293T cells; Right: Cell lysates from HEK293T cells transfected with RC200847 using transfection reagent MegaTran 2.0 (Cat# [TT210002]).