

Product datasheet for **RC200812**

Cyclin B1 (CCNB1) (NM_031966) Human Tagged ORF Clone

Product data:

Product Type:	Expression Plasmids
Product Name:	Cyclin B1 (CCNB1) (NM_031966) Human Tagged ORF Clone
Tag:	Myc-DDK
Symbol:	Cyclin B1
Synonyms:	CCNB
Mammalian Cell Selection:	Neomycin
Vector:	pCMV6-Entry (PS100001)
E. coli Selection:	Kanamycin (25 ug/mL)



[View online »](#)

ORF Nucleotide Sequence:

>RC200812 representing NM_031966
 Red=Cloning site Blue=ORF Green=Tags(s)

TTTTGTAATACGACTCACTATAGGGCGGCCGGAATTCGTCGACTGGATCCGGTACCGAGGAGATCTGCC
 GCC**CGCATCGCC**

ATGGCGCTCCGAGTCACCAGGAAGCTCGAAAATTAATGCTGAAAATAAGGCGAAGATCAACATGGCAGGCC
 CAAAGCGGTTCTCTACGGCCCTGCTGCAACCTCCAAGCCGGACTGAGGCCAAGAAGACAGCTCTTGGGGA
 CATTGGTAACAAAAGTCAGTGAACAACCTGCAAGCCAAAATGCCTATGAAGAAGGAAGCAAAACCTTCAGCT
 ACTGAAAAGTCATTGATAAAAACTACCAAACTCTTGAAAAGGTACCTATGCTGGTCCAGTCCAG
 TGTCTGAGCCAGTCCAGAGCCAGAACCTGAGCCAGAACCTGAGCCTGTTAAAGAAGAAAACTTTCGCC
 TGAGCCTATTTGGTTGATACTGCCTCTCAAGCCCAATGAAAACATCTGGATGTCCCTGCAGAAGAA
 GACCTGTGTCAGGCTTCTCTGATGTAATCTTGCAGTAAATGATGTGGATGCAGAAGATGGAGCTGATC
 CAAACCTTTGTAGTGAATATGTAAAGATTTTATGCTTATCTGAGACAACCTTGAGGAAGAGCAAGCAGT
 CAGACCAAAATACCTACTGGGTCGGGAAGTCAGTGGAAAACATGAGAGCCATCCTAATTGACTGGCTAGTA
 CAGGTTCAAATGAAATTCAGGTTGTTGCAGGAGACCATGTACATGACTGTCTCCATTATTGATCGGTTCA
 TGCAGAATAATTGTGTGCCAAGAAGATGCTGCAGCTGGTTGGTGTCACTGCCATGTTTATTGCAAGCAA
 ATATGAAGAAATGTACCCTCCAGAAATGGTGACTTTGCTTTTGTGACTGACAACACTTATACTAAGCAC
 CAAATCAGACAGATGAAATGAAGATTCTAAGAGCTTTAACTTTGGTCTGGGTCGGCCTCTACCTTTGC
 ACTTCTTCGGAGAGCATCTAAGATTGGAGAGGTTGATGTCGAGCAACATACTTTGGCCAAATACCTGAT
 GGAACACTAATGTTGGACTATGACATGGTGCACCTTCTCCTCTCAAATTCAGCAGGAGCTTTTTCG
 TTAGCACTGAAAATTCGGATAATGGTGAATGGACCAACTCTACAACATTACCTGTATATACTGAAG
 AATCTCTTCCAGTTATGCAGCACCTGGCTAAGAATGTAGTCATGGTAAATCAAGGACTTACAAAGCA
 CATGACTGTCAAGAACAAGTATGCCACATCGAAGCATGCTAAGATCAGCACTCTACCACAGCTGAATTCT
 GCACTAGTTCAAGATTTAGCCAAGGCTGTGGCAAAGGTG

ACGCGTACGCGGCCGCTCGAGCAGAACTCATCTCAGAAGAGGATCTGGCAGCAAATGATATCCTGGATT
 ACAAGGATGACGACGATAAGGTTTAA

Protein Sequence:

>RC200812 representing NM_031966
 Red=Cloning site Green=Tags(s)

MALRVTRNSKINAENKAKINMAGAKRVPTAPAATSKPGLRPRALGDIGNKVSEQLQAKMPMKKEAKPSA
 TGKVIDKKLKPPLKVPMLVPVPVSEPVPEPEPEPEPEPVKEEKLSEPEILVDTASPSMETSGCAPAEE
 DLCQAFSDVILAVNDVDAEDGADPNLCSEYVKDIYAYLRQLEEEQAVRPKYLLGREVTGNMRAILIDWL
 QVQMKFRLLQETMYMTVSIIDRFMQNNCPKMLQLVGVAMFIASKYEEMYPPEIGDFAFVTDNTYTKH
 QIRQMEMKILRALNFGLGRPLPLHFLRRASKIGEVDVEQHTLAKYLMELTMDYDMVHFPPSQIAAGAF
 LALKILDNGEWPTLQHYLSYTEESLLPVMQHLAKNVVMVQGLTKHMTVKNKYATSKHAKISTLPQLNS
 ALVQDLAKAVAKV

TRTRPLEQKLISEEDLAANDILDYKDDDDKV

Restriction Sites:

SgfI-MluI

Cloning Scheme:


ACCN: NM_031966

ORF Size: 1299 bp

OTI Disclaimer: Due to the inherent nature of this plasmid, standard methods to replicate additional amounts of DNA in E. coli are highly likely to result in mutations and/or rearrangements. Therefore, OriGene does not guarantee the capability to replicate this plasmid DNA. Additional amounts of DNA can be purchased from OriGene with batch-specific, full-sequence verification at a reduced cost. Please contact our customer care team at custsupport@origene.com or by calling 301.340.3188 option 3 for pricing and delivery.

The molecular sequence of this clone aligns with the gene accession number as a point of reference only. However, individual transcript sequences of the same gene can differ through naturally occurring variations (e.g. polymorphisms), each with its own valid existence. This clone is substantially in agreement with the reference, but a complete review of all prevailing variants is recommended prior to use. [More info](#)

OTI Annotation: This clone was engineered to express the complete ORF with an expression tag. Expression varies depending on the nature of the gene.

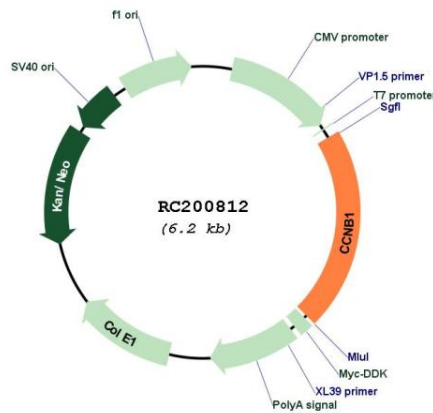
Components: The ORF clone is ion-exchange column purified and shipped in a 2D barcoded Matrix tube containing 10ug of transfection-ready, dried plasmid DNA (reconstitute with 100 ul of water).

- Reconstitution Method:**
1. Centrifuge at 5,000xg for 5min.
 2. Carefully open the tube and add 100ul of sterile water to dissolve the DNA.
 3. Close the tube and incubate for 10 minutes at room temperature.
 4. Briefly vortex the tube and then do a quick spin (less than 5000xg) to concentrate the liquid at the bottom.
 5. Store the suspended plasmid at -20°C. The DNA is stable for at least one year from date of shipping when stored at -20°C.

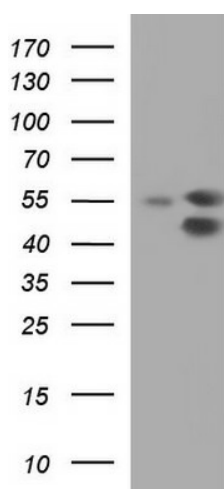
RefSeq: [NM_031966.4](#)

RefSeq Size:	2177 bp
RefSeq ORF:	1302 bp
Locus ID:	891
UniProt ID:	P14635
Cytogenetics:	5q13.2
Domains:	cyclin_C, CYCLIN, cyclin
Protein Families:	Druggable Genome, Stem cell - Pluripotency
Protein Pathways:	Cell cycle, Oocyte meiosis, p53 signaling pathway, Progesterone-mediated oocyte maturation
MW:	48.8 kDa
Gene Summary:	The protein encoded by this gene is a regulatory protein involved in mitosis. The gene product complexes with p34(cdc2) to form the maturation-promoting factor (MPF). The encoded protein is necessary for proper control of the G2/M transition phase of the cell cycle. [provided by RefSeq, Aug 2017]

Product images:



Circular map for RC200812



HEK293T cells were transfected with the pCMV6-ENTRY control (Cat# [PS100001], Left lane) or pCMV6-ENTRY CCNB1 (Cat# RC200812, Right lane) cDNA for 48 hrs and lysed. Equivalent amounts of cell lysates (5 ug per lane) were separated by SDS-PAGE and immunoblotted with anti-CCNB1 (Cat# [TA590439]).