

Product datasheet for RC200525L3

P70 S6 Kinase beta (RPS6KB2) (NM_003952) Human Tagged Lenti ORF Clone

Product data:

Product Type:	Expression Plasmids
Product Name:	P70 S6 Kinase beta (RPS6KB2) (NM_003952) Human Tagged Lenti ORF Clone
Tag:	Myc-DDK
Symbol:	P70 S6 Kinase beta
Synonyms:	KLS; p70(S6K)-beta; P70-beta; P70-beta-1; P70-beta-2; p70S6Kb; S6K-beta2; S6K2; S6KB; S6Kbeta; S6KI(2); SRK; STK14B
Mammalian Cell Selection:	Puromycin
Vector:	pLenti-C-Myc-DDK-P2A-Puro (PS100092)
E. coli Selection:	Chloramphenicol (34 ug/mL)
ORF Nucleotide Sequence:	The ORF insert of this clone is exactly the same as(RC200525).
Restriction Sites:	SgfI-MluI
Cloning Scheme:	

Cloning sites used for ORF Shuttling:



* The last codon before the Stop codon of the ORF.

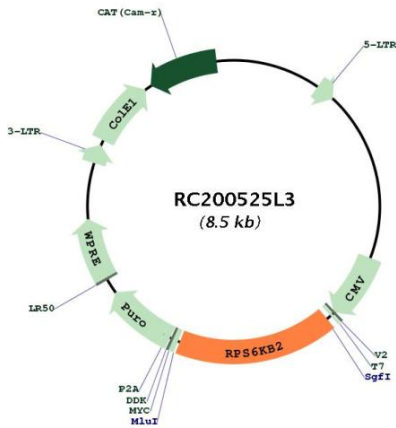
ACCN:	NM_003952
ORF Size:	1446 bp



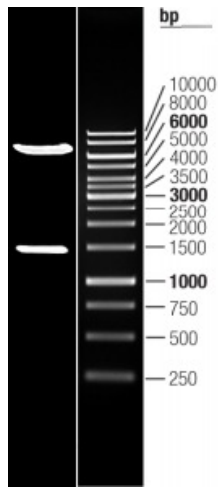
[View online »](#)

OTI Disclaimer:	The molecular sequence of this clone aligns with the gene accession number as a point of reference only. However, individual transcript sequences of the same gene can differ through naturally occurring variations (e.g. polymorphisms), each with its own valid existence. This clone is substantially in agreement with the reference, but a complete review of all prevailing variants is recommended prior to use. More info
OTI Annotation:	This clone was engineered to express the complete ORF with an expression tag. Expression varies depending on the nature of the gene.
Components:	The ORF clone is ion-exchange column purified and shipped in a 2D barcoded Matrix tube containing 10ug of transfection-ready, dried plasmid DNA (reconstitute with 100 ul of water).
Reconstitution Method:	<ol style="list-style-type: none">1. Centrifuge at 5,000xg for 5min.2. Carefully open the tube and add 100ul of sterile water to dissolve the DNA.3. Close the tube and incubate for 10 minutes at room temperature.4. Briefly vortex the tube and then do a quick spin (less than 5000xg) to concentrate the liquid at the bottom.5. Store the suspended plasmid at -20°C. The DNA is stable for at least one year from date of shipping when stored at -20°C.
RefSeq:	NM_003952.2 , NP_003943.2
RefSeq Size:	1782 bp
RefSeq ORF:	1449 bp
Locus ID:	6199
UniProt ID:	Q9UBS0
Cytogenetics:	11q13.2
Domains:	pkinase, S_TK_X, TyrKc, S_TKc
Protein Families:	Druggable Genome, Protein Kinase
Protein Pathways:	Acute myeloid leukemia, ErbB signaling pathway, Fc gamma R-mediated phagocytosis, Insulin signaling pathway, mTOR signaling pathway, TGF-beta signaling pathway
MW:	53.5 kDa
Gene Summary:	This gene encodes a member of the RSK (ribosomal S6 kinase) family of serine/threonine kinases. This kinase contains a kinase catalytic domain and phosphorylates the S6 ribosomal protein and eukaryotic translation initiation factor 4B (eIF4B). Phosphorylation of S6 leads to an increase in protein synthesis and cell proliferation. [provided by RefSeq, Jan 2015]

Product images:



Circular map for RC200525L3



Double digestion of RC200525L3 using SgfI and MluI