

Product datasheet for RC200487

CNTF Receptor alpha (CNTFR) (NM_147164) Human Tagged ORF Clone

Product data:

Product Type:	Expression Plasmids
Product Name:	CNTF Receptor alpha (CNTFR) (NM_147164) Human Tagged ORF Clone
Tag:	Myc-DDK
Symbol:	CNTF Receptor alpha
Mammalian Cell Selection:	Neomycin
Vector:	pCMV6-Entry (PS100001)
E. coli Selection:	Kanamycin (25 ug/mL)
ORF Nucleotide Sequence:	>RC200487 ORF sequence Red=Cloning site Blue=ORF Green=Tags(s)

TTTTGTAATACGACTCACTATAGGGCGGCCGGAATTCGTCGACTGGATCCGGTACCGAGGAGATCTGCC
GCC**CGATCGCC**

ATGGCTGCTCCTGTCCCGTGGGCTGCTGTGCTGTGCTTGCCGCCGCCGCCGAGTTGTCTACGCCAGA
GACACAGTCCACAGGAGGCACCCATGTGCAGTACGAGCGCTGGGCTCTGACGTGACACTGCCATGTGG
GACAGCAAAGTGGGATGCTGCGGTGACGTGGCGGGTAAATGGGACAGACCTGGCCCTGACCTGTCAAC
GGCTCTCAGCTGGTGTCCATGGCCTGGAAGTGGGCCACAGTGGCCTCTACGCTGCTCCACCGTGTG
CCTGGCACCTGCGCCACCAAGTCTGTCATGTGGGCTTGCCGCCGCCGGGAGCCTGTGCTCAGCTGCCG
CTCCAACACTTACCCCAAGGGCTTCTACTGCAGCTGGCATCTGCCACCCACCTACATTCCCAACACC
TTCAATGTGACTGTGCTGCATGGCTCCAAAATTATGGTCTGTGAGAAGGACCCAGCCCTCAAGAACCCT
GCCACATTCGCTACATGCACCTGTTCTCCACCATCAAGTACAAGGTCTCCATAAGTGTGACGAATGCCCT
GGGCCACAATGCCACAGTATCACCTTTGACGAGTTCACCATTGTGAAGCCTGATCCTCCAGAAAATGTG
GTAGCCCGGCCAGTGGCCAGCAACCCTGCGCGCTGGAGGTGACGTGGCAGACCCCTCGACCTGGCCTG
ACCCTGAGTCTTTCTCTCAAGTCTTTCTGCGCTACCGACCCCTCATCTGGACCAGTGGCAGCATGT
GGAGCTGTCCGACGGCACAGCACACCATCACAGATGCCTACGCCGGGAAGGAGTACATTATCCAGGTG
GCAGCCAAGGACAATGAGATTGGGACATGGAGTACTGGAGCGTAGCCGCCACGCTACGCCCTGGACTG
AGGAACCGGACACCTCACACGGAGGCCAGGCTGCGGAGACCAGACCAGCACCACAGCTCCCTGGC
ACCCACCTACCACGAAGATCTGTGACCTGGGAGCTGGGACGCGCGGGGGACCCCTCGGCACCCCTT
TTGGTCAGCGTCCCATCACTCTGGCCCTGGTGCCGCTGCCGCCACTGCCAGCAGTCTCTTGATC

ACGCGTACGCGGCCGCTCGAGCAGAACTCATCTCAGAAGAGGATCTGGCAGCAAATGATATCCTGGATT
ACAAGGATGACGACGATAAGGTTTAA



[View online »](#)

Protein Sequence: >RC200487 protein sequence
Red=Cloning site Green=Tags(s)

MAAPVPWACCAVLAAAAVVYAQRHSPQEAPHVQYERLGSDVTLPCGTANWDAAVTWRVNGTDLAPDLLN
 GSQVLVHGLELGHSGLYACFHRDSWHLRHQVLLHVGLPPREPVLSCRNTYPKGFYCSWHLPTPTYIPNT
 FNVTVLHGSKIMVCEKDPALKNRCHIRYMHLFSTIKYKVISVSNALGHNATAITFDEFTIVKPDPPENV
 VARPVPSNPRRLEVWQTPSTWPDPEFPLKFFLRYRPLILDQWQHVELSDGTAHTITDAYAGKEYIIQV
 AAKDNEIGTWSWVAHAHPWTEPRHLTTEAQA AETTSTTSSSLAPPPTTKICDPGELGSGGGPSAPF
 LVSVPITLALAAAAATASLLI

TRTRPLEQKLISEEDLAANDILDYKDDDDKV

Chromatograms: https://cdn.origene.com/chromatograms/mk6052_e09.zip

Restriction Sites: Sgfl-MluI

Cloning Scheme:

Cloning sites used for ORF Shuttling:



* The last codon before the Stop codon of the ORF

ACCN: NM_147164

ORF Size: 1116 bp

OTI Disclaimer: The molecular sequence of this clone aligns with the gene accession number as a point of reference only. However, individual transcript sequences of the same gene can differ through naturally occurring variations (e.g. polymorphisms), each with its own valid existence. This clone is substantially in agreement with the reference, but a complete review of all prevailing variants is recommended prior to use. [More info](#)

OTI Annotation: This clone was engineered to express the complete ORF with an expression tag. Expression varies depending on the nature of the gene.

Components: The ORF clone is ion-exchange column purified and shipped in a 2D barcoded Matrix tube containing 10ug of transfection-ready, dried plasmid DNA (reconstitute with 100 ul of water).

Reconstitution Method:

1. Centrifuge at 5,000xg for 5min.
2. Carefully open the tube and add 100ul of sterile water to dissolve the DNA.
3. Close the tube and incubate for 10 minutes at room temperature.
4. Briefly vortex the tube and then do a quick spin (less than 5000xg) to concentrate the liquid at the bottom.
5. Store the suspended plasmid at -20°C. The DNA is stable for at least one year from date of shipping when stored at -20°C.

RefSeq: [NM_147164.3](#)

RefSeq Size: 2070 bp

RefSeq ORF: 1119 bp

Locus ID: 1271

UniProt ID: [P26992](#)

Cytogenetics: 9p13.3

Domains: ig, IGc2, IG, FN3

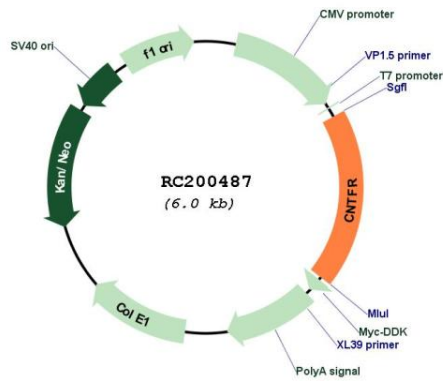
Protein Families: Druggable Genome

Protein Pathways: Cytokine-cytokine receptor interaction, Jak-STAT signaling pathway

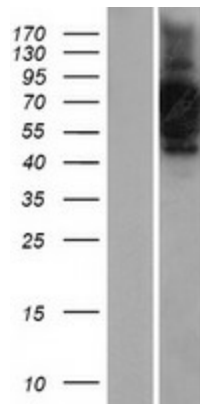
MW: 40.6 kDa

Gene Summary: This gene encodes a member of the type 1 cytokine receptor family. The encoded protein is the ligand-specific component of a tripartite receptor for ciliary neurotrophic factor, which plays a critical role in neuronal cell survival, differentiation and gene expression. Binding of ciliary neurotrophic factor to the encoded protein recruits the transmembrane components of the receptor, gp130 and leukemia inhibitory factor receptor, facilitating signal transduction. Single nucleotide polymorphisms in this gene may be associated with variations in muscle strength, as well as early onset of eating disorders. Alternatively spliced transcript variants have been observed for this gene. [provided by RefSeq, May 2011]

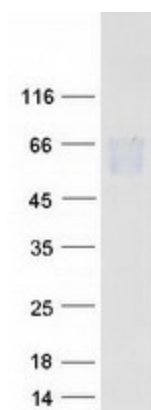
Product images:



Circular map for RC200487



Western blot validation of overexpression lysate (Cat# [LY403449]) using anti-DDK antibody (Cat# [TA50011-100]). Left: Cell lysates from untransfected HEK293T cells; Right: Cell lysates from HEK293T cells transfected with RC200487 using transfection reagent MegaTran 2.0 (Cat# [TT210002]).



Coomassie blue staining of purified CNTFR protein (Cat# [TP300487]). The protein was produced from HEK293T cells transfected with CNTFR cDNA clone (Cat# RC200487) using MegaTran 2.0 (Cat# [TT210002]).