

## Product datasheet for **RC200182**

### AP4 (REPIN1) (NM\_013400) Human Tagged ORF Clone

#### Product data:

Product Type:	Expression Plasmids
Product Name:	AP4 (REPIN1) (NM_013400) Human Tagged ORF Clone
Tag:	Myc-DDK
Symbol:	AP4
Synonyms:	AP4; RIP60; Zfp464; ZNF464
Mammalian Cell Selection:	Neomycin
Vector:	pCMV6-Entry (PS100001)
E. coli Selection:	Kanamycin (25 ug/mL)



[View online »](#)

**ORF Nucleotide Sequence:**

>RC200182 ORF sequence  
 Red=Cloning site Blue=ORF Green=Tags(s)

TTTTGTAATACGACTCACTATAGGGCGGCCGGGAATTCGTCGACTGGATCCGGTACCGAGGAGATCTGCC  
 GCC**CGGATCGCC**

ATGCTGGAACGTGTTGCAGGGGCCCTGGCCATGGGCCTGGCCAGCCCCGACTCCTTTCTGGGCCCT  
 CCCAGGAGTACCCCAGACCCTGGGAAGGAGTCCCGCGGGCTGAGGCAACAAGGCACGTAGTGGCCCA  
 GTCTGGTGCCCAAGCCCAGGCAGGGCCATCGCTGTGCCCACTGTGAAGGCACCTCCCTGGCTGGGTG  
 GCTCTGTGGCTTACACCCGCGGGTCCAGGCCCGGTGCCCTTGGCCTGCTCTGAGTGTGGCCGTCGCT  
 TTCGCCATGCCCCCTTCTAGCACTGCACCGCCAGGTCCATGCTGCTGCCACCCAGACCTGGGCTTTGC  
 CTGCCACCTCTGTGGCAGAGCTTCCGAGGCTGGGTGGCCCTGGTTCTGCATCTGCGGGCCATTAGCT  
 GCAAAGCGGCCCATCGCTTGTCCAAATGCGAGAGACGCTTCTGGCGACGAAAGCAGCTTCGAGCTCATC  
 TGCGGGGTGCCACCCTCCGCCCGGAGGCCCGCCCTCATATGCGGCAACTGTGGCCGGAGCTTTGC  
 CCAGTGGGACCAGCTAGTTGCCACAAGCGGGTGCACGTAGCTGAGGCCCTGGAGGAGGCCGAGCCAAG  
 GCTCTGGGGCCCGGCCAGGGCCGCCCGCGGTGACCGCCCCCGGCCGGTGGAGATGCCGTGACC  
 GCCCTTCCAGTGTGCCTGTTGTGGCAAGCGCTTCCGGCAACAAGCCAACTTGATCGCTACCGCCGCGT  
 GCACACGGGCGAGCGGCCACCAGTGCCCGAGTGCGGGAAGCGCTTTACCAATAAGCCATATCTGACT  
 TCGCACCGGCGCATCCACACCGGCGAGAAGCCCTACCCGTGCAAAGAGTGCAGGCCCGCTTCCGGCACA  
 AACCAACCTGTGTCTCACAGCAAGATTCACAAGCGATCCGAGGGGTGGGCCAGGCCCGCCCGGCC  
 GGGGAGCCCCAGCTGCCAGCGGCCCCAGGAGTCCCGGGCCGAGCCACCCCGCGGTACCTCTGAAA  
 CCGGCCAGGAGCCGCCAGGGGCCCGCAGAGCACCCGAGACCCGATCGAAGCCCCCCCCCTCC  
 TCTACAGCTGCGACGACTGCGGAGGAGCTTCCGGTGGAGCGCTTCTGCGGGCCACCAGCGGCAGCA  
 CACCGGGGAGCGCCCTTCACTGCGCCGAGTGCGGGAAGAACTTCGGCAAGAAGACGCACCTGTTGGCG  
 CACTCGCGCTGCACTCCGGCGAGCGCCCTTCGCCTGCGAGGAGTGCAGCCCGCTTCTCCAGGGCA  
 GCCATCTGGCGCGCATCGGCGGACACGCCCCGATCGGCCCTTCTGTGTCCCGACTGCGGCAAGGC  
 CTTCCGCCACAAACCCTACCTGGCGGCGACCGGCGCATCCACACCGGCGAGAAGCCCTACGCTGCCCC  
 GACTGCGGCAAAGCCTTACGCCAGAAGTCCAACCTGGTGTGCGACCGGCGCATCCACAGGGCGAGCGGC  
 CCTACGCTGTCCGACTGCGACCGCAGCTTACGCCAGAAGTCCAACCTCATACCCACCGCAAGAGCCA  
 CATCCGGGACGGCGCTTCTGCTGTGCCATCTGTGCCAGACCTCGACGACGAGGAGAGACTCTGGCC  
 CACCAGAAGAAGCACGATGTC

**ACGCGT**ACGCGGGCCGCTCGAGCAGAAACTCATCTCAGAAGAGGATCTGGCAGCAAATGATATCCTGGATT  
 ACAAGGATGACGACGATAAGGTTTAA

**Protein Sequence:**

>RC200182 protein sequence  
 Red=Cloning site Green=Tags(s)

MLERRCRGPLAMGLAQPRLLSGPSQESPTLGKESRGLRQQGTSVAQSGAQAPGRAHRCACRRHFPGWV  
 ALWLHTRRCQARLPLPCSECGRRFRHAPFLALHRQVHAAATPDLGFACHLCGQSFQSGVWALVHLRAHSA  
 AKRPIACPKCERRFWRKQLRAHLRCHPPAPEARPFICGNCGRSFAQWDQLVAHKRVHVAEALAAAAK  
 ALGPRPRGRPAVTAPRPGDAVDRPFQACCGKRFHKNPLIAHRRVHTGERPHQCPEGKRFNKPPLYT  
 SHRRIHTGEKPYPCKEGRRFRHKNLLSHSKIHKRSEGSQAAPGPGSPQLPAGPQESAAEPTPAVPLK  
 PAQEPGGAPPEHPQDPIEAPPSLYSCDDCGRSFRLERFLRAHQHQHTGERPFTCAECGKNFGKTHLVA  
 HSRVHSGERPFACEECGRRFSQGSHLAAHRRDHAPDRPFVCPDCGKAFRHKPYLAAHRRRIHTGEKPYVCP  
 DCGKAFSQQSNLVSHRRIHTGERPYACPDGRSFSQKSNLITHRKSIRDGAFCCAICGQTFDDEERLLA  
 HQKKHDV

**TR**TRPLEQKLISEEDLAANDILDYKDDDDKV

**Chromatograms:**

[https://cdn.origene.com/chromatograms/mk6398\\_a10.zip](https://cdn.origene.com/chromatograms/mk6398_a10.zip)

**Restriction Sites:**

Sgfl-Mlul

**Cloning Scheme:**


**ACCN:** NM\_013400

**ORF Size:** 1701 bp

**OTI Disclaimer:** The molecular sequence of this clone aligns with the gene accession number as a point of reference only. However, individual transcript sequences of the same gene can differ through naturally occurring variations (e.g. polymorphisms), each with its own valid existence. This clone is substantially in agreement with the reference, but a complete review of all prevailing variants is recommended prior to use. [More info](#)

**OTI Annotation:** This clone was engineered to express the complete ORF with an expression tag. Expression varies depending on the nature of the gene.

**Components:** The ORF clone is ion-exchange column purified and shipped in a 2D barcoded Matrix tube containing 10ug of transfection-ready, dried plasmid DNA (reconstitute with 100 ul of water).

- Reconstitution Method:**
1. Centrifuge at 5,000xg for 5min.
  2. Carefully open the tube and add 100ul of sterile water to dissolve the DNA.
  3. Close the tube and incubate for 10 minutes at room temperature.
  4. Briefly vortex the tube and then do a quick spin (less than 5000xg) to concentrate the liquid at the bottom.
  5. Store the suspended plasmid at -20°C. The DNA is stable for at least one year from date of shipping when stored at -20°C.

**RefSeq:** [NM\\_013400.3](#)

**RefSeq Size:** 3310 bp

**RefSeq ORF:** 1704 bp

**Locus ID:** 29803

**UniProt ID:** [Q9BWE0](#)

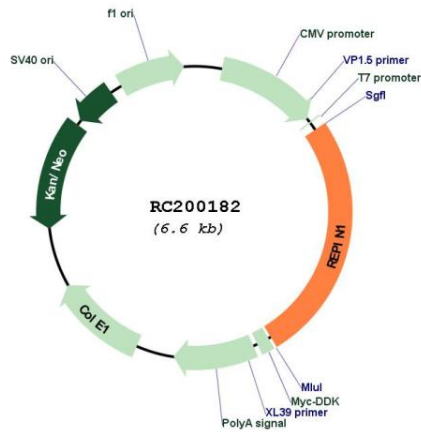
**Cytogenetics:** 7q36.1

**Domains:** zf-C2H2

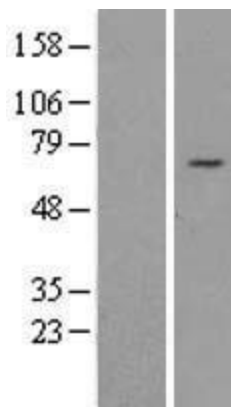
**MW:** 63.6 kDa

**Gene Summary:** Sequence-specific double-stranded DNA-binding protein required for initiation of chromosomal DNA replication. Binds on 5'-ATT-3' reiterated sequences downstream of the origin of bidirectional replication (OBR) and a second, homologous ATT sequence of opposite orientation situated within the OBR zone. Facilitates DNA bending.[UniProtKB/Swiss-Prot Function]

**Product images:**



Circular map for RC200182



Western blot validation of overexpression lysate (Cat# [LY420504]) using anti-DDK antibody (Cat# [TA50011-100]). Left: Cell lysates from untransfected HEK293T cells; Right: Cell lysates from HEK293T cells transfected with [RC224200] using transfection reagent MegaTran 2.0 (Cat# [TT210002]).