

Product datasheet for **RC200112**

IMP3 (NM_018285) Human Tagged ORF Clone

Product data:

Product Type: Expression Plasmids
Product Name: IMP3 (NM_018285) Human Tagged ORF Clone
Tag: Myc-DDK
Symbol: IMP3
Synonyms: BRMS2; C15orf12; MRPS4
Mammalian Cell Selection: Neomycin
Vector: pCMV6-Entry (PS100001)
E. coli Selection: Kanamycin (25 ug/mL)
ORF Nucleotide Sequence: >RC200112 ORF sequence
Red=Cloning site Blue=ORF Green=Tags(s)

TTTTGTAATACGACTCACTATAGGGCGCCGGGAATTCGTCGACTGGATCCGGTACCGAGGAGATCTGCC
GCC**CGATCGCC**

ATGGTGCGGAAGCTTAAGTTCCACGAGCAGAAGCTGCTGAAGCAGGTGGACTTCTGAAGTGGGAGGTCA
CCGACCACAACCTGCACGAGCTGCGCGTCTGCGCGTTACCGGCTGCAGCGCGGGAGGACTACACGCG
CTACAACCAGCTGAGCCGTGCCGTGCGTGAGCTGGCGCGCGCCTGCGCGACCTGCCCGAACGCGACCAG
TTCGCGTGCAGCTTCCGCGCGCTGCTGGACAAGCTGTATGCTCTCGCTTGGTCCACGCGCGGTT
CGCTGGAGCTCTGCGACTTCGTCACGGCCTCGTCTTCTGCCCGCGCCTCCCACCGTCTCCTCAA
GCTGCGCATGGCGCAGCACCTTCAGGCTCAGTGGCCTTTGTGGAGCAAGGCACGTACCGTGGGCCCT
GACGTGGTTACCGACCCCGCTTCTTGTACGCGCAGCATGGAGGACTTGTCACTTGGGTGGACTCGT
CCAAGTCAAGCGGCACGTGCTAGAGTACAATGAGGAGCGCGATGACTTCGATCTGGAAGCC

AG**CGGACCG**ACGCGTACGCGCCGCTCGAGCAGAACTCATCTCAGAAGAGGATCTGGCAGCAAATGATATCC
TGGATTACAAGGATGACGACGATAAGGTTTAA

Protein Sequence: >RC200112 protein sequence
Red=Cloning site Green=Tags(s)

MVRKLFHEQKLLKQVDFLNWEVTDHNLHELRLRRYRLQRREDYTRYNQLSRVRELARLRDLPERDQ
FRVRASAALLDKLYALGLVPTRGSLELCDFVTASSFCRRRLPTVLLKLRMAQHLQAQAVAFVEQGHVRVGP
DVVTDPAFLVTRSMEDFVTWVDSKIKRHVLEYNEERDDFDLEA

SGPTRTRPLEQKLI SEEDLAANDILDYKDDDDKV

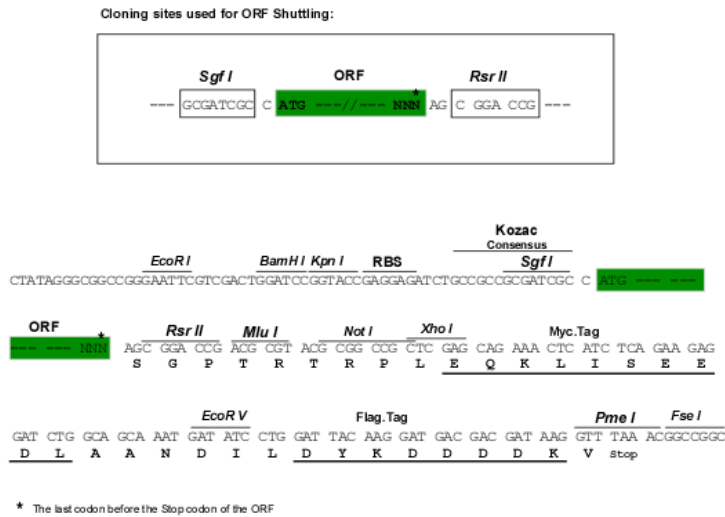
Chromatograms: https://cdn.origene.com/chromatograms/mk6614_a05.zip



[View online »](#)

Restriction Sites: SgfI-RsrII

Cloning Scheme:



ACCN: NM_018285

ORF Size: 552 bp

OTI Disclaimer: The molecular sequence of this clone aligns with the gene accession number as a point of reference only. However, individual transcript sequences of the same gene can differ through naturally occurring variations (e.g. polymorphisms), each with its own valid existence. This clone is substantially in agreement with the reference, but a complete review of all prevailing variants is recommended prior to use. [More info](#)

OTI Annotation: This clone was engineered to express the complete ORF with an expression tag. Expression varies depending on the nature of the gene.

Components: The ORF clone is ion-exchange column purified and shipped in a 2D barcoded Matrix tube containing 10ug of transfection-ready, dried plasmid DNA (reconstitute with 100 ul of water).

Reconstitution Method:

1. Centrifuge at 5,000xg for 5min.
2. Carefully open the tube and add 100ul of sterile water to dissolve the DNA.
3. Close the tube and incubate for 10 minutes at room temperature.
4. Briefly vortex the tube and then do a quick spin (less than 5000xg) to concentrate the liquid at the bottom.
5. Store the suspended plasmid at -20°C. The DNA is stable for at least one year from date of shipping when stored at -20°C.

RefSeq: [NM_018285.1](#)

RefSeq Size: 1255 bp

RefSeq ORF: 555 bp

Locus ID: 55272

UniProt ID: [Q9NV31](#)

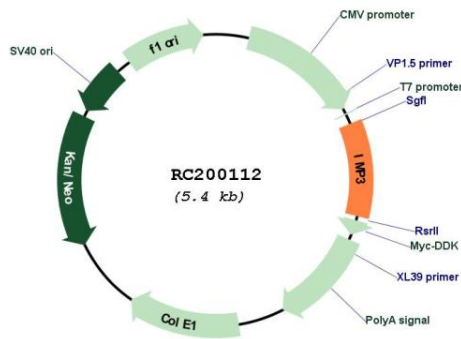
Cytogenetics: 15q24.2

Domains: S4

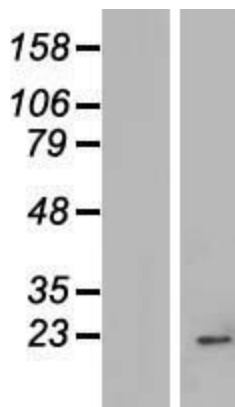
MW: 21.9 kDa

Gene Summary: This gene encodes the human homolog of the yeast Imp3 protein. The protein localizes to the nucleoli and interacts with the U3 snoRNP complex. The protein contains an S4 domain. [provided by RefSeq, Jul 2008]

Product images:



Circular map for RC200112



Western blot validation of overexpression lysate (Cat# [LY413095]) using anti-DDK antibody (Cat# [TA50011-100]). Left: Cell lysates from untransfected HEK293T cells; Right: Cell lysates from HEK293T cells transfected with RC200112 using transfection reagent MegaTran 2.0 (Cat# [TT210002]).