

## Product datasheet for **RC200066**

### Nucleostemin (GNL3) (NM\_014366) Human Tagged ORF Clone

#### Product data:

Product Type:	Expression Plasmids
Product Name:	Nucleostemin (GNL3) (NM_014366) Human Tagged ORF Clone
Tag:	Myc-DDK
Symbol:	Nucleostemin
Synonyms:	C77032; E2IG3; NNP47; NS
Mammalian Cell Selection:	Neomycin
Vector:	pCMV6-Entry (PS100001)
E. coli Selection:	Kanamycin (25 ug/mL)



[View online »](#)

**ORF Nucleotide Sequence:**

>RC200066 ORF sequence  
 Red=Cloning site Blue=ORF Green=Tags(s)

TTTTGTAATACGACTCACTATAGGGCGGCCGGAATTCGTCGACTGGATCCGGTACCGAGGAGATCTGCC  
 GCC**CGGATCGCC**

ATGAAAAGGCCTAAGTTAAAGAAAGCAAGTAAACGCATGACCTGCCATAAGCGGTATAAAATCCAAAAA  
 AGGTTTCGAGAACATCATCGAAAATTAAGAAAGGAGGCTAAAAAGCAGGGTACAAGAAGCCTAGGAAAGA  
 CCCAGGAGTTCACAAACAGTGCTCCCTTTAAGGAGGCTCTTCTTAGGGAAGCTGAGCTAAGGAAACAGAGG  
 CTTGAAGAACTAAAACAGCAGCAGAAAATTGACAGGCAGAAGGAAGTAAAAAGAAAAAGAACTTGAAA  
 CTAATCCTGATATTAAGCCATCAAATGTGGAACCTATGGAAAAGGAGTTTGGGCTTTGCAAACTGAGAA  
 CAAAGCCAAGTCGGGCAACAGAATTCAAAGAAGCTGTACTGCCAAGAACTTAAAAAGGTGATTGAAGCC  
 TCCGATGTTGCTAGAGGTGTTGGATGCCAGAGATCCTCTTGGTTGCAGATGCCTCAGGTAGAAGAGG  
 CCATTGTCAGAGTGGACAGAAAAGCTGGTACTTATATTAATAAATCAGATCTGGTACCAAGGAGAA  
 TTTGGAGAGCTGGCTAAATTATTTGAAGAAAGAATTGCCAACAGTGGTGTTCAGAGCCTCAACAAAACCA  
 AAGGATAAAGGGAAGATAACCAAGCGTGTGAAGGCAAAGAAGAATGCTGCTCCATTACAGAAGTGAAGTCT  
 GCTTTGGGAAAGAGGGCCTTTGGAACTTCTTGGAGGTTTTAGGAACTTGCAGCAAGCCATTCGGGT  
 TGGAGTAATTGGTTTCCCAATGTGGGAAAAGCAGCATTATCAATAGCTTAAAAACAAGAACAGATGTGT  
 AATGTTGGTGTATCCATGGGGCTTACAAGGAGCATGCAAGTTGTCCCCTTGGACAAAACAGATCACAATCA  
 TAGATAGTCCGAGCTTCATCGTATCTCCACTTAATTCCTCCTCTGCGCTTGTCTGCGAAGTCCAGCAAG  
 TATTGAAGTAGTAAAACCGATGGAGGCTGCCAGTGCCATCCTTTCCAGGCTGATGCTCGACAGGTAGTA  
 CTGAAATATACTGTCCCAGGCTACAGGAATTCTCTGGAATTTTTACTATGCTTGTCTCAGAGAAGAGGTA  
 TGCACCAAAAAGGTGGAATCCCAATGTTGAAGGTGCTGCCAACTGCTGTGGTCTGAGTGACAGGTGTC  
 CTATTAGCTTACTATTGCCATCCCCCTACATCTTGGACTCCTCCTCCATATTTAATGAGAGTATTGTG  
 GTAGACATGAAAAGCGGCTTCAATCTGGAAAGAACTGAAAAGAACAATGCACAGAGCATAAGAGCCATCA  
 AGGGCCCTCATTTGGCCAATAGCATCCTTTTCCAGTCTCCGGTCTGACAAATGGAATAATAGAAGAAA  
 GGACATACATGAAGAATTGCCAAAACGAAAGAAAGGAAGCAGGAGGAGAGGGAGGATGACAAAGACAGT  
 GACCAGGAACTGTTGATGAAGAAGTTGATGAAAACAGCTCAGGCATGTTTGTCTGCAGAAGACAGGGG  
 AGGCACGTCTGAGGAGACTACAGCAGGTGAACAGTCTACAAGGTCTTTATCTTGGATAAAATCATTGA  
 AGAGGATGATGCTTATGACTTCAGTACAGATTATGTG

**ACGCGT**ACGCGGCCGCTCGAGCAGAACTCATCTCAGAAGAGGATCTGGCAGCAAATGATATCCTGGATT  
 ACAAGGATGACGACGATAAGGTTTAA

**Protein Sequence:**

>RC200066 protein sequence  
 Red=Cloning site Green=Tags(s)

MKRPKLKKASKRMTCHKRYKIQKKVREHHRKLRKEAKKQGHKKPRKDPGVPNSAPFKEALLREELRKQR  
 LEELKQQQKLDQRQKELEKRRKLETNPDIKPSNVEPMEKEFGLCKTENKAKSGKQNSKLYCQELKKVIEA  
 SDVVLEVL DARDPLGCRCPQVEEAIVQSGQKLV LILNKSDLVPKENLESWLNLYLKKELPTVVFRSTKP  
 KDKGKITKRVKAKKNAAPFRSEVCFGKEGLWLLGGFQETCSKAIRVGVIGFPNVGKSSII NSLKQEQMC  
 NVGVSMGLTRSMQVPLDKQITIIDSPSFIVSPLNSSLALALRSPASIEVVKPMEEAASAILSQADARQVV  
 LKYTVPGYRNSLEFFTMLAQRGMHQGGIPNVEGAAKLLWSEWTGASLAYYCHPPTSWTPPPYFNESIV  
 VDMKSGFNLEELEKNNQSIIRAIGPHLANSILFQSSGLTNGIIEEKDIHEELPKRKRKQEEEREDDKDS  
 DQETVDEEVDENSSGMFAAEETGEALSEETTAGEQSTRSFILDKIIEEDDAYDFSTDYV

**TR**TRPLEQKLI SEEDLAANDILDYKDDDDKV

**Chromatograms:**

[https://cdn.origene.com/chromatograms/mk6276\\_f06.zip](https://cdn.origene.com/chromatograms/mk6276_f06.zip)

**Restriction Sites:**

Sgfl-MluI

Cloning Scheme:



ACCN: NM\_014366

ORF Size: 1647 bp

OTI Disclaimer: The molecular sequence of this clone aligns with the gene accession number as a point of reference only. However, individual transcript sequences of the same gene can differ through naturally occurring variations (e.g. polymorphisms), each with its own valid existence. This clone is substantially in agreement with the reference, but a complete review of all prevailing variants is recommended prior to use. [More info](#)

OTI Annotation: This clone was engineered to express the complete ORF with an expression tag. Expression varies depending on the nature of the gene.

Components: The ORF clone is ion-exchange column purified and shipped in a 2D barcoded Matrix tube containing 10ug of transfection-ready, dried plasmid DNA (reconstitute with 100 ul of water).

- Reconstitution Method:
1. Centrifuge at 5,000xg for 5min.
  2. Carefully open the tube and add 100ul of sterile water to dissolve the DNA.
  3. Close the tube and incubate for 10 minutes at room temperature.
  4. Briefly vortex the tube and then do a quick spin (less than 5000xg) to concentrate the liquid at the bottom.
  5. Store the suspended plasmid at -20°C. The DNA is stable for at least one year from date of shipping when stored at -20°C.

RefSeq: [NM\\_014366.3](#)

RefSeq Size: 2048 bp

RefSeq ORF: 1650 bp

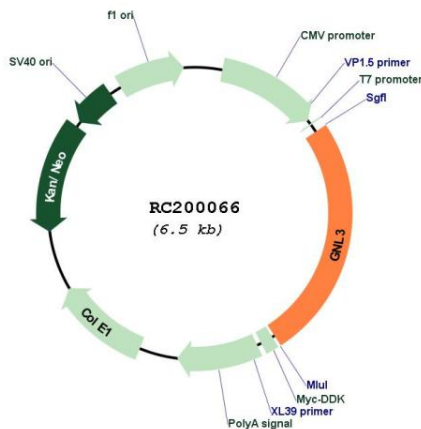
Locus ID: 26354

UniProt ID: [Q9BVP2](#)

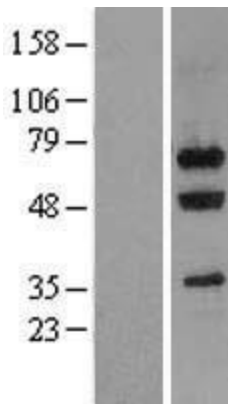
**Cytogenetics:** 3p21.1  
**Domains:** MMR\_HSR1  
**Protein Families:** ES Cell Differentiation/IPS, Stem cell - Pluripotency  
**MW:** 62 kDa

**Gene Summary:** The protein encoded by this gene may interact with p53 and may be involved in tumorigenesis. The encoded protein also appears to be important for stem cell proliferation. This protein is found in both the nucleus and nucleolus. Three transcript variants encoding two different isoforms have been found for this gene. [provided by RefSeq, Nov 2010]

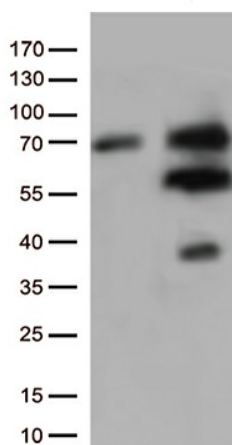
**Product images:**



Circular map for RC200066



Western blot validation of overexpression lysate (Cat# [LY415330]) using anti-DDK antibody (Cat# [TA50011-100]). Left: Cell lysates from untransfected HEK293T cells; Right: Cell lysates from HEK293T cells transfected with RC200066 using transfection reagent MegaTran 2.0 (Cat# [TT210002]).



HEK293T cells were transfected with the pCMV6-ENTRY control (Cat# [PS100001], Left lane) or pCMV6-ENTRY GNL3 (Cat# RC200066, Right lane) cDNA for 48 hrs and lysed. Equivalent amounts of cell lysates (5 ug per lane) were separated by SDS-PAGE and immunoblotted with anti-GNL3 (Cat# [TA813298])(1:500).