

Product datasheet for PS100030

pEX-N-His Bacterial Expression Vector

Product data:

Product Type: Bacterial Expression Vectors

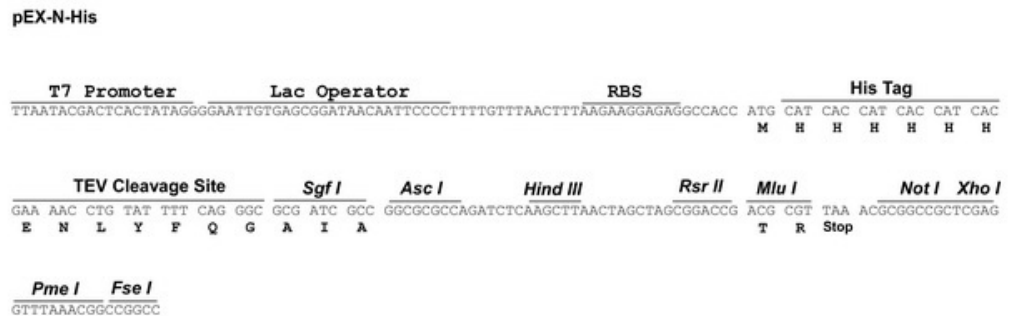
N-Tag: His

E. coli Selection: Ampicillin (100 ug/mL)

Features:

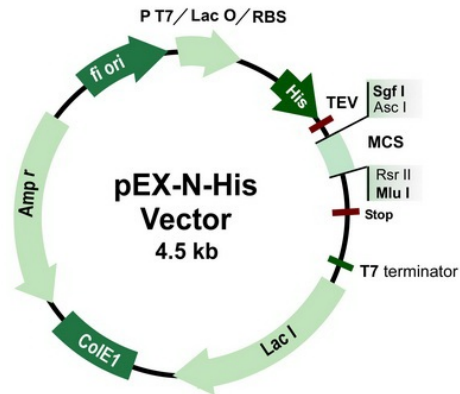
- Upon IPTG induction, ORFs cloned in this vector can be expressed in E.coli (BL21/DE3) as a tagged protein with an N-terminal His tag.
- Detection and purification of the transgene are best done using an anti-His antibody or a nickel affinity column.
- PS100030_F Primer (GE100106) can be used to sequence the target sequence after cloning.
- PS100028_R Primer (GE100133) can be used to sequence the target sequence after cloning.

Schematic of the multiple cloning sites:



[View online »](#)

Product images:



pEX-N-His

<u>T7 Promoter</u>	<u>Lac Operator</u>	<u>RBS</u>	<u>His Tag</u>				
TTAATACGACTCACTATAGGGGAAATTGTGAGCGGATAACAATTCCCCTTTTGTTAACCTTAAAGAGGAGAGGCCACC			ATG CAT CAC CAT CAC CAT CAC				
			M H H H H H H				
<u>TEV Cleavage Site</u>	<u>Sgf I</u>	<u>Asc I</u>	<u>Hind III</u>	<u>Rsr II</u>	<u>Mlu I</u>	<u>Not I</u>	<u>Xho I</u>
GAA AAC CTG TAT TTT CAG GGC GCG ATC GCC	GCG ATC GCC	GCGCGCCAGATCTCAAGCTTAACTAGCTAGCGGACCG		ACG CGT TAA	ACGCGCCGCTCGAG		
E N L Y F Q G A I A	A I A			T R Stop			
<u>Pme I</u>	<u>Fse I</u>						
GTTTAAACGGCCGGCC							