

## Product datasheet for **PP1011P1**

### G CSF (CSF3) Rabbit Polyclonal Antibody

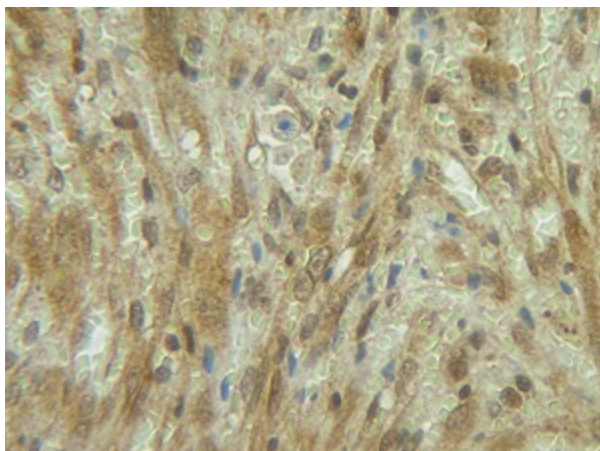
#### Product data:

Product Type:	Primary Antibodies
Applications:	ELISA, FN, IHC, WB
Recommended Dilution:	<p><b>Neutralization:</b> To yield one-half maximal inhibition [ND50] of the biological activity of Human G-CSF (0.5 ng/ml), a concentration of 0.04-0.06 µg/ml of this antibody is required.</p> <p><b>Sandwich ELISA:</b> To detect Human G-CSF by Sandwich ELISA (using 100 µl/well antibody solution) a concentration of 0.5-2.0 µg/ml of this antibody is required. This antigen affinity purified antibody, in conjunction with Biotinylated Anti-Human G-CSF (<i>Cat.-No</i> PP1011B1 or PP1011B2) as a detection antibody, allows the detection of at least 0.2-0.4 ng/well of recombinant Human G-CSF.</p> <p><b>Western Blot:</b> To detect Human G-CSF by Western Blot analysis this antibody can be used at a concentration of 0.1-0.2 µg/ml. Used in conjunction with compatible secondary reagents the detection limit for recombinant hG-CSF is 1.5-3.0 ng/lane, under <i>either reducing or non-reducing conditions</i>.</p> <p><b>Immunohistochemistry:</b> 0.25 µg/ml with an Overnight Incubation at 4°C. This antibody stained Formalin-Fixed, Paraffin-Embedded Sections of Human angiosarcoma. An HRP-labeled polymer detection system was used with a DAB Chromogen. Heat induced antigen retrieval with a pH 6.0 Sodium Citrate buffer is recommended.</p>
Reactivity:	Human
Host:	Rabbit
Clonality:	Polyclonal
Immunogen:	Highly purified E.Coli derived recombinant Human G-CSF ( <i>Cat.-No</i> PA060).
Specificity:	Recognizes Human Granulocyte Colony Stimulating Factor (G-CSF). Other species not tested.
Formulation:	PBS, pH 7.2 without preservatives. State: Aff - Purified State: Lyophilized (Sterile filtered) purified Ig fraction
Reconstitution Method:	Restore in sterile water to a concentration of 0.1-1.0 mg/ml.
Purification:	Affinity Chromatography employing immobilized hG-CSF matrix.
Conjugation:	Unconjugated



[View online »](#)

<b>Storage:</b>	Prior to reconstitution store at 2-8°C. Following reconstitution store undiluted at 2-8°C for one month or (in aliquots) at -20°C for longer. Avoid repeated freezing and thawing.
<b>Stability:</b>	Shelf life: one year from despatch.
<b>Gene Name:</b>	colony stimulating factor 3
<b>Database Link:</b>	<a href="#">Entrez Gene 1440 Human P09919</a>
<b>Background:</b>	Granulocyte Colony Stimulating Factor (G-CSF) a cytokine that controls the production, differentiation, and function of granulocytes. It is a potent stimulator of bone marrow cells especially those of neutrophil lineage. In addition, G-CSF can enhance the survival and activate the immunological functions of mature neutrophils.
<b>Synonyms:</b>	CSF3, GCSF, Pluripoietin, C17orf33
<b>Note:</b>	Centrifuge vial prior to opening.

**Product images:**

Immunohistochemistry: This G-CSF antibody stained formalin-fixed, paraffin-embedded sections of human angiosarcoma. The recommended concentration is 0.25 ug/mL with an overnight incubation at 4°C. An HRP-labeled polymer detection system was used with a DAB chromogen. Heat induced antigen retrieval with a pH 6.0 sodium citrate buffer is recommended.

