

Product datasheet for PH327035

MYL12B (NM_001144946) Human Mass Spec Standard

Product data:

Product Type:	Mass Spec Standards
Description:	MYL12B MS Standard C13 and N15-labeled recombinant protein (NP_001138418)
Species:	Human
Expression Host:	HEK293
Expression cDNA Clone or AA Sequence:	RC227035
Predicted MW:	17.6 kDa
Protein Sequence:	>RC227035 representing NM_001144946 Red=Cloning site Green=Tags(s) MSSMFAMFDQSQIQEFKEAFNMIDQNRDGFIDKEDLDHMLASLGKNPTDAYLDAMNEAPGPINFTMFLT MFGKELNGTDPEDEVIRNAFACFDEEATGTIQEDYLRELLTTMGDRFTDEEVDLYREAPIDKKGNFNIE FTRILKHGAKDKDD TRTRPLEQKLISEEDLAANDILDYKDDDDKV
Tag:	C-Myc/DDK
Purity:	> 80% as determined by SDS-PAGE and Coomassie blue staining
Concentration:	>0.05 µg/µL as determined by microplate BCA method
Labeling Method:	Labeled with [U- 13C6, 15N4]-L-Arginine and [U- 13C6, 15N2]-L-Lysine
Buffer:	25 mM Tris-HCl, 100 mM glycine, pH 7.3
Storage:	Store at -80°C. Avoid repeated freeze-thaw cycles.
Stability:	Stable for 3 months from receipt of products under proper storage and handling conditions.
RefSeq:	NP_001138418
RefSeq ORF:	462
Synonyms:	MLC-B; MRLC2
Locus ID:	103910
UniProt ID:	O14950
Cytogenetics:	18p11.31

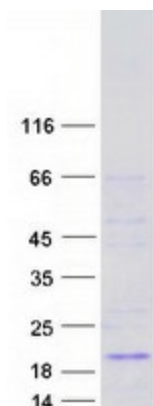


[View online »](#)

Summary: The activity of nonmuscle myosin II (see MYH9; MIM 160775) is regulated by phosphorylation of a regulatory light chain, such as MRLC2. This phosphorylation results in higher MgATPase activity and the assembly of myosin II filaments (Iwasaki et al., 2001 [PubMed 11942626]). [supplied by OMIM, Mar 2008]

Protein Pathways: Focal adhesion, Leukocyte transendothelial migration, Regulation of actin cytoskeleton, Tight junction

Product images:



Coomassie blue staining of purified MYL12B protein (Cat# [TP327035]). The protein was produced from HEK293T cells transfected with MYL12B cDNA clone (Cat# [RC227035]) using MegaTran 2.0 (Cat# [TT210002]).