

## Product datasheet for PH324906

### MAGEB1 (NM\_177404) Human Mass Spec Standard

#### Product data:

Product Type:	Mass Spec Standards
Description:	MAGEB1 MS Standard C13 and N15-labeled recombinant protein (NP_796379)
Species:	Human
Expression Host:	HEK293
Expression cDNA Clone or AA Sequence:	RC224906
Predicted MW:	39 kDa
Protein Sequence:	>Peptide sequence encoded by RC224906 Blue=ORF Red=Cloning site Green=Tag(s)  MPRGQKSKLRAREKRRKAREETQGLKVAHATAAEKEECPSSSPVLGDTPTSSPAAGIPQKPQGAPPTT AAAAVSCTESDEGAKCQGEENASFQATTSTESSVKDPVAWEAGMLMHFILRKYKMREPIMKADMLKVV DEKYKDHFEILNGASRRLELVGLDLKEDNPSGHTYTLVSKLNLTNDGNLSNDWDFPRNGLLMPLLGV IFLKGNSATEEEIWKFMNVLGAYDGEELIYGEPKRFITQDLVQEKYLYEQVPSNDPPRYQFLWGPRA YAETTKMKVLEFLAKMNGATPRDFPSHYEEALRDEEERAQVRSSVRARRTTATTFRARSRAPFSRSSH PM TRTRPLEQKLISEEDLAANDILDYKDDDDKV  Recombinant protein using RC224906 also available, <a href="#">TP324906</a>
Tag:	C-Myc/DDK
Purity:	> 80% as determined by SDS-PAGE and Coomassie blue staining
Concentration:	>0.05 µg/µL as determined by microplate BCA method
Labeling Method:	Labeled with [U- 13C6, 15N4]-L-Arginine and [U- 13C6, 15N2]-L-Lysine
Buffer:	25 mM Tris-HCl, 100 mM glycine, pH 7.3
Storage:	Store at -80°C. Avoid repeated freeze-thaw cycles.
Stability:	Stable for 3 months from receipt of products under proper storage and handling conditions.
RefSeq:	<a href="#">NP_796379</a>
RefSeq Size:	1708
RefSeq ORF:	1041
Synonyms:	CT3.1; DAM10; MAGE-Xp; MAGEL1

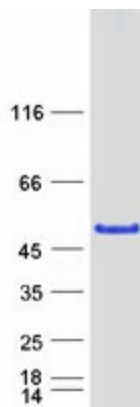


[View online »](#)

Locus ID: 4112  
UniProt ID: [P43366](#)  
Cytogenetics: Xp21.2

**Summary:** This gene is a member of the MAGEB gene family. The members of this family have their entire coding sequences located in the last exon, and the encoded proteins show 50 to 68% sequence identity to each other. The promoters and first exons of the MAGEB genes show considerable variability, suggesting that the existence of this gene family enables the same function to be expressed under different transcriptional controls. This gene is localized in the DSS (dosage-sensitive sex reversal) critical region, and expressed in testis and in a significant fraction of tumors of various histological types. This gene and other MAGEB members are clustered on chromosome Xp22-p21. Multiple alternatively spliced transcript variants encoding the same protein have been found for this gene, however, the full length nature of some variants has not been defined. [provided by RefSeq, Jul 2008]

### Product images:



Coomassie blue staining of purified MAGEB1 protein (Cat# [TP324906]). The protein was produced from HEK293T cells transfected with MAGEB1 cDNA clone (Cat# [RC224906]) using MegaTran 2.0 (Cat# [TT210002]).