

Product datasheet for PH322697

KRAS (NM_033360) Human Mass Spec Standard

Product data:

Product Type:	Mass Spec Standards
Description:	KRAS MS Standard C13 and N15-labeled recombinant protein (NP_203524)
Species:	Human
Expression Host:	HEK293
Expression cDNA Clone or AA Sequence:	RC222697
Predicted MW:	21.5 kDa
Protein Sequence:	>RC222697 representing NM_033360 Red=Cloning site Green=Tags(s) MTEYKLVVVGAGGVGKSALTIQLIQNHFVDEYDPTIEDSYRKQVVIDGETCLLDILDITAGQEEYSAMRDQ YMRTGEGFLCVFAINNTKSFEDIHHYREQIKRVKDSVPMVLVGNKCDLPSRTVDTKQAQDLARSYGIP FIETSAKTRQRVEDAFYTLVREIRQYRLKKISKEEKTGCVKIKKCIIM TRTRPLEQKLISEEDLAANDILDYKDDDDKV
Tag:	C-Myc/DDK
Purity:	> 80% as determined by SDS-PAGE and Coomassie blue staining
Concentration:	>0.05 µg/µL as determined by microplate BCA method
Labeling Method:	Labeled with [U- 13C6, 15N4]-L-Arginine and [U- 13C6, 15N2]-L-Lysine
Buffer:	25 mM Tris-HCl, 100 mM glycine, pH 7.3
Storage:	Store at -80°C. Avoid repeated freeze-thaw cycles.
Stability:	Stable for 3 months from receipt of products under proper storage and handling conditions.
RefSeq:	NP_203524
RefSeq Size:	5436
RefSeq ORF:	567
Synonyms:	C-K-RAS; c-Ki-ras2; CFC2; K-Ras; K-RAS2A; K-RAS2B; K-RAS4A; K-RAS4B; KI-RAS; KRAS1; KRAS2; NS; NS3; RALD; RASK2
Locus ID:	3845
UniProt ID:	P01116 , L7RSL8 , I1SRC5



[View online »](#)

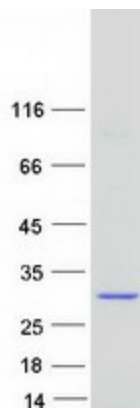
Cytogenetics: 12p12.1

Summary: This gene, a Kirsten ras oncogene homolog from the mammalian ras gene family, encodes a protein that is a member of the small GTPase superfamily. A single amino acid substitution is responsible for an activating mutation. The transforming protein that results is implicated in various malignancies, including lung adenocarcinoma, mucinous adenoma, ductal carcinoma of the pancreas and colorectal carcinoma. Alternative splicing leads to variants encoding two isoforms that differ in the C-terminal region. [provided by RefSeq, Jul 2008]

Protein Families: Druggable Genome

Protein Pathways: Acute myeloid leukemia, Axon guidance, B cell receptor signaling pathway, Bladder cancer, Chemokine signaling pathway, Chronic myeloid leukemia, Colorectal cancer, Dorso-ventral axis formation, Endometrial cancer, ErbB signaling pathway, Fc epsilon RI signaling pathway, Gap junction, Glioma, GnRH signaling pathway, Insulin signaling pathway, Long-term depression, Long-term potentiation, MAPK signaling pathway, Melanogenesis, Melanoma, Natural killer cell mediated cytotoxicity, Neurotrophin signaling pathway, Non-small cell lung cancer, Pancreatic cancer, Pathways in cancer, Progesterone-mediated oocyte maturation, Prostate cancer, Regulation of actin cytoskeleton, Renal cell carcinoma, T cell receptor signaling pathway, Thyroid cancer, Tight junction, VEGF signaling pathway

Product images:



Coomassie blue staining of purified KRAS protein (Cat# [TP322697]). The protein was produced from HEK293T cells transfected with KRAS cDNA clone (Cat# [RC222697]) using MegaTran 2.0 (Cat# [TT210002]).