

## Product datasheet for PH321743

### CD11b (ITGAM) (NM\_000632) Human Mass Spec Standard

#### Product data:

Product Type:	Mass Spec Standards
Description:	ITGAM MS Standard C13 and N15-labeled recombinant protein (NP_000623)
Species:	Human
Expression Host:	HEK293
Expression cDNA Clone or AA Sequence:	RC221743
Predicted MW:	127.18 kDa
Protein Sequence:	>RC221743 representing NM_000632 Red=Cloning site Green=Tags(s)

MALRVLLLTALTLCHGFNLDTENAMTFQENARGFGQSVVQLQGSRVVVGAPQEIVAANQRGSLYQCDYST  
GSCEPIRLQVPVEAVNMSLGLSLAATTSPQLLACGPTVHQTCSENTYVKGLCFLFGSNLRQQPKFPEA  
LRGCPQEDSDIAFLIDGSGSIIIPHDFRRMKEFVSTVMEQLKKSSTLFLSMQYSEEFRIHFTFKEFQNNPN  
PRSLVKPITQLLGRHTATGIRKVVRELFNITNGARKNAFKILVVIDGGEKFGDPLGYEDVIPEADREGV  
IRYVIGVGDAFRSEKSRQELNTIASKPPRDHVFQVNNFEALKTIQNQLREKIFAIEGTQTGSSSSFEHEM  
SQEGFSAAITSNGLLSTVGSYDWAGGVFLYTSKEKSTFINMTRVDSMDNDAYLGYAAAIIILNRVQSLV  
LGAPRYQHIGLVAMFRQNTGMWESNANVKGQTIGAYFGASLCSVDVDSNGSTDLVLI GAPHYEQTGGGQ  
VSVCP LPRGRARWQCDAVLYGEQGPWGRFGAALTVLGDVNGDKLTDVAIGAPGEEDNRGAVYLFHGTSG  
SGI SPHSQRIAGSKLSPRLQYFGQSLSGQDLTMDGLVDLTVGAQGHVLLLLRSQPVLRVKAIMEFNP  
VARNVFECDQVVKGEAGEVVRVCLHVQKSTRDRLREGQIQSVVTYDLALDSGRPHSRVAFNETKNSTR  
QTQVLGLTQTCE TLKLQLPNCIEDPVSPIVLRLNFSLVGTPLSAFGNLRPVAEDAQR LFTALFPFEKNC  
GNDNICQDDL SITFSFMSLDCLVGGPREFNVTVVRNDGEDSYRTQVTFPPDLDSYRKVSTLQNRSQ  
RSWRLACESASSTEVS GALKSTSCSINHPIFPENSEVTFNITFDVDSKASLGNKLLLKANVTSENNMPRT  
NKTEFQLELPVKYAVYVMVVTSHGVSTKYLNF TASENTRVMSQHQYQVSNLQQRSLPISLVFLVPVRLNQT  
VIWDRPQVTFSENLSSTCHTKERLP SHSDFLAELRKAPVVNCSI AVCQRIQCDIPFFGIQE EFNATLKGN  
LSFDWYIKTSHNHLLIVSTAEILFND SVFTLLPGQGFVRSQTETKVEPFVFNPLPLIVGSSVGGLLLL  
ALITAALYKLGFFKRQYKDMMSEGGPPGAEPQ

TRTRPLEQKLISEEDLAANDILDYKDDDDKV

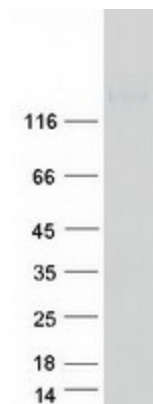
Tag:	C-Myc/DDK
Purity:	> 80% as determined by SDS-PAGE and Coomassie blue staining
Concentration:	>0.05 µg/µL as determined by microplate BCA method
Labeling Method:	Labeled with [U- <sup>13</sup> C <sub>6</sub> , <sup>15</sup> N <sub>4</sub> ]-L-Arginine and [U- <sup>13</sup> C <sub>6</sub> , <sup>15</sup> N <sub>2</sub> ]-L-Lysine
Buffer:	25 mM Tris-HCl, 100 mM glycine, pH 7.3



[View online »](#)

<b>Storage:</b>	Store at -80°C. Avoid repeated freeze-thaw cycles.
<b>Stability:</b>	Stable for 3 months from receipt of products under proper storage and handling conditions.
<b>RefSeq:</b>	<a href="#">NP_000623</a>
<b>RefSeq Size:</b>	4740
<b>RefSeq ORF:</b>	3456
<b>Synonyms:</b>	CD11B; CR3A; MAC-1; MAC1A; MO1A; SLEB6
<b>Locus ID:</b>	3684
<b>UniProt ID:</b>	<a href="#">P11215</a>
<b>Cytogenetics:</b>	16p11.2
<b>Summary:</b>	This gene encodes the integrin alpha M chain. Integrins are heterodimeric integral membrane proteins composed of an alpha chain and a beta chain. This I-domain containing alpha integrin combines with the beta 2 chain (ITGB2) to form a leukocyte-specific integrin referred to as macrophage receptor 1 ('Mac-1'), or inactivated-C3b (iC3b) receptor 3 ('CR3'). The alpha M beta 2 integrin is important in the adherence of neutrophils and monocytes to stimulated endothelium, and also in the phagocytosis of complement coated particles. Multiple transcript variants encoding different isoforms have been found for this gene. [provided by RefSeq, Mar 2009]
<b>Protein Families:</b>	Druggable Genome, ES Cell Differentiation/IPS, Transmembrane
<b>Protein Pathways:</b>	Cell adhesion molecules (CAMs), Hematopoietic cell lineage, Leukocyte transendothelial migration, Regulation of actin cytoskeleton

### Product images:



Coomassie blue staining of purified ITGAM protein (Cat# [TP321743]). The protein was produced from HEK293T cells transfected with ITGAM cDNA clone (Cat# [RC221743]) using MegaTran 2.0 (Cat# [TT210002]).