

Product datasheet for PH321580

CED6 (GULP1) (NM_016315) Human Mass Spec Standard

Product data:

Product Type:	Mass Spec Standards
Description:	GULP1 MS Standard C13 and N15-labeled recombinant protein (NP_057399)
Species:	Human
Expression Host:	HEK293
Expression cDNA Clone or AA Sequence:	RC221580
Predicted MW:	34.3 kDa
Protein Sequence:	>RC221580 representing NM_016315 Red =Cloning site Green =Tags(s) MNRAFSRKKDKTWMHTPEALSKHFIPYNAKFLGSTEVEQPKGTEVVRDAVRKLFARHIKSEGGKIPKV ELQISIIYGVKILEPKTKEVQHNCQLHRISFCADDKTDKRIFTFICKDSESNKHLCYVFDSEKCAEEITLT IGQAFDLAYRKFLSEGGKDVETRKQIAGLQKRIQDLETENMELKNKVQDLENQLRITQVSAPPAGSMTPK SPSTDIFDMIPFSPISHQSSMPTRNGTQPPPVPSRSTEIKRDLFGAEPDFPFNCGAADFPDIIQSKLDEM QEGFKMGLTLEGTVFCLDPLDSRC TRTRPLEQKLISEEDLAANDILDYKDDDDKV
Tag:	C-Myc/DDK
Purity:	> 80% as determined by SDS-PAGE and Coomassie blue staining
Concentration:	>0.05 µg/µL as determined by microplate BCA method
Labeling Method:	Labeled with [U- ¹³ C ₆ , ¹⁵ N ₄]-L-Arginine and [U- ¹³ C ₆ , ¹⁵ N ₂]-L-Lysine
Buffer:	25 mM Tris-HCl, 100 mM glycine, pH 7.3
Storage:	Store at -80°C. Avoid repeated freeze-thaw cycles.
Stability:	Stable for 3 months from receipt of products under proper storage and handling conditions.
RefSeq:	NP_057399
RefSeq Size:	3464
RefSeq ORF:	912
Synonyms:	CED-6; CED6; GULP
Locus ID:	51454



[View online »](#)

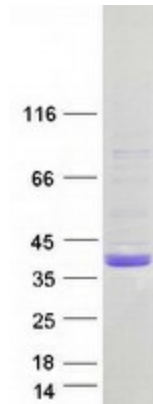
UniProt ID: [Q9UBP9](#)

Cytogenetics: 2q32.1-q32.2

Summary: The protein encoded by this gene is an adapter protein necessary for the engulfment of apoptotic cells by phagocytes. Several transcript variants, some protein coding and some thought not to be protein coding, have been found for this gene. [provided by RefSeq, Nov 2011]

Protein Families: Druggable Genome

Product images:



Coomassie blue staining of purified GULP1 protein (Cat# [TP321580]). The protein was produced from HEK293T cells transfected with GULP1 cDNA clone (Cat# [RC221580]) using MegaTran 2.0 (Cat# [TT210002]).