

Product datasheet for PH319082

Nucleolin (NCL) (NM_005381) Human Mass Spec Standard

Product data:

| | |
|---------------------------------------|--|
| Product Type: | Mass Spec Standards |
| Description: | NCL MS Standard C13 and N15-labeled recombinant protein (NP_005372) |
| Species: | Human |
| Expression Host: | HEK293 |
| Expression cDNA Clone or AA Sequence: | RC219082 |
| Predicted MW: | 76.4 kDa |
| Protein Sequence: | >RC219082 representing NM_005381 Red=Cloning site Green=Tags(s) |
| | MVKLAKAGKNQGDPPKMAPPKEVEEDSEDEEMSEDEEDDSSGEEVVIPQKKGKKAATSACKVVVSPTK KVAVATPAKKA AVTPGKKA AATPAKKT VTPAKAVTTPGKKGATPGKALVATPGKGA AIPAKGAKNGKNA KKEDSDEEEDDDSEDEEDDEDEDEDEDEIEPAAMKAAAAAPASEDEDEDEDEDEDDDDDEEDDSEEEA METTPAKGKKA AKVVPVKAKNVAE DEEEDDEDEDEDDDDDEDEDEDEEEEEEEEEEPVKEAPGKR KKEMAKQKAAPEAKKQKVEGTEPTTAFNLFVGNLNFNKSAPELKTGISDVF AKNDLAVVDVRIGMTRKFG YVDFESAEDLEKALEL TGLKVF GNEIKLEKPKGKDSKKERDARTLLAKNLPYKVTQDELKEVFEDAAEIR LVSKDGKSKGIAYIEFKTEADA EKTFFEEKQGT EIDGRSISLYYTGEKQGNQDYRGGKNSTWSGESKTLVL SNLSYSATEETLQEVFEKATFIKVPQNQNGKSKGYAFIEFASFEDA KEALNSCNKREIEGRAIRLELQGP RGSPNARSQPSKTLFVKGLSEDTTEETLKE SFDG SVRARIVTDRETGSSKGF GFVDFNSEEDAKAAKEAM EDGEIDGNKVTL DWAKPKGEGGF GGRGGGRGGF GGRGGGRGGF GGRGGGRGGF GGRGGFRGGFRGGGGGDH KPQGGKTKFE |
| | TRTRPLEQKLISEEDLAANDILDYKDDDDKV |
| Tag: | C-Myc/DDK |
| Purity: | > 80% as determined by SDS-PAGE and Coomassie blue staining |
| Concentration: | >0.05 µg/µL as determined by microplate BCA method |
| Labeling Method: | Labeled with [U- 13C6, 15N4]-L-Arginine and [U- 13C6, 15N2]-L-Lysine |
| Buffer: | 25 mM Tris-HCl, 100 mM glycine, pH 7.3 |
| Storage: | Store at -80°C. Avoid repeated freeze-thaw cycles. |
| Stability: | Stable for 3 months from receipt of products under proper storage and handling conditions. |
| RefSeq: | NP_005372 |



[View online »](#)

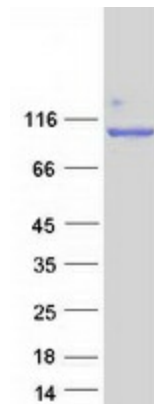
| | |
|---------------|---|
| RefSeq Size: | 2732 |
| RefSeq ORF: | 2130 |
| Synonyms: | C23; Nsr1 |
| Locus ID: | 4691 |
| UniProt ID: | P19338 , B3KM80 |
| Cytogenetics: | 2q37.1 |

Summary: Nucleolin (NCL), a eukaryotic nucleolar phosphoprotein, is involved in the synthesis and maturation of ribosomes. It is located mainly in dense fibrillar regions of the nucleolus. Human NCL gene consists of 14 exons with 13 introns and spans approximately 11kb. The intron 11 of the NCL gene encodes a small nucleolar RNA, termed U20. [provided by RefSeq, Jul 2008]

Protein Families: Druggable Genome, Stem cell - Pluripotency

Protein Pathways: Pathogenic Escherichia coli infection

Product images:



Coomassie blue staining of purified NCL protein (Cat# [TP319082]). The protein was produced from HEK293T cells transfected with NCL cDNA clone (Cat# [RC219082]) using MegaTran 2.0 (Cat# [TT210002]).