

## Product datasheet for PH317773

### Tau (MAPT) (NM\_016834) Human Mass Spec Standard

#### Product data:

Product Type:	Mass Spec Standards
Description:	MAPT MS Standard C13 and N15-labeled recombinant protein (NP_058518)
Species:	Human
Expression Host:	HEK293
Expression cDNA Clone or AA Sequence:	RC217773
Predicted MW:	39.8 kDa
Protein Sequence:	>RC217773 representing NM_016834 Red=Cloning site Green=Tags(s)  MAEPRQEFVEMEDHAGTYGLGDRKDQGGYTMHQDQEGDTDAGLKAE EAGIGDTPSLEDEAAGHVTQARMV SKSKDGTGSDDKKAKGADGKTKIATPRGAAPPQKQGANATRIPAKTPPAPKTPPSSGEPKSGDRSGYS SPGSPGTPGSRSRTPSLPTPPTREPKKVAVVRTPPKSPSSAKSRLQTAPVPMPLKKNVSKIGSTENLKH QPGGGKVQIINKKLDL SNVQSKCGSKDNIKHVPGGGSVQIVYKPVLD SKVTSKCGSLGNIHHKPGGGQVE VKSEKLDKDRVQSKIGSLDNI THVPGGGNKKIETHKLT FRENAKAKTDHGAEIVYKSPVVGDTSPRHL SNVSSTGSIDMVDSPQLATLADEV SASLAKQGL  TRTRPLEQKLI SEEDLAANDILDYKDDDDKV
Tag:	C-Myc/DDK
Purity:	> 80% as determined by SDS-PAGE and Coomassie blue staining
Concentration:	>0.05 µg/µL as determined by microplate BCA method
Labeling Method:	Labeled with [U- <sup>13</sup> C <sub>6</sub> , <sup>15</sup> N <sub>4</sub> ]-L-Arginine and [U- <sup>13</sup> C <sub>6</sub> , <sup>15</sup> N <sub>2</sub> ]-L-Lysine
Buffer:	25 mM Tris-HCl, 100 mM glycine, pH 7.3
Storage:	Store at -80°C. Avoid repeated freeze-thaw cycles.
Stability:	Stable for 3 months from receipt of products under proper storage and handling conditions.
RefSeq:	<a href="#">NP_058518</a>
RefSeq Size:	5557
RefSeq ORF:	1149
Synonyms:	DDPAC; FTDP-17; MAPTL; MSTD; MTBT1; MTBT2; PPND; PPP1R103; TAU; tau-40
Locus ID:	4137



[View online »](#)

UniProt ID: [P10636](#), [A0A024R9Y0](#)

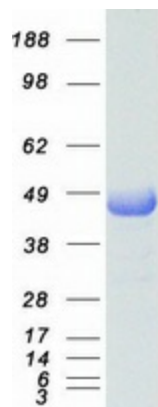
Cytogenetics: 17q21.31

**Summary:** This gene encodes the microtubule-associated protein tau (MAPT) whose transcript undergoes complex, regulated alternative splicing, giving rise to several mRNA species. MAPT transcripts are differentially expressed in the nervous system, depending on stage of neuronal maturation and neuron type. MAPT gene mutations have been associated with several neurodegenerative disorders such as Alzheimer's disease, Pick's disease, frontotemporal dementia, cortico-basal degeneration and progressive supranuclear palsy. [provided by RefSeq, Jul 2008]

**Protein Families:** Druggable Genome

**Protein Pathways:** Alzheimer's disease, MAPK signaling pathway

### Product images:



Coomassie blue staining of purified MAPT protein (Cat# [TP317773]). The protein was produced from HEK293T cells transfected with MAPT cDNA clone (Cat# [RC217773]) using MegaTran 2.0 (Cat# [TT210002]).