

Product datasheet for PH316151

Von Hippel Lindau (VHL) (NM_000551) Human Mass Spec Standard

Product data:

Product Type:	Mass Spec Standards
Description:	VHL MS Standard C13 and N15-labeled recombinant protein (NP_000542)
Species:	Human
Expression Host:	HEK293
Expression cDNA Clone or AA Sequence:	RC216151
Predicted MW:	24 kDa
Protein Sequence:	>RC216151 representing NM_000551 Red =Cloning site Green =Tags(s) MPRRAENWDEAEVGAEEAGVEEYGPPEEDGGEEESGAEESGPEESGPEELGAEEMEAGRPRPVLRVNSRE PSQVIFCNRSPRVLPVWLNFDGEPQPYPTLPPGTGRRIRHSYRGHLWLFRDAGTHDGLLVNQTELFVPSL NVDGQPIFANITLPVYTLKERCLQVVRSLVKPENYRRLDIVRSLYEDLEDHPNVQKDLERLTQERIAHQ MGD TRTRPLEQKLISEEDLAANDILDYKDDDDKV
Tag:	C-Myc/DDK
Purity:	> 80% as determined by SDS-PAGE and Coomassie blue staining
Concentration:	>0.05 µg/µL as determined by microplate BCA method
Labeling Method:	Labeled with [U- ¹³ C ₆ , ¹⁵ N ₄]-L-Arginine and [U- ¹³ C ₆ , ¹⁵ N ₂]-L-Lysine
Buffer:	25 mM Tris-HCl, 100 mM glycine, pH 7.3
Storage:	Store at -80°C. Avoid repeated freeze-thaw cycles.
Stability:	Stable for 3 months from receipt of products under proper storage and handling conditions.
RefSeq:	NP_000542
RefSeq Size:	2968
RefSeq ORF:	639
Synonyms:	HRCA1; pVHL; RCA1; VHL1
Locus ID:	7428
UniProt ID:	P40337 , A0A024R2F2



[View online »](#)

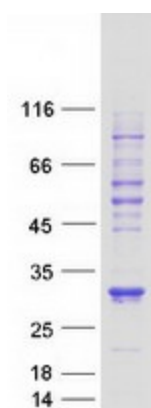
Cytogenetics: 3p25.3

Summary: Von Hippel-Lindau syndrome (VHL) is a dominantly inherited familial cancer syndrome predisposing to a variety of malignant and benign tumors. A germline mutation of this gene is the basis of familial inheritance of VHL syndrome. The protein encoded by this gene is a component of the protein complex that includes elongin B, elongin C, and cullin-2, and possesses ubiquitin ligase E3 activity. This protein is involved in the ubiquitination and degradation of hypoxia-inducible-factor (HIF), which is a transcription factor that plays a central role in the regulation of gene expression by oxygen. RNA polymerase II subunit POLR2G/RPB7 is also reported to be a target of this protein. Alternatively spliced transcript variants encoding distinct isoforms have been observed. [provided by RefSeq, Jul 2008]

Protein Families: Druggable Genome, Transcription Factors

Protein Pathways: Pathways in cancer, Renal cell carcinoma, Ubiquitin mediated proteolysis

Product images:



Coomassie blue staining of purified VHL protein (Cat# [TP316151]). The protein was produced from HEK293T cells transfected with VHL cDNA clone (Cat# [RC216151]) using MegaTran 2.0 (Cat# [TT210002]).