

Product datasheet for PH315247

Integrin beta 1 (ITGB1) (NM_133376) Human Mass Spec Standard

Product data:

Product Type:	Mass Spec Standards
Description:	ITGB1 MS Standard C13 and N15-labeled recombinant protein (NP_596867)
Species:	Human
Expression Host:	HEK293
Expression cDNA Clone or AA Sequence:	RC215247
Predicted MW:	88.4 kDa
Protein Sequence:	>RC215247 protein sequence Red=Cloning site Green=Tags(s)

MNLQPIFWIGLISVCCVFAQTDENRCLKANAKSCGECIQAGPNCGWCTNSTFLQEGMPTSARCDLLEAL
KKKGCPPDDIENPRGSKDIKKNKVTNRSGTAEKLKPEDITQIQPQQLVLRRLSGEPQTFTLKFKRAED
YPIDLYLMDLSYSMKDDLENVKSLGTDLMNEMRRITSDFRIGFGSFVEKTVMPYISTTPAKLRNPCTSE
QNCTSPFSYKNVLSLTNKGEVFNELVGKQRISGNLDSPEGGFDAIMQVAVCGSLIGWRNVTRLLVFSTDA
GFHFAGDGKLGIVLPNDGQCHLENNMYTMSHYDYPSIAHLVQKLSENNIQTIFAVTEEFQPVYKELKN
LIPKSAVGTLSANSSNVIQLIIDAYNSLSSEVILENGKLESEGVTISYKSYCKNGVNGTGNGRKCNSISI
GDEVQFEISITSNKCPKKDSDFKIRPLGFTEEEVILQYICECECQSEGIPESPKCHEGNGTFECGACR
CNEGRVGRHCECSTDEVNSEDMDAYCRKENSSEICSNNGECVCGQVCVCRKRDNTNEIYSGKFCECDNFNC
DRSNGLICGGNGVCKCRVCECNPNYTGSAACDSLDTSTCEASNGQICNGRIGICECGVCKCTDPKFQGTCT
EMCQTCLGVCAEHKECVQCRAFNKGEKKTCTQECYFNITKVESRDKLPQVQPDVPSHCKEKDVEDDCW
FYFTYSVNGNNEVMHVVENPECPGPDIIPIVAGVVAGIVLIGLALLLIWKLMI IHDRREFAKFEKEK
MNAKWDTGENPIYKSAVTTVVNPKYEGK

TRTRPLEQKLI SEEDLAANDILDYKDDDDKV

Tag:	C-Myc/DDK
Purity:	> 80% as determined by SDS-PAGE and Coomassie blue staining
Concentration:	>0.05 µg/µL as determined by microplate BCA method
Labeling Method:	Labeled with [U- ¹³ C ₆ , ¹⁵ N ₄]-L-Arginine and [U- ¹³ C ₆ , ¹⁵ N ₂]-L-Lysine
Buffer:	25 mM Tris-HCl, 100 mM glycine, pH 7.3
Storage:	Store at -80°C. Avoid repeated freeze-thaw cycles.
Stability:	Stable for 3 months from receipt of products under proper storage and handling conditions.
RefSeq:	NP_596867



[View online »](#)

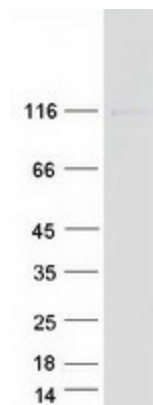
RefSeq Size:	3794
RefSeq ORF:	2394
Synonyms:	CD29; FNRB; GPIIA; MDF2; MSK12; VLA-BETA; VLAB
Locus ID:	3688
UniProt ID:	P05556
Cytogenetics:	10p11.22

Summary: Integrins are heterodimeric proteins made up of alpha and beta subunits. At least 18 alpha and 8 beta subunits have been described in mammals. Integrin family members are membrane receptors involved in cell adhesion and recognition in a variety of processes including embryogenesis, hemostasis, tissue repair, immune response and metastatic diffusion of tumor cells. This gene encodes a beta subunit. Multiple alternatively spliced transcript variants which encode different protein isoforms have been found for this gene. [provided by RefSeq, Jul 2008]

Protein Families: Druggable Genome, ES Cell Differentiation/IPS, Transmembrane

Protein Pathways: Arrhythmogenic right ventricular cardiomyopathy (ARVC), Axon guidance, Cell adhesion molecules (CAMs), Dilated cardiomyopathy, ECM-receptor interaction, Focal adhesion, Hypertrophic cardiomyopathy (HCM), Leukocyte transendothelial migration, Pathogenic Escherichia coli infection, Pathways in cancer, Regulation of actin cytoskeleton, Small cell lung cancer

Product images:



Coomassie blue staining of purified ITGB1 protein (Cat# [TP315247]). The protein was produced from HEK293T cells transfected with ITGB1 cDNA clone (Cat# [RC215247]) using MegaTran 2.0 (Cat# [TT210002]).