

Product datasheet for PH313318

NY-ESO-1 (CTAG1B) (NM_001327) Human Mass Spec Standard

Product data:

Product Type:	Mass Spec Standards
Description:	CTAG1B (NY-ESO-1) MS Standard C13 and N15-labeled recombinant protein (NP_001318)
Species:	Human
Expression Host:	HEK293
Expression cDNA Clone or AA Sequence:	RC213318
Predicted MW:	17.8 kDa
Protein Sequence:	>RC213318 representing NM_001327 Red=Cloning site Green=Tags(s) MQAEGRGTGGSTGDADGPGGPGIPDGPNGAGGPEAGATGGRGPRGAGAARASGPGGGAPRGPHGGAAS GLNGCCRCGARGPESRLLLEFYLAMPFATPMEAELARRSLAQDAPPLPVPGVLLKEFTVSGNILTIRLTAA DHRQLQLSISSCLQQLSLLMWITQCFLPVFLAQPPSGQRR TRTRPLEQKLI SEEDLAANDILDYKDDDDKV
Tag:	C-Myc/DDK
Purity:	> 80% as determined by SDS-PAGE and Coomassie blue staining
Concentration:	>0.05 µg/µL as determined by microplate BCA method
Labeling Method:	Labeled with [U- ¹³ C ₆ , ¹⁵ N ₄]-L-Arginine and [U- ¹³ C ₆ , ¹⁵ N ₂]-L-Lysine
Buffer:	25 mM Tris-HCl, 100 mM glycine, pH 7.3
Storage:	Store at -80°C. Avoid repeated freeze-thaw cycles.
Stability:	Stable for 3 months from receipt of products under proper storage and handling conditions.
RefSeq:	NP_001318
RefSeq Size:	806
RefSeq ORF:	540
Synonyms:	CT6.1; CTAG; CTAG1; ESO1; LAGE-2; LAGE2B; NY-ESO-1
Locus ID:	1485
UniProt ID:	P78358



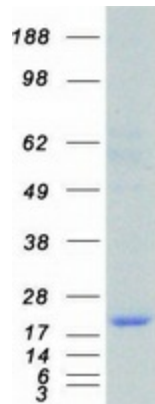
[View online »](#)

Cytogenetics: Xq28

Summary: The protein encoded by this gene is an antigen that is overexpressed in many cancers but that is also expressed in normal testis. This gene is found in a duplicated region of the X-chromosome and therefore has a neighboring gene of identical sequence. [provided by RefSeq, Jan 2012]

Protein Families: Druggable Genome

Product images:



Coomassie blue staining of purified CTAG1B protein (Cat# [TP313318]). The protein was produced from HEK293T cells transfected with CTAG1B cDNA clone (Cat# [RC213318]) using MegaTran 2.0 (Cat# [TT210002]).