

Product datasheet for PH311875

Clusterin (CLU) (NM_001831) Human Mass Spec Standard

Product data:

Product Type:	Mass Spec Standards
Description:	CLU MS Standard C13 and N15-labeled recombinant protein (NP_001822)
Species:	Human
Expression Host:	HEK293
Expression cDNA Clone or AA Sequence:	RC211875
Predicted MW:	57.7 kDa
Protein Sequence:	>RC211875 representing NM_001831 Red=Cloning site Green=Tags(s) MQVCSQPQRGCVREQSAINTAPPSAHNAASPGGARGHRVPLTEACKDSRIGGMMKTLFFFVGLLLTWESG QVLGDQTVSDNELQEMSNQGSKYVYKEIQNAVNGVKQIKTLIEKTNEERKTLFSNLEEAKKKKEDALNET RESETKLKEIPGVCNETMMALWEECKPCLKQTCMKFYARVCRSGSLVGRQLEEFLNQSSPFYFWMNGDR IDSLELNDRQQTHMLDVMQDHFSSRASSI IDELFQDRFFTREPDQTYHYLPSLPHRRPHFFPKSRIVRS LMPFSPYEPLNFHAMFQPFLEMIHEAQQAMDIFHSPAFQHPPTFIREGDDRTVCREIRHNSTGCLRM KDQCDKCREILSVCSTNNPSQAKLRRELDLQVAERL TRKYNELLKSYQWKMLNTSSLLEQLNEQFNW VSRLANLTQGEDQYYLRVTTVASHTSDSDVPSGVTEVVVKLFDSDPITVTPVEVSRKNPKFMETVAEKA LQEYRKKHREE SGPTRRRLEQKLI SEEDLAANDILDYKDDDDKV
Tag:	C-Myc/DDK
Purity:	> 80% as determined by SDS-PAGE and Coomassie blue staining
Concentration:	>0.05 µg/µL as determined by microplate BCA method
Labeling Method:	Labeled with [U- 13C6, 15N4]-L-Arginine and [U- 13C6, 15N2]-L-Lysine
Buffer:	25 mM Tris-HCl, 100 mM glycine, pH 7.3
Storage:	Store at -80°C. Avoid repeated freeze-thaw cycles.
Stability:	Stable for 3 months from receipt of products under proper storage and handling conditions.
RefSeq:	<u>NP_001822</u>
RefSeq Size:	2859
RefSeq ORF:	1503



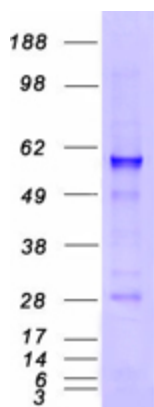
[View online »](#)

Synonyms: AAG4; APO-J; APOJ; CLI; CLU1; CLU2; KUB1; NA1/NA2; SGP-2; SGP2; SP-40; TRPM-2; TRPM2
Locus ID: 1191
UniProt ID: [P10909](#)
Cytogenetics: 8p21.1

Summary: The protein encoded by this gene is a secreted chaperone that can under some stress conditions also be found in the cell cytosol. It has been suggested to be involved in several basic biological events such as cell death, tumor progression, and neurodegenerative disorders. Alternate splicing results in both coding and non-coding variants.[provided by RefSeq, May 2011]

Protein Families: Druggable Genome, Secreted Protein

Product images:



Coomassie blue staining of purified CLU protein (Cat# [TP311875]). The protein was produced from HEK293T cells transfected with CLU cDNA clone (Cat# [RC211875]) using MegaTran 2.0 (Cat# [TT210002]).