

## Product datasheet for PH310961

### CD10 (MME) (NM\_007288) Human Mass Spec Standard

#### Product data:

Product Type:	Mass Spec Standards
Description:	MME MS Standard C13 and N15-labeled recombinant protein (NP_009219)
Species:	Human
Expression Host:	HEK293
Expression cDNA Clone or AA Sequence:	RC210961
Predicted MW:	85.5 kDa
Protein Sequence:	>RC210961 protein sequence Red=Cloning site Green=Tags(s)
	<p>MGKSESQMDITDINTPKPKKKQRWTPLEISLSVLVLLLTIIAVTMIALYATYDDGICKSSDCIKSAARLI QNM DATTEPCTDFFKYACGGWLKRNVIPETSSRYGNFDILRDELEVVLKDVLPQPKTEDIVAVQKAKALY RSCINESAIDSRGGPELLKLLPDIYGWPVATENWEQKYGASWTAEKAIQAQLNSKYGKKVLINLFGTDDK NSVNHVIHIDQPRLGLPSRDYECTGIYKEACTAYVDFMISVARLIRQEERLPIDENQLALEMKNVMELE KEIANATAKPEDRNDPMLLYNKMTLAQIQNNSLEINGKPF SWLNFTNEIMSTVNISITNEEDVVVYAPE YLTCLKPILTKYSARDLQNLMSWRFIMDLVSSLRRTYKESRNAFRKALYGTTSETATWRCANYVNGNME NAVGRLYVEAAFAGESKHVVEDLIAQIREVFIQTLDDL TWMDAETKKRAEEKALAIKERIGYPDDIVSND NKLNNEYLELNYKEDEYFENIIQNLKFSQSKQLKKLREKVDKDEWISGAAVVNAFYSSGRNQIVFPAGIL QPPFFSAQQSNSLNYGGIGMVI GHEITHGFDDNGRNFNKDGDLDVWWTQQSASNFKEQSQCMVYQYGNFS WDLAGGQHLNGINTLGENIADNGGLGQAYRAYQNYIKKNGEEKLLPGLDLNHNKQLFFLNFAQVWCGTYRP EYAVNSIKTDVHSPGNFRIIGTLQNSAEFSEAFHCRKNSYMNPEKKCRVW</p> <p>TRTRPLEQKLI SEEDLAANDILDYKDDDDKV</p>
Tag:	C-Myc/DDK
Purity:	> 80% as determined by SDS-PAGE and Coomassie blue staining
Concentration:	>0.05 µg/µL as determined by microplate BCA method
Labeling Method:	Labeled with [U- 13C6, 15N4]-L-Arginine and [U- 13C6, 15N2]-L-Lysine
Buffer:	25 mM Tris-HCl, 100 mM glycine, pH 7.3
Storage:	Store at -80°C. Avoid repeated freeze-thaw cycles.
Stability:	Stable for 3 months from receipt of products under proper storage and handling conditions.
RefSeq:	<u><a href="#">NP_009219</a></u>



[View online »](#)

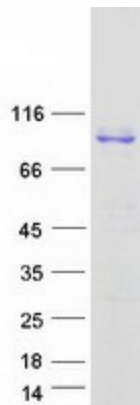
RefSeq Size:	5665
RefSeq ORF:	2250
Synonyms:	CALLA; CD10; CMT2T; NEP; SCA43; SFE
Locus ID:	4311
UniProt ID:	<a href="#">P08473</a>
Cytogenetics:	3q25.2

**Summary:** The protein encoded by this gene is a type II transmembrane glycoprotein and a common acute lymphocytic leukemia antigen that is an important cell surface marker in the diagnosis of human acute lymphocytic leukemia (ALL). The encoded protein is present on leukemic cells of pre-B phenotype, which represent 85% of cases of ALL. This protein is not restricted to leukemic cells, however, and is found on a variety of normal tissues. The protein is a neutral endopeptidase that cleaves peptides at the amino side of hydrophobic residues and inactivates several peptide hormones including glucagon, enkephalins, substance P, neurotensin, oxytocin, and bradykinin. [provided by RefSeq, Aug 2017]

**Protein Families:** Druggable Genome, Protease, Transmembrane

**Protein Pathways:** Alzheimer's disease, Hematopoietic cell lineage, Renin-angiotensin system

### Product images:



Coomassie blue staining of purified MME protein (Cat# [TP310961]). The protein was produced from HEK293T cells transfected with MME cDNA clone (Cat# [RC210961]) using MegaTran 2.0 (Cat# [TT210002]).