

Product datasheet for PH309707

Cytokeratin 19 (KRT19) (NM_002276) Human Mass Spec Standard

Product data:

Product Type:	Mass Spec Standards
Description:	KRT19 MS Standard C13 and N15-labeled recombinant protein (NP_002267)
Species:	Human
Expression Host:	HEK293
Expression cDNA Clone or AA Sequence:	RC209707
Predicted MW:	43.9 kDa
Protein Sequence:	>RC209707 representing NM_002276 Red=Cloning site Green=Tags(s) MTSYSYRQSSATSSFGLGGSVRFPGVAFRAPSIHGGSGGRGVSVSARFVSSSSSGGYGGYGGVLT ASDGLLAGNEKLTMQNLNDRLASYLDKVRALEAANGELEVKIRDWYQKQGPSPSRDYSHYYTTIQDLRDK ILGATIENSRIVLQIDNARLAADDFRTKFETEQUALRMSVEADINGLRRVLDLARTDLEMQIEGLKEE LAYLKKNHEEEISTLRGQVGGQVSVEVDSAPGTDLAKILSDMRSQYEVMAEQNRKDAEAWFTSRTEELNR EVAGHTEQLQMSRSEVTDLRRTLQGLEIELQSQLSMKAALEDTLAETEARFGAQLAHIQALISGIEAQLG DVRADSERQNQEYQRLMDIKSRLEQEIATYRSLLEGQEDHYNNLSASKVL TRTRPLEQKLI SEEDLAANDILDYKDDDDKV
Tag:	C-Myc/DDK
Purity:	> 80% as determined by SDS-PAGE and Coomassie blue staining
Concentration:	>0.05 µg/µL as determined by microplate BCA method
Labeling Method:	Labeled with [U- ¹³ C ₆ , ¹⁵ N ₄]-L-Arginine and [U- ¹³ C ₆ , ¹⁵ N ₂]-L-Lysine
Buffer:	25 mM Tris-HCl, 100 mM glycine, pH 7.3
Storage:	Store at -80°C. Avoid repeated freeze-thaw cycles.
Stability:	Stable for 3 months from receipt of products under proper storage and handling conditions.
RefSeq:	<u>NP_002267</u>
RefSeq Size:	1490
RefSeq ORF:	1200
Synonyms:	CK19; K1CS; K19
Locus ID:	3880



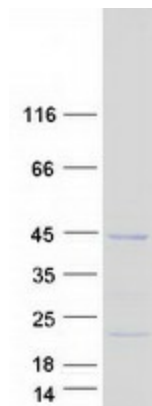
[View online »](#)

UniProt ID: [P08727](#)

Cytogenetics: 17q21.2

Summary: The protein encoded by this gene is a member of the keratin family. The keratins are intermediate filament proteins responsible for the structural integrity of epithelial cells and are subdivided into cytokeratins and hair keratins. The type I cytokeratins consist of acidic proteins which are arranged in pairs of heterotypic keratin chains. Unlike its related family members, this smallest known acidic cytokeratin is not paired with a basic cytokeratin in epithelial cells. It is specifically expressed in the periderm, the transiently superficial layer that envelopes the developing epidermis. The type I cytokeratins are clustered in a region of chromosome 17q12-q21. [provided by RefSeq, Jul 2008]

Product images:



Coomassie blue staining of purified KRT19 protein (Cat# [TP309707]). The protein was produced from HEK293T cells transfected with KRT19 cDNA clone (Cat# [RC209707]) using MegaTran 2.0 (Cat# [TT210002]).