

Product datasheet for PH306582

Protein C (PROC) (NM_000312) Human Mass Spec Standard

Product data:

Product Type:	Mass Spec Standards
Description:	PROC MS Standard C13 and N15-labeled recombinant protein (NP_000303)
Species:	Human
Expression Host:	HEK293
Expression cDNA Clone or AA Sequence:	RC206582
Predicted MW:	52.1 kDa
Protein Sequence:	>RC206582 protein sequence Red=Cloning site Green=Tags(s)
	MWQLTSLLLFVATWGISGTPAPLDSVVFSSSERAHQVLRIRKRANSFLEELRHSSLERECIEEICDFEAK EIFQNVDTLAFWSKHVDGQCLVPLEHPCASLCCGHGTCIDGIGSFSCDCRSGWEGRFQREVSFLNC SLDNGGCTHYCLEEVGWRRCSCAPGYKLGDDLQCHPAVKFPCGRPWKMEKKRSHLKRDTEDQEDQVDP RLIDGKMTRRGDSPWQVLLDSKKKLACGAVLIHPSWVLTAAHCMDESKLLVRLGEYDLRRWEKWELDL DIKEVFPVHPNYSKSTTDNDIALHLAQPATLSQTIVPICLPDGLAERELNQAQQLVTGWGYHSSREK EAKRNRTFVLNFIKIPVVPVPHNECSEVMSNMVSENMLCAGILGDRQDACEGDSGGPMVASFHGTWFLVGLV SWGEGCLLHNYGVYTKVSRYLWDWIHGHIRDKEAPQKSWAP
	TRTRPLEQKLISEEDLAANDILDYKDDDDKV
Tag:	C-Myc/DDK
Purity:	> 80% as determined by SDS-PAGE and Coomassie blue staining
Concentration:	>0.05 µg/µL as determined by microplate BCA method
Labeling Method:	Labeled with [U- ¹³ C ₆ , ¹⁵ N ₄]-L-Arginine and [U- ¹³ C ₆ , ¹⁵ N ₂]-L-Lysine
Buffer:	25 mM Tris-HCl, 100 mM glycine, pH 7.3
Storage:	Store at -80°C. Avoid repeated freeze-thaw cycles.
Stability:	Stable for 3 months from receipt of products under proper storage and handling conditions.
RefSeq:	<u>NP_000303</u>
RefSeq Size:	1790
RefSeq ORF:	1383
Synonyms:	APC; PC; PROC1; THPH3; THPH4



[View online »](#)

Locus ID: 5624

UniProt ID: [P04070](#)

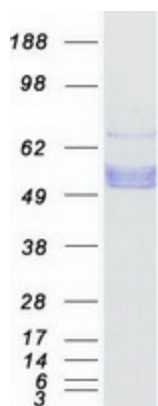
Cytogenetics: 2q14.3

Summary: This gene encodes a vitamin K-dependent plasma glycoprotein. The encoded protein is cleaved to its activated form by the thrombin-thrombomodulin complex. This activated form contains a serine protease domain and functions in degradation of the activated forms of coagulation factors V and VIII. Mutations in this gene have been associated with thrombophilia due to protein C deficiency, neonatal purpura fulminans, and recurrent venous thrombosis.[provided by RefSeq, Dec 2009]

Protein Families: Druggable Genome, Protease

Protein Pathways: Complement and coagulation cascades

Product images:



Coomassie blue staining of purified PROC protein (Cat# [TP306582]). The protein was produced from HEK293T cells transfected with PROC cDNA clone (Cat# [RC206582]) using MegaTran 2.0 (Cat# [TT210002]).