

## Product datasheet for PH306135

### PLBD2 (NM\_173542) Human Mass Spec Standard

#### Product data:

Product Type:	Mass Spec Standards
Description:	PLBD2 MS Standard C13 and N15-labeled recombinant protein (NP_775813)
Species:	Human
Expression Host:	HEK293
Expression cDNA Clone or AA Sequence:	RC206135
Predicted MW:	65.5 kDa
Protein Sequence:	>RC206135 protein sequence Red=Cloning site Green=Tags(s)

MVGQMYCYPGSHLARALTRALALALVLLVLPFLSGLAGAIAPGGRWARDGQVPPASRSRSVLLDVSA  
GQLLMVDGRHPDAVAVANLTNAIRETGWAFLELGTSGQYNDLQAYAAGVVEAAVSEELIYMHWMTVVN  
YCGPFYEYGYCERLKSFLLEANLEWMQEEMESNPDSPIYWHQVRLTLLQLKGLSDSYEGRVSFPAGKFTIK  
PLGFLLQLSGDLEDLELALNKTIKPSLGSAGSALIKLLPGQSDLLVAHNTWNNYQHMLRVIKYYWLQ  
FREGPWGDYPLVPGNKLVFSSYPGTIFSCDDFYILGSLVTLETTIGNKNPALWKYVPRGCVLEWVRNI  
VANRLASDGATWADIFKRFNSGTYNQWMIVDYKAFIPGGPSPGSRVLTILEQIPGMVVVADKTSLEYQK  
TYWASYNIPSFETVFNASGLQALVAQYGDWFSYDGSRAQIFRRNQSLVQDMDSMVRMLRYNDFLHDPLS  
LCKACNPQPNGENAISARSDLNANGSYPFKALRQRSHGGIDVKVTSMSLARILSLLAASGPTWDQVPPF  
QWSTSPFSGLLHMGQPDWLKFAVKVSWD

TRTRPLEQKLISEEDLAANDILDYKDDDDKV

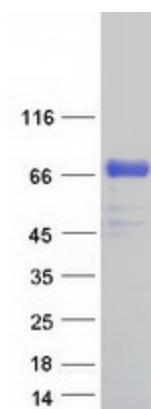
Tag:	C-Myc/DDK
Purity:	> 80% as determined by SDS-PAGE and Coomassie blue staining
Concentration:	>0.05 µg/µL as determined by microplate BCA method
Labeling Method:	Labeled with [U- <sup>13</sup> C <sub>6</sub> , <sup>15</sup> N <sub>4</sub> ]-L-Arginine and [U- <sup>13</sup> C <sub>6</sub> , <sup>15</sup> N <sub>2</sub> ]-L-Lysine
Buffer:	25 mM Tris-HCl, 100 mM glycine, pH 7.3
Storage:	Store at -80°C. Avoid repeated freeze-thaw cycles.
Stability:	Stable for 3 months from receipt of products under proper storage and handling conditions.
RefSeq:	<a href="#">NP_775813</a>
RefSeq Size:	2832
RefSeq ORF:	1767



[View online »](#)

Synonyms:	P76
Locus ID:	196463
UniProt ID:	<a href="#">Q8NHP8</a>
Cytogenetics:	12q24.13
Summary:	Putative phospholipase.[UniProtKB/Swiss-Prot Function]
Protein Families:	Transmembrane

### Product images:



Coomassie blue staining of purified PLBD2 protein (Cat# [TP306135]). The protein was produced from HEK293T cells transfected with PLBD2 cDNA clone (Cat# [RC206135]) using MegaTran 2.0 (Cat# [TT210002]).