

Product datasheet for PH302005

C1orf156 (METTL18) (NM_033418) Human Mass Spec Standard

Product data:

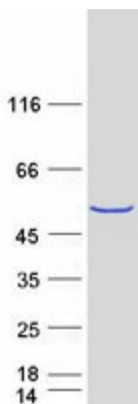
Product Type:	Mass Spec Standards
Description:	C1orf156 MS Standard C13 and N15-labeled recombinant protein (NP_219486)
Species:	Human
Expression Host:	HEK293
Expression cDNA Clone or AA Sequence:	RC202005
Predicted MW:	42.1 kDa
Protein Sequence:	>RC202005 protein sequence Red=Cloning site Green=Tags(s)
	MTFQFNFTIEDHLENELTPIRDGALTLDSSKELSVSESQKGEERDRKCSAEQFDLPQDHLWEHKSMENAA PSQD TDSPLSAASSRNLEPHGKQPSLRAAKEHAMPKDLKKMLNKVIETLPGFQHVKLSVVKTIILLKEN FPGENIVSKSFSHSDLITGVYEGGLKIWECTFDLLAYFTKAKVKFAGKKVLDLGCSSGLLGITAFKGGG KEIHFQDYNMVIDEVTLPNVVANSTLEDEENDVNEPDKRCKPKVTQLYKCRFFSGEWSEFCKLVLS EKL FVKYDLILTSETIYNPDYYSNLHQTFLLSKNGRVLLASKAHYFGVGGVHLFQKFVEERDVFKTR ILKIIDGLKRFIIIEITFKFPG
	TRTRPLEQKLI SEEDLAANDILDYKDDDDKV
Tag:	C-Myc/DDK
Purity:	> 80% as determined by SDS-PAGE and Coomassie blue staining
Concentration:	>0.05 µg/µL as determined by microplate BCA method
Labeling Method:	Labeled with [U- ¹³ C ₆ , ¹⁵ N ₄]-L-Arginine and [U- ¹³ C ₆ , ¹⁵ N ₂]-L-Lysine
Buffer:	25 mM Tris-HCl, 100 mM glycine, pH 7.3
Storage:	Store at -80°C. Avoid repeated freeze-thaw cycles.
Stability:	Stable for 3 months from receipt of products under proper storage and handling conditions.
RefSeq:	NP_219486
RefSeq Size:	1487
RefSeq ORF:	1116
Synonyms:	AsTP2; C1orf156; HPM1
Locus ID:	92342



[View online »](#)

UniProt ID: [O95568](#), [A0A024R8Y7](#)
Cytogenetics: 1q24.2
Summary: Probable histidine methyltransferase.[UniProtKB/Swiss-Prot Function]

Product images:



Coomassie blue staining of purified METTL18 protein (Cat# [TP302005]). The protein was produced from HEK293T cells transfected with METTL18 cDNA clone (Cat# [RC202005]) using MegaTran 2.0 (Cat# [TT210002]).