

Product datasheet for PH301989

EPCAM (NM_002354) Human Mass Spec Standard

Product data:

| | |
|---------------------------------------|---|
| Product Type: | Mass Spec Standards |
| Description: | EPCAM MS Standard C13 and N15-labeled recombinant protein (NP_002345) |
| Species: | Human |
| Expression Host: | HEK293 |
| Expression cDNA Clone or AA Sequence: | RC201989 |
| Predicted MW: | 34.9 kDa |
| Protein Sequence: | >RC201989 representing NM_002354 Red=Cloning site Green=Tags(s) MAPPQVLAFGLLLAAATATFAAAQEEVCENYKLVNCFVNNRQCQCTSVGAQNTVICSKLAAKCLVMK AEMNGSKLGRRAKPEGALQNDGLYDPCDESGLFKAKQCNGTSTCWCVNTAGVRRTDKDEITCSERV TYWIIIELKHKAREKPYDSKSLRTALQKEITTRYQLDPKFITSILYENNVITIDL VQNSSQKTQNDVDIA DVAYYFEKDVKGESLFHSHKMDLTVNGEQLDLDPGQTLIYYVDEKAPEFSMQGLKAGVIAIVVVVIAV AGIVVLVISRKKRMAKYEKAEIKEMGEMHRELNA TRRLEQKLISEEDLAANDILDYKDDDDKV |
| Tag: | C-Myc/DDK |
| Purity: | > 80% as determined by SDS-PAGE and Coomassie blue staining |
| Concentration: | >0.05 µg/µL as determined by microplate BCA method |
| Labeling Method: | Labeled with [U- ¹³ C ₆ , ¹⁵ N ₄]-L-Arginine and [U- ¹³ C ₆ , ¹⁵ N ₂]-L-Lysine |
| Buffer: | 25 mM Tris-HCl, 100 mM glycine, pH 7.3 |
| Storage: | Store at -80°C. Avoid repeated freeze-thaw cycles. |
| Stability: | Stable for 3 months from receipt of products under proper storage and handling conditions. |
| RefSeq: | NP_002345 |
| RefSeq Size: | 1528 |
| RefSeq ORF: | 942 |
| Synonyms: | DIAR5; EGP-2; EGP40; EGP314; ESA; HNPCC8; KS1/4; KSA; M4S1; MIC18; MK-1; TACSTD1; TROP1 |



[View online »](#)

Locus ID: 4072

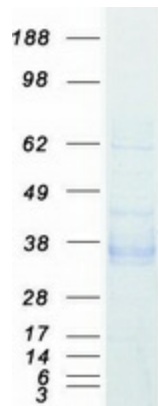
UniProt ID: [P16422](#)

Cytogenetics: 2p21

Summary: This gene encodes a carcinoma-associated antigen and is a member of a family that includes at least two type I membrane proteins. This antigen is expressed on most normal epithelial cells and gastrointestinal carcinomas and functions as a homotypic calcium-independent cell adhesion molecule. The antigen is being used as a target for immunotherapy treatment of human carcinomas. Mutations in this gene result in congenital tufting enteropathy. [provided by RefSeq, Dec 2008]

Protein Families: ES Cell Differentiation/IPS, Transmembrane

Product images:



Coomassie blue staining of purified EPCAM protein (Cat# [TP301989]). The protein was produced from HEK293T cells transfected with EPCAM cDNA clone (Cat# [RC201989]) using MegaTran 2.0 (Cat# [TT210002]).