

Product datasheet for PH301358

Calbindin (CALB1) (NM_004929) Human Mass Spec Standard

Product data:

Product Type:	Mass Spec Standards
Description:	CALB1 MS Standard C13 and N15-labeled recombinant protein (NP_004920)
Species:	Human
Expression Host:	HEK293
Expression cDNA Clone or AA Sequence:	RC201358
Predicted MW:	30 kDa
Protein Sequence:	>RC201358 protein sequence Red=Cloning site Green=Tags(s) MAESHLQSSSLITASQFFEIWLHFDADGSGYLEGKELQNLIQELQQARKKAGLELSPEMKTFVDQYGQRDD GKIGIVELAHVLPTEENFLLLFRQCQLKSCEEFMKTWRKYDTHSGF IETEELKNFLKDLLEKANKTVDD TKLAEYTDLMLKLFDSNNDGKLELTEMARLLPVQENFLLKFQGIKMGKEFNKAFELYDQDNGYIDENE LDALLKDLCEKNKQDLIDINNITTYKKNIMALSDGGKLYRTDLALILCAGDN TRTRPLEQKLI SEEDLAANDILDYKDDDDKV
Tag:	C-Myc/DDK
Purity:	> 80% as determined by SDS-PAGE and Coomassie blue staining
Concentration:	>0.05 µg/µL as determined by microplate BCA method
Labeling Method:	Labeled with [U- ¹³ C ₆ , ¹⁵ N ₄]-L-Arginine and [U- ¹³ C ₆ , ¹⁵ N ₂]-L-Lysine
Buffer:	25 mM Tris-HCl, 100 mM glycine, pH 7.3
Storage:	Store at -80°C. Avoid repeated freeze-thaw cycles.
Stability:	Stable for 3 months from receipt of products under proper storage and handling conditions.
RefSeq:	NP_004920
RefSeq Size:	2531
RefSeq ORF:	783
Synonyms:	CALB; D-28K
Locus ID:	793
UniProt ID:	P05937

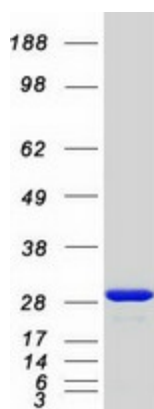


[View online »](#)

Cytogenetics: 8q21.3

Summary: The protein encoded by this gene is a member of the calcium-binding protein superfamily that includes calmodulin and troponin C. Originally described as a 27 kDa protein, it is now known to be a 28 kDa protein. It contains four active calcium-binding domains, and has two modified domains that are thought to have lost their calcium binding capability. This protein is thought to buffer entry of calcium upon stimulation of glutamate receptors. Depletion of this protein was noted in patients with Huntington disease. [provided by RefSeq, Jan 2015]

Product images:



Coomassie blue staining of purified CALB1 protein (Cat# [TP301358]). The protein was produced from HEK293T cells transfected with CALB1 cDNA clone (Cat# [RC201358]) using MegaTran 2.0 (Cat# [TT210002]).