

Product datasheet for PH301275

COMT (NM_000754) Human Mass Spec Standard

Product data:

Product Type:	Mass Spec Standards
Description:	COMT MS Standard C13 and N15-labeled recombinant protein (NP_000745)
Species:	Human
Expression Host:	HEK293
Expression cDNA Clone or AA Sequence:	RC201275
Predicted MW:	20 kDa
Protein Sequence:	>RC201275 protein sequence Red=Cloning site Green=Tags(s) MNVGDKKGKIVDAVIQEHQPSVLELGLAYCGYSAVRMARLLSPGARLITIEINPDCAAITQRMVDFAGMK DKVTLVVGASQDIIPQLKKKYDVTLDMVFLDHWKDRYLPDTLLLEECGLLRKGTVLLADNVICPGAPDF LAHVRGSSCFECTHYQSFLEYREVVDGLEKAIYKGPGEAGP TRTRPLEQKLI SEEDLAANDILDYKDDDDKV
Tag:	C-Myc/DDK
Purity:	> 80% as determined by SDS-PAGE and Coomassie blue staining
Concentration:	>0.05 µg/µL as determined by microplate BCA method
Labeling Method:	Labeled with [U- ¹³ C ₆ , ¹⁵ N ₄]-L-Arginine and [U- ¹³ C ₆ , ¹⁵ N ₂]-L-Lysine
Buffer:	25 mM Tris-HCl, 100 mM glycine, pH 7.3
Storage:	Store at -80°C. Avoid repeated freeze-thaw cycles.
Stability:	Stable for 3 months from receipt of products under proper storage and handling conditions.
RefSeq:	NP_000745
RefSeq Size:	2304
RefSeq ORF:	546
Synonyms:	HEL-S-98n
Locus ID:	1312
UniProt ID:	P21964 , A0A140VIG8



[View online »](#)

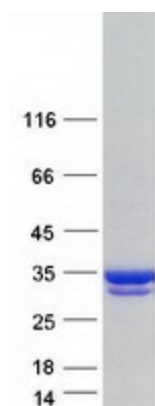
Cytogenetics: 22q11.21

Summary: Catechol-O-methyltransferase catalyzes the transfer of a methyl group from S-adenosylmethionine to catecholamines, including the neurotransmitters dopamine, epinephrine, and norepinephrine. This O-methylation results in one of the major degradative pathways of the catecholamine transmitters. In addition to its role in the metabolism of endogenous substances, COMT is important in the metabolism of catechol drugs used in the treatment of hypertension, asthma, and Parkinson disease. COMT is found in two forms in tissues, a soluble form (S-COMT) and a membrane-bound form (MB-COMT). The differences between S-COMT and MB-COMT reside within the N-termini. Several transcript variants are formed through the use of alternative translation initiation sites and promoters. [provided by RefSeq, Sep 2008]

Protein Families: Druggable Genome, Transmembrane

Protein Pathways: Metabolic pathways, Tyrosine metabolism

Product images:



Coomassie blue staining of purified COMT protein (Cat# [TP301275]). The protein was produced from HEK293T cells transfected with COMT cDNA clone (Cat# [RC201275]) using MegaTran 2.0 (Cat# [TT210002]).