

Product datasheet for PH301242

CD20 (MS4A1) (NM_021950) Human Mass Spec Standard

Product data:

Product Type:	Mass Spec Standards
Description:	MS4A1 MS Standard C13 and N15-labeled recombinant protein (NP_068769)
Species:	Human
Expression Host:	HEK293
Expression cDNA Clone or AA Sequence:	RC201242
Predicted MW:	33.1 kDa
Protein Sequence:	>RC201242 protein sequence Red=Cloning site Green=Tags(s) MTTPRNSVNGTFPAEPMKGPIAMQSGPKPLFRMSSLVGPTQSFFMRESKTLGAVQIMNGLFHIALGGLL MIPAGIYAPICVTWYPLWGGIMYIISGSLLAATEKNSRKCLVKGMIMNSLSLFAAISGMILSIMDILN IKISHFLKMESLNFIRAHTPYINIYNCEPANPSEKNPSTQYCYSIQSLFLGILSVMLIFAFFQELVIAG IVENEWKRTCSPKSNIVLLSAEEKKEQTIEIKEEVVGLTETSSQPKNEEDIEIPIQEEEEETE TNFP EPPQDQESSPIENDSSP TRTRPLEQKLI SEEDLAANDILDYKDDDDKV
Tag:	C-Myc/DDK
Purity:	> 80% as determined by SDS-PAGE and Coomassie blue staining
Concentration:	>0.05 µg/µL as determined by microplate BCA method
Labeling Method:	Labeled with [U- ¹³ C ₆ , ¹⁵ N ₄]-L-Arginine and [U- ¹³ C ₆ , ¹⁵ N ₂]-L-Lysine
Buffer:	25 mM Tris-HCl, 100 mM glycine, pH 7.3
Storage:	Store at -80°C. Avoid repeated freeze-thaw cycles.
Stability:	Stable for 3 months from receipt of products under proper storage and handling conditions.
RefSeq:	NP_068769
RefSeq Size:	3331
RefSeq ORF:	891
Synonyms:	B1; Bp35; CD20; CVID5; FMC7; LEU-16; MS4A2; S7
Locus ID:	931



[View online »](#)

UniProt ID: [P11836](#), [A0A024R507](#)

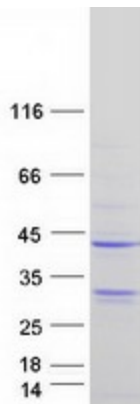
Cytogenetics: 11q12.2

Summary: This gene encodes a member of the membrane-spanning 4A gene family. Members of this nascent protein family are characterized by common structural features and similar intron/exon splice boundaries and display unique expression patterns among hematopoietic cells and nonlymphoid tissues. This gene encodes a B-lymphocyte surface molecule which plays a role in the development and differentiation of B-cells into plasma cells. This family member is localized to 11q12, among a cluster of family members. Alternative splicing of this gene results in two transcript variants which encode the same protein. [provided by RefSeq, Jul 2008]

Protein Families: Druggable Genome, Transmembrane

Protein Pathways: Hematopoietic cell lineage

Product images:



Coomassie blue staining of purified MS4A1 protein (Cat# [TP301242]). The protein was produced from HEK293T cells transfected with MS4A1 cDNA clone (Cat# [RC201242]) using MegaTran 2.0 (Cat# [TT210002]).