

Product datasheet for PH300428

Recoverin (RCVRN) (NM_002903) Human Mass Spec Standard

Product data:

Product Type:	Mass Spec Standards
Description:	RCVRN MS Standard C13 and N15-labeled recombinant protein (NP_002894)
Species:	Human
Expression Host:	HEK293
Expression cDNA Clone or AA Sequence:	RC200428
Predicted MW:	23.1 kDa
Protein Sequence:	>RC200428 protein sequence Red=Cloning site Green=Tags(s) MGNKSGALSKEILEELQLNFKFSEEELCSWYQSFLKDCPTGRITQQQFQSIYAKFFPDTDPKAYAQHVF RSFDSNLDGTLDFKEYVIALHMTTAGKTNQKLEWAFSLYDVDGNGTISKNEVLEIVMAIFKMITPEDVKL LPDDENTPEKRAEKIWKYFGKNDDDKLTEKEFIEGTLANKEILRLIQFEPQKVKEKMNA TRTRPLEQKLISEEDLAANDILDYKDDDDKV
Tag:	C-Myc/DDK
Purity:	> 80% as determined by SDS-PAGE and Coomassie blue staining
Concentration:	>0.05 µg/µL as determined by microplate BCA method
Labeling Method:	Labeled with [U- ¹³ C ₆ , ¹⁵ N ₄]-L-Arginine and [U- ¹³ C ₆ , ¹⁵ N ₂]-L-Lysine
Buffer:	25 mM Tris-HCl, 100 mM glycine, pH 7.3
Storage:	Store at -80°C. Avoid repeated freeze-thaw cycles.
Stability:	Stable for 3 months from receipt of products under proper storage and handling conditions.
RefSeq:	NP_002894
RefSeq Size:	1217
RefSeq ORF:	600
Synonyms:	RCV1
Locus ID:	5957
UniProt ID:	P35243

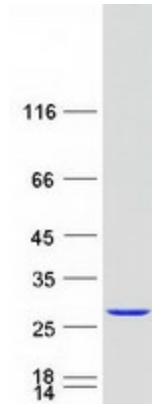


[View online »](#)

Cytogenetics: 17p13.1

Summary: This gene encodes a member of the recoverin family of neuronal calcium sensors. The encoded protein contains three calcium-binding EF-hand domains and may prolong the termination of the phototransduction cascade in the retina by blocking the phosphorylation of photo-activated rhodopsin. Recoverin may be the antigen responsible for cancer-associated retinopathy. [provided by RefSeq, Jul 2008]

Product images:



Coomassie blue staining of purified RCVRN protein (Cat# [TP300428]). The protein was produced from HEK293T cells transfected with RCVRN cDNA clone (Cat# [RC200428]) using MegaTran 2.0 (Cat# [TT210002]).