

Product datasheet for **MR231222**

Adam8 (NM_001291066) Mouse Tagged ORF Clone

Product data:

Product Type:	Expression Plasmids
Product Name:	Adam8 (NM_001291066) Mouse Tagged ORF Clone
Tag:	Myc-DDK
Symbol:	Adam8
Synonyms:	ADAM 8; CD156; CD156a; E430039A18Rik; MS; MS2
Vector:	pCMV6-Entry (PS100001)
E. coli Selection:	Kanamycin (25 ug/mL)
Cell Selection:	Neomycin



[View online »](#)

ORF Nucleotide
Sequence:

>MR231222 representing NM_001291066
Red=Cloning site Blue=ORF Green=Tags(s)

TTTTGTAATACGACTCACTATAGGGCGGCCGGGAATTCGTCGACTGGATCCGGTACCGAGGAGATCTGCC
GCC**CGGATCGCC**

ATGCTTGGCCTCTGGCTGCTCAGCGTCTTATGGACACCAGTAGCCCTGGACCTCCTTTGCCCATGTGA
AACAGTATGAAGTGGTTTGGCCTCGGCGCTAGCTGCATCCCGCTCCCGCAGAGCCCTGCCCTCCCACTG
GGCCAGTACCCAGAGAGTCTGAGCTATGCTCTTGGGACCAGCGGGCACGTTTTTACCCTGCACCTTCGA
AAGAACAGGGACCTGCTGGGCTCAAGCTACACAGAGACCTACTCAGCTGCCAATGGCTCTGAGGTGACAG
AGCAACTGCAGGAGCAGGACCATTGCTCTACCAAGGCCATGTGGAAGGGTACGAGGGCTCAGCTGCCAG
TATTAGCACCTGTGCTGGCCTCAGGGGCTTTTTCCGAGTTGGGTCCACTGTCCACTTGATTGAGCCTCTG
GATGCTGATGAAGAGGGGCAACATGCGATGTATCAGGCAAAGCATCTGCAACAGAAGGCTGGGACCTGTG
GGGTCAAAGATACCAACCTGAATGACCTAGGGCCTCGGCATTAGAAATATACAGGGCTCAGCCACGGAA
CTGGCTGATACCCAGAGAAACCCGCTATGTGGAGTTGTATGTGGTTGCAGACAGCCAAGAGTTCCAGAAG
TTGGGGAGCAGAGAGCCGTGCGCCAGCGAGTGTGGAGTTGTAACCACGTGGACAAGCTTTATCAGG
AACTCAGTTTTTCGAGTTGCTCTGGTGGGCTGGAGATCTGGAACAAGGACAAATTCTACATCAGCCGCTA
TGCCAACGTGACACTGGAGAACTTCTTGTCTGGAGGGAACAGAACTTGCAAGGGCAGCACCCACATGAC
AACGTGCAACTTATCACGGGGTGTGATTCATTGGGAGCACTGTTGGACTGGTAAGGTGTCTGCCCTGT
GTTCCCGTCACTCCGGAGCTGTGAATCAGGACCACTCCAAGAATCCATTGGTGTAGCCTCCACCATGGC
CCATGAGCTGGCCACAACCTGGGCATGAGCCATGATGAGGACATTCCAGGATGCTACTGTCTGAACCA
CGGAGGGTGGTGGCTGCATCATGACCGAAAGCATCGGCTCCAAGTTCACAGGATATTCAGCAGGTGTA
GCAAGATTGACCTAGAGTCATTCTGTGACAAAACCCAGACAGGCTGCCTGACCAATGTTCCAGATGTCAA
CCGGTTGCTGGGTGGCCCTGTGTGTGAAACCTGTTTGTGGAGCATGGAGAGCAGTGTGACTGTGGCACA
CCTCAGGACTGTCAAACCCCTGCTGCAATGCCACCACTTGCCAGCTGGTCAAGGGGCGAGAGTGTGCCA
GTGGTACCTGTTGTATGAATGCAAGGTGAAGCCAGCTGGAGAGGTGTGTCGTCTCAGTAAGGACAAATG
TGACCTGGAGGAGTTCTGTGATGGCCGGAAGCCAACATGTCCCGAAGATGCCTTCCAACAGAATGGCACT
CCCTGCCAGGGGCTACTGCTTTGATGGGAGCTGTCCACCCCTGGCACAGCAGTCCCGGGTCAATGGGAGGAT
GGCCAGGTGCTCGGTAGCAGCCGACTCCTGCTATACCTTTAGCATCCCTCCGGGCTGCAATGGGAGGAT
GTACTCTGGCAGGATCAACCGGTGTGGAGCGCTGTACTGTGAGGGAGGCCAGAAGCCCTTGAACGCTCC
TTCTGCACTTTCTCCTCCAACCATGGAGTCTGCCATGCTCTTGGCACAGGCAGCAACATTGACACCTTTG
AGCTGGTATTGCAGGGCACCAAGTGCAGAGGGGAAAGGTTTGCATGGATGGAAGCTGCCAGGACCTCCG
TGTATACAGATCTGAAAACCTGCTCTGCTAAATGCAACAACCATGGGGTATGCAACCACAAGGGGAGTGC
CACTGTACAAGGGCTGGGCACCACCCAACCTGTGTACAGCGGCTGGCAGATGTATCAGATGAAACAAGCAG
CGTCTACGAGCCTCCAGTCAAGTGTGGTTGTGGTCTTGGTGTATCCTGGTGGCTGCGATGGTCACTGTCG
AGGCATCGTCATCTACCGAAAGGCTCCGAGACAAATCCAGAGGAGGAGTGTGGCACCCAAGCCTATCTCG
GGGCTCTCCAACCCCTATTCTACACAAGGGACAGCAGCCTGCCAGCTAAGAACAGGCCTCCAGACCCCT
CTGAGACAGTTTCTACCAACCAGCCCCAAGACCCATAGTGAAACCAAGAGGCCCTCCCTGCACCTCC
AGGTGCTGTGCCAGTTCACCACTCCAGTTCCTGTTTATGCCCAAAGATACCAAAATCAGTTTAGACCT
GATCCTCCCAAGCCCTCCAGAGCTGAAACCAAGCAGGTCAAGCCAACCTTTGCACCCCGACAC
CACCAGTCAAGCCCGGGACTGGAGGACGGTGCCTGGAGCAACTCAGGGAGCTGGTGGAGCAAGGTTGC
TCTGAAGGTCCCATCCAGAAGAGG

ACGCGTACGCGGCGCTCGAGCAGAACTCATCTCAGAAGAGGATCTGGCAGCAATGATATCCTGGATT
ACAAGGATGACGACGATAAGGTTTAA

Protein Sequence: >MR231222 representing NM_001291066
Red=Cloning site Green=Tags(s)

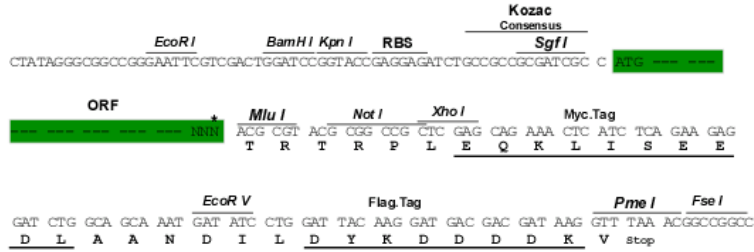
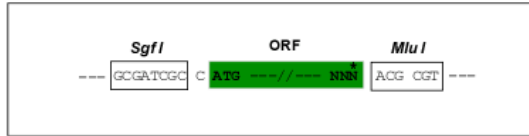
MLGLWLLSVLWTPVAPGPPLPHVKQYEVVPRRLAASRSRRALPSHWGQYPELSYALGTSGHVFTLHLR
KNRDL LGSSY TETYS AANGSEVTEQLQE QDHCLYQGHVEGYEGSAASISTCAGLRGFFRVGSTVHLIEPL
DADEEGQHAMYQAKHLQQKAGTCGVKDTNLDLGPRALEIYRAQPRNWLIPRETRYVELYVVADSQEFQK
LGSREAVRQRVLEVVNHVDKLYQELSFRVVLVGLEIWNKDKFYISRYANVTLENFLSWREQNLQGQHPHD
NVQLITGVDFIGSTVGLAKVSALCSRHS GAVNQDHSKNSIGVASTMAHELGHNLGMSHDEDIPGCYCPEP
REGGGC IMTESIGSKFPRIFSRCSKIDLESFVTKPQTGCLTNVPDVNRFVGGPVCGNLFVEHGEQCDCGT
PQDCQNPCNATT CQLVKGAECASGTCHECKVKPAGEVCRLSKDKCDLEEFCDGRKPTCPEDAFQQNGT
PCPGGYCFDGS CPTLAQQCRDLWGP GARVAADSCYTF SIPPGCNGRMYSGRINRCGALYCEGGQKPLERS
FCTFSSNHGVCHALGTGSNIDTFELVLQGTKCEEKVCMDGSCQDLRVYRSENC SAKCNNHGVCNHHKREC
HCHKGWAPPNCVQRLADVSDEQAAS TSLPVSVVVVLVILVAAMVIVAGIVIYRKAPRQIQRRSVAPKPI S
GLSNPLFYTRDSSLPAKNRPPDPSETVSTNQPPRPVIVPKRPPPAPP GAVSSSPLPVPVYAPKIPNQFRP
DPPTKPLPELKPQVKPTFAPPTPPVKPGTGGTVPGATQGAGEPKVALKVPIQKR

TRTRPLEQKLI SEEDLAANDILDYKDDDDKV

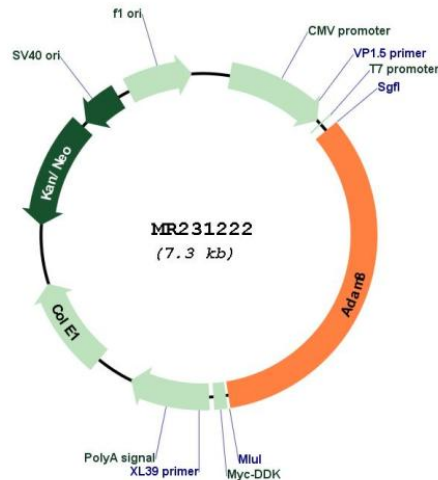
Restriction Sites: Sgfl-MluI

Cloning Scheme:

Cloning sites used for ORF Shutting:



* The last codon before the Stop codon of the ORF

Plasmid Map:


ACCN: NM_001291066

ORF Size: 2475 bp

OTI Disclaimer: The molecular sequence of this clone aligns with the gene accession number as a point of reference only. However, individual transcript sequences of the same gene can differ through naturally occurring variations (e.g. polymorphisms), each with its own valid existence. This clone is substantially in agreement with the reference, but a complete review of all prevailing variants is recommended prior to use. [More info](#)

OTI Annotation: This clone was engineered to express the complete ORF with an expression tag. Expression varies depending on the nature of the gene.

Components: The ORF clone is ion-exchange column purified and shipped in a 2D barcoded Matrix tube containing 10ug of transfection-ready, dried plasmid DNA (reconstitute with 100 ul of water).

Reconstitution Method:

1. Centrifuge at 5,000xg for 5min.
2. Carefully open the tube and add 100ul of sterile water to dissolve the DNA.
3. Close the tube and incubate for 10 minutes at room temperature.
4. Briefly vortex the tube and then do a quick spin (less than 5000xg) to concentrate the liquid at the bottom.
5. Store the suspended plasmid at -20°C. The DNA is stable for at least one year from date of shipping when stored at -20°C.

RefSeq: [NM_001291066.2](#), [NP_001277995.1](#)

RefSeq Size: 3114 bp

RefSeq ORF: 2478 bp

Locus ID: 11501

Cytogenetics: 7 F4

MW: 90.4 kDa

Gene Summary: This gene encodes a member of the Adam family of proteins that contain the disintegrin and metalloprotease domains. The encoded protein is localized to the cell surface, where it is involved in the remodeling of extracellular matrix and cell migration. Mice lacking the encoded protein display persistent inflammation upon treatment with allergens. Alternative splicing of this gene results in multiple variants. [provided by RefSeq, Mar 2015]