

Product datasheet for MR227370L2

Twist1 (NM_011658) Mouse Tagged Lenti ORF Clone

Product data:

Product Type:	Expression Plasmids
Product Name:	Twist1 (NM_011658) Mouse Tagged Lenti ORF Clone
Tag:	mGFP
Symbol:	Twist1
Synonyms:	bHLHa; bHLHa38; M-Twij; M-Twist; pd; Pde; pdt; Pluri; Ska; Ska10; Skā Twist
Mammalian Cell Selection:	None
Vector:	pLenti-C-mGFP (PS100071)
E. coli Selection:	Chloramphenicol (34 ug/mL)
ORF Nucleotide Sequence:	The ORF insert of this clone is exactly the same as(MR227370).
Restriction Sites:	SgfI-MluI
Cloning Scheme:	

Cloning sites used for ORF Shuttling:



* The last codon before the Stop codon of the ORF.

ACCN:	NM_011658
ORF Size:	618 bp



[View online »](#)

OTI Disclaimer: Due to the inherent nature of this plasmid, standard methods to replicate additional amounts of DNA in E. coli are highly likely to result in mutations and/or rearrangements. Therefore, OriGene does not guarantee the capability to replicate this plasmid DNA. Additional amounts of DNA can be purchased from OriGene with batch-specific, full-sequence verification at a reduced cost. Please contact our customer care team at custsupport@origene.com or by calling 301.340.3188 option 3 for pricing and delivery.

The molecular sequence of this clone aligns with the gene accession number as a point of reference only. However, individual transcript sequences of the same gene can differ through naturally occurring variations (e.g. polymorphisms), each with its own valid existence. This clone is substantially in agreement with the reference, but a complete review of all prevailing variants is recommended prior to use. [More info](#)

OTI Annotation: This clone was engineered to express the complete ORF with an expression tag. Expression varies depending on the nature of the gene.

Components: The ORF clone is ion-exchange column purified and shipped in a 2D barcoded Matrix tube containing 10ug of transfection-ready, dried plasmid DNA (reconstitute with 100 ul of water).

Reconstitution Method:

1. Centrifuge at 5,000xg for 5min.
2. Carefully open the tube and add 100ul of sterile water to dissolve the DNA.
3. Close the tube and incubate for 10 minutes at room temperature.
4. Briefly vortex the tube and then do a quick spin (less than 5000xg) to concentrate the liquid at the bottom.
5. Store the suspended plasmid at -20°C. The DNA is stable for at least one year from date of shipping when stored at -20°C.

RefSeq: [NM_011658.2](#), [NP_035788.1](#)

RefSeq Size: 1665 bp

RefSeq ORF: 621 bp

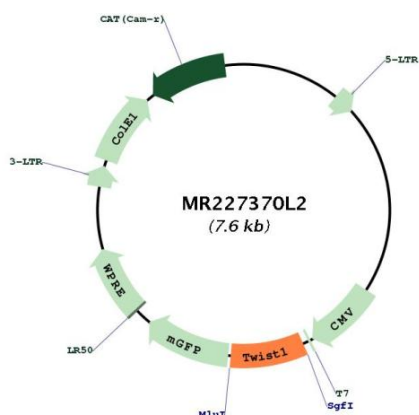
Locus ID: 22160

UniProt ID: [P26687](#)

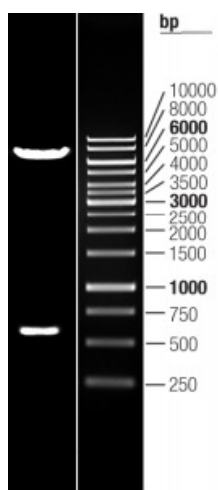
Cytogenetics: 12 14.81 cM

Gene Summary: Basic helix-loop-helix (bHLH) transcription factors have been implicated in cell lineage determination and differentiation. This gene encodes a bHLH transcription factor that is evolutionarily conserved from invertebrates to humans, and was originally identified in Drosophila as an essential gene involved in early mesoderm development and dorsal-ventral patterning in the embryo. This protein plays a role in cancer by regulating the epithelial-mesenchymal transition (EMT), a process that is critical for metastasis initiation, and promoting tumor progression. Mutations in the human gene are associated with Saethre-Chotzen syndrome (SCS). Mice with heterozygous mutations in this gene exhibit cranofacial and structural defects similar to those seen in human SCS patients. [provided by RefSeq, Sep 2015]

Product images:



Circular map for MR227370L2



Double digestion of MR227370L2 using SgfI and MluI