

Product datasheet for MR220067

Ccdc103 (NM_028492) Mouse Tagged ORF Clone

Product data:

Product Type:	Expression Plasmids
Product Name:	Ccdc103 (NM_028492) Mouse Tagged ORF Clone
Tag:	Myc-DDK
Symbol:	Ccdc103
Synonyms:	1700039D13Rik
Mammalian Cell Selection:	Neomycin
Vector:	pCMV6-Entry (PS100001)
E. coli Selection:	Kanamycin (25 ug/mL)
ORF Nucleotide Sequence:	>MR220067 ORF sequence Red=Cloning site Blue=ORF Green=Tags(s)

TTTTGTAATACGACTCACTATAGGGCGCCGGGAATTCGTCGACTGGATCCGGTACCGAGGAGATCTGCC
GCC**CGATCGCC**

ATGGAGAAGAACGATGTAATCAACTTCAAGGCCCTGGAGAAAGAGCTGCAGGCTGCCCTTGCTGCTGACG
AGAAGTACAAAAGGGAGAACGCAGCCAAGTTACGGGCAGTTGAGCAAAGGGTGCCTTCTATGAGGAGTT
CAGAGGTATTGTTCTTGATCACACCTGAAACCTCTGGAACAAAAGGACAAGATGGGAGGAAAGAGATTT
GTGCCCTGGAATTGTCACTACTCGGAAAGGACTTCTCAAGATGTGGTCACTGAAATACCCAGGAGA
AATCACCTTCCAGCCCACCCTCTGCAGAATTTACCGTGATTGGCGGCACACTTAAGAAGTGGGCC
AGAGCGCTACCAGGCCCTACTTCAGCTTGGGGGCCCAAGCTGGGCCACCTCTCCAGATGGATGTGGGC
TTTGGACTTCTTGGGAGCTGCTGGTGGCATTGGCTGAGCACGCGAGGCTGAGCGACCGGACAGCAGTGC
TGGGGATTCTGCACAGCCTGGCTAACACTGGGCGGTTCAACTTGAACCTGAGCCTGCTGAGCCATGCAGA
GCGAGAGAGCTGCCAGCGCCTGTTTCAGAAGTTGCAAGCCATGAGCACCACCAGACCCATGCAGGAGGGC
CTCACTGTGGAGGAGCCATCTGCTGGGCTACAGGGAGAAGAAGGGCTCTACAGGAGCTGCTAGAAGTGT
ATGGAGTCCAT

ACGCGTACGCGGCCGCTCGAGCAGAACTCATCTCAGAAGAGGATCTGGCAGCAAATGATATCCTGGATT
ACAAGGATGACGACGATAAGGTTTAA



[View online »](#)

Protein Sequence: >MR220067 protein sequence
Red=Cloning site Green=Tags(s)

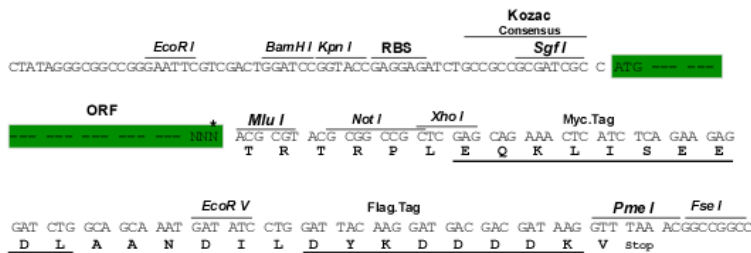
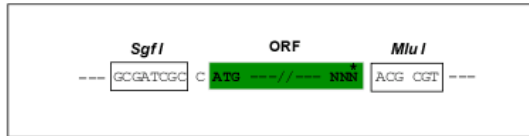
MEKNDVINFKALEKELQAALAADEKYKRENAAKLRAVEQRVPSYEEFRGIVLASHLKPLEQKDKMGGKRF
 VPWNCHTTRETSQDVVTEIPQEKSPFQPTTSAEFYRDWRRHLRSGPERYQALLQLGGPKLGHLFQMDVG
 FLLGELLVALAEHARLSDRTAVLGILHSLANTGRFNLNLSLLSHAERESCQRLFQKLQAMSTTRPMQEG
 LTVEEPSAGLQGEGLLQELLELYGVH

TRTRPLEQKLISEEDLAANDILDYKDDDDKV

Restriction Sites: Sgfl-MluI

Cloning Scheme:

Cloning sites used for ORF Shuttling:



ACCN: NM_028492

ORF Size: 714 bp

OTI Disclaimer: The molecular sequence of this clone aligns with the gene accession number as a point of reference only. However, individual transcript sequences of the same gene can differ through naturally occurring variations (e.g. polymorphisms), each with its own valid existence. This clone is substantially in agreement with the reference, but a complete review of all prevailing variants is recommended prior to use. [More info](#)

OTI Annotation: This clone was engineered to express the complete ORF with an expression tag. Expression varies depending on the nature of the gene.

Components: The ORF clone is ion-exchange column purified and shipped in a 2D barcoded Matrix tube containing 10ug of transfection-ready, dried plasmid DNA (reconstitute with 100 ul of water).

Reconstitution Method:

1. Centrifuge at 5,000xg for 5min.
2. Carefully open the tube and add 100ul of sterile water to dissolve the DNA.
3. Close the tube and incubate for 10 minutes at room temperature.
4. Briefly vortex the tube and then do a quick spin (less than 5000xg) to concentrate the liquid at the bottom.
5. Store the suspended plasmid at -20°C. The DNA is stable for at least one year from date of shipping when stored at -20°C.

RefSeq: [NM_028492.3](#)

RefSeq Size: 1800 bp

RefSeq ORF: 714 bp

Locus ID: 73293

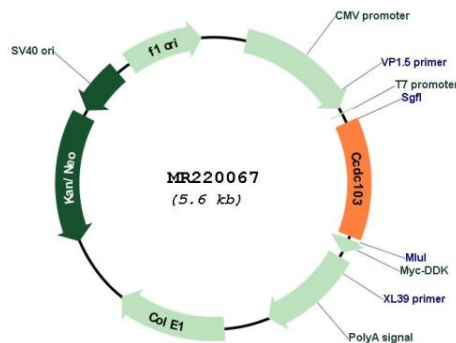
UniProt ID: [Q9D9P2](#)

Cytogenetics: 11 E1

MW: 26.9 kDa

Gene Summary: Dynein-attachment factor required for cilia motility.[UniProtKB/Swiss-Prot Function]

Product images:



Circular map for MR220067