

Product datasheet for **MR219702**

Lgr5 (NM_010195) Mouse Tagged ORF Clone

Product data:

Product Type:	Expression Plasmids
Product Name:	Lgr5 (NM_010195) Mouse Tagged ORF Clone
Tag:	Myc-DDK
Symbol:	Lgr5
Synonyms:	FEX; Gpr; Gpr49
Mammalian Cell Selection:	Neomycin
Vector:	pCMV6-Entry (PS100001)
E. coli Selection:	Kanamycin (25 ug/mL)



[View online »](#)

ORF Nucleotide Sequence:

>MR219702 representing NM_010195
 Red=Cloning site Blue=ORF Green=Tags(s)

CTATAGGGCGGCCGGAATTCGTGCGACTGGATCCGGTACCGAGGAGATCTGCC
 GCC**GCGATCGCC**

ATGGACACCTCCTGCGTCCACATGCTCCTGTCTTGTGCGCTGCTGCAGTTGGTGGCCGCCGGCAGCT
 CACCGGGACCAGATGCGATACCGCGGGGCTGCCCATCACACTGTCACTGTGAGCTGGATGGCAGGATGCT
 GCTCAGGGTGGACTGCTCGGACCTGGGGCTCTCGGAGCTGCCCTCCAACCTCAGCGTCTTACCTCTAC
 CTGGACCTCAGTATGAACAACATCAGTCAGCTACCCGCCAGTCTCCTACATCGCCTCTGTTCTCTAGAAG
 AGTTACGTCTTGTGAAATGCTTTGACACACATCCCAAGGGAGCGTTCACGGGCTTCACAGCCTCAA
 AGTGCTTATGCTGCAGAACAACCAGCTGAGACAGGTTCCGGAGGAAGCGCTACAGAATTTGAGAAGCCTT
 CAATCCCTGCGCTAGATGCCAACACATCAGCTACGTGCCACCCAGCTGTTTCAGCGCCTGCCTCC
 TGAGGCACCTGTGGCTAGATGACAATGCTCTCACAGACGTCCCTGTCCAGGCTTTCAGAAGTTTATCAGC
 CCTGCAAGCCATGACCTTGGCCCTGAACAAAATACACCACATAGCAGACTACGCCTTTGGAAACCTTCC
 AGCCTCGTGGTTCGCATCTCCATAATAATAGAATCCACTCCCTGGGAAAGAAATGCTTTGATGGACTCC
 ACAGCCTGGAGACTTTAGATTTAAATTATAATAACCTTGATGAATCCCCACTGCAATCAAGACACTCTC
 CAACCTTAAGGAACTAGGATTCCACAGCAACAACATCAGGTCAATACCGGAGCGAGCGTTCGTAGGCAAC
 CCTTCTCTTATCACAATACACTTCTATGACAACCCCATCCAATTTGTTGGAGTATCTGCTTTTCAGCATT
 TGCCTGAACATAAGAACTGACTTTGAATGGTGCCTCGCACATTACTGAATTTCTCACTTGACAGGAAC
 TGCCACCCTGGAGAGTCTGACTTTAACTGGAGCAAAGATCTCATCTCTTCCCCAGGCCGTCTGTGATCAG
 TTACCTAATCTCCAAGTCTAGATTTGTCTTACAACCTACTCGAAGACTTACCCAGTTTGTGAGGCTTT
 AAAAATTCAGAAAATTGACCTGAGCATAACGAGATCTATGAAATTAAGGGCAGCAGCTTTTCAGCAGTT
 GTTTAACCTCCGATCTCTGAACCTTAGCATGGAATAAAATTGCTATCATTACCCCAATGCGTTTTCTACG
 TTGCCGTCTTAATAAAGTTGGACCTATCATCCAATCTCCTGTGCTCCTTCCCTGTGACTGGTTACATG
 GTTTAACTCACTTAAAATTAACAGGGAACCGAGCCTTACAGAGCCTGATACCATCTGCAAACTTCCAGAG
 GCTCAAGATTATAGAAATGCCATCTGCTTACCAGTGTGTGCAATTTGGGGGTGTGAGAATGTCTATAAA
 ATTTCTAACCAATGGAATAAAGACGACGGCAACAGTGTGGACGACCTTATAAGAAAGACGCTGGTTAT
 TTCAAGTTCAGATGAGCGGGACCTTGAAGATTTCTACTTGACTTTGAGGAAGACCTGAAGGCCCTTCA
 CTCGGTGCAGTGCCTTCCCCAGTCCCTTCAAGCCCTGTGAGCACCTATTTGGTAGCTGGCTGATC
 CGAATCGGGGTGTGGACCACGGCAGTACTGGCGCTTTCCTGCAATGCCTTGGTGGCTTTGACCGTGTTC
 GAACTCCTCTGTACATCTTCCATAAAGCTGCTAATTGGGGTAATCGCGGTAGTGGACATTCTCATGGG
 GGTCTCCAGTGTGCTGGCTGCCGTGGATGCATTCACTTTTGGCCGTTTTGCTCAGCACGGTGCCTGG
 TGGGAAGACGGAATCGGCTGCCAAATCGTTGGCTTCTGTCCATTTTGGCTTCCGAATCGTGCATCTTCC
 TGCTCACTCTGGCAGCGCTGGAACGAGGTTTTTCTGTCAAGTGTCTTTCGAAGTTTGAAGTGAAGCTCC
 CCTTTTAGCCTGAGAGCGATCGTTTTGCTATGTGCTCTTGGCCCTGACCATTGCCACAATCCCCTTG
 CTAGGAGGCAGTAAGTACAATGCCTCTCCCCTCTGCCTGCCCTTGGCCTTGGGGAGCCCAGCACCGG
 GCTACATGGTGGCTCTCGTGTGCTCAACTCTCTGTTTCTCATAATGACCATTGCCTACACAAAGCT
 CTACTGCAGTTTGGAGAAAGGAGAGCTGGAGAATCTTTGGGATTGTTTCGATGGTGAAGCACATTGCTCTG
 TTGCTCTTCGCCAACTGCATCCTTTACTGCCCGTGGCTTCTTATCCTTCTCCTTTTGTAAACCTCA
 CCTTTATCAGTCTGACGTCATTAATTTATACTTCTCGTGATCGTCCCCTTCTTCTGTCTCAACCC
 ACTTCTCTACATTGTCTTCAATCCCATTTTAAGGAGGATATGGGCAGCCTGGGAAAGCATACCCGTTTC
 TGGATGAGATCAAAACACGCGAGTCTGTGTCCATTAACCGGACGATGTTGAGAAACGGTCTGTGAGT
 CAACCCAAAGCCTTAGTATCCTTTACCCACGCCAGCATAGCCTATGACTTGCCTTCCACTTCCGGGGCATC
 ACCAGCTTACCCCATGACTGAAAGCTGTCATCTCTTTCAGTTGCATTTGCCATGTCTC

ACGCGTACGCGGCCGCTCGAGCAGAACTCATCTCTGAAGAGGATCTGGCAGCAATGATATCTGGATT
 ACAAGGATGACGACGATAAGGTTTAA

Restriction Sites:

Sgfl-Mlul

Cloning Scheme:


ACCN: NM_010195

ORF Size: 2721 bp

OTI Disclaimer: Due to the inherent nature of this plasmid, standard methods to replicate additional amounts of DNA in E. coli are highly likely to result in mutations and/or rearrangements. Therefore, OriGene does not guarantee the capability to replicate this plasmid DNA. Additional amounts of DNA can be purchased from OriGene with batch-specific, full-sequence verification at a reduced cost. Please contact our customer care team at custsupport@origene.com or by calling 301.340.3188 option 3 for pricing and delivery.

The molecular sequence of this clone aligns with the gene accession number as a point of reference only. However, individual transcript sequences of the same gene can differ through naturally occurring variations (e.g. polymorphisms), each with its own valid existence. This clone is substantially in agreement with the reference, but a complete review of all prevailing variants is recommended prior to use. [More info](#)

OTI Annotation: This clone was engineered to express the complete ORF with an expression tag. Expression varies depending on the nature of the gene.

Components: The ORF clone is ion-exchange column purified and shipped in a 2D barcoded Matrix tube containing 10ug of transfection-ready, dried plasmid DNA (reconstitute with 100 ul of water).

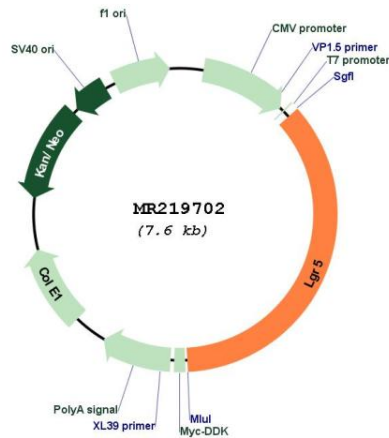
- Reconstitution Method:**
1. Centrifuge at 5,000xg for 5min.
 2. Carefully open the tube and add 100ul of sterile water to dissolve the DNA.
 3. Close the tube and incubate for 10 minutes at room temperature.
 4. Briefly vortex the tube and then do a quick spin (less than 5000xg) to concentrate the liquid at the bottom.
 5. Store the suspended plasmid at -20°C. The DNA is stable for at least one year from date of shipping when stored at -20°C.

RefSeq: [NM_010195.2](#), [NP_034325.2](#)

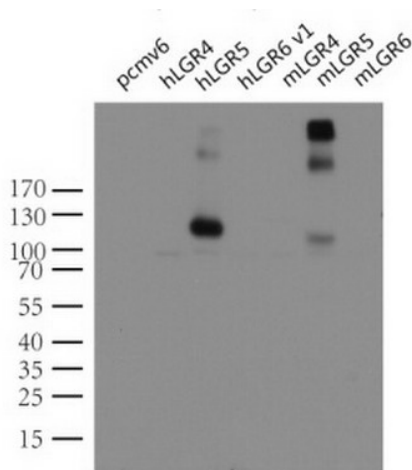
RefSeq Size: 4711 bp
 RefSeq ORF: 2724 bp
 Locus ID: 14160
 UniProt ID: [Q9Z1P4](#)
 Cytogenetics: 10 D2
 MW: 100.1 kDa

Gene Summary: The protein encoded by this gene is a leucine-rich repeat-containing receptor (LGR) and member of the G protein-coupled, 7-transmembrane receptor (GPCR) superfamily. The encoded protein is a receptor for R-spondins and is involved in the canonical Wnt signaling pathway. This protein plays a role in the formation and maintenance of adult intestinal stem cells during postembryonic development. [provided by RefSeq, Sep 2015]

Product images:



Circular map for MR219702



Western blot analysis of extracts (10ug) from 7 different transiently transfected HEK293T cell lysates by using anti-LGR5 monoclonal antibody (Cat# [UM800104]). Lanes: control vector pCMV6-Entry (Cat# [PS100001]); human LGR4 (Cat# [RC221345]), LGR5 (Cat# [RC212825]) and LGR6 (Cat# [RC219284]), and mouse LGR4 (Cat# [MR219497]), LGR5 (Cat#MR219702) and LGR6 (Cat# [MR224646]).