

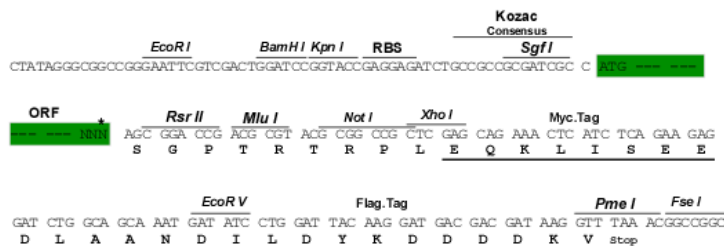
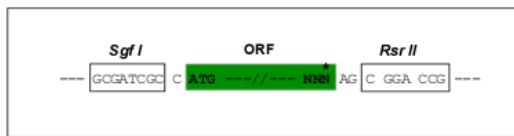
Product datasheet for MR215287

GIs (NM_001081081) Mouse Tagged ORF Clone

Product data:

Product Type: Expression Plasmids
 Product Name: GIs (NM_001081081) Mouse Tagged ORF Clone
 Tag: Myc-DDK
 Symbol: GIs
 Synonyms: 6330442B14; AI314027; B230365M23Rik
 Mammalian Cell Selection: Neomycin
 Vector: pCMV6-Entry2 (PS100063)
 E. coli Selection: Kanamycin (25 ug/mL)
 Chromatograms: https://cdn.origene.com/chromatograms/mg9114_e09.zip
 Restriction Sites: SgfI-RsrII
 Cloning Scheme:

Cloning sites used for ORF Shuttling:



* The last codon before the Stop codon of the ORF

ACCN: NM_001081081
 ORF Size: 2022 bp



[View online >](#)

OTI Disclaimer: Due to the inherent nature of this plasmid, standard methods to replicate additional amounts of DNA in E. coli are highly likely to result in mutations and/or rearrangements. Therefore, OriGene does not guarantee the capability to replicate this plasmid DNA. Additional amounts of DNA can be purchased from OriGene with batch-specific, full-sequence verification at a reduced cost. Please contact our customer care team at custsupport@origene.com or by calling 301.340.3188 option 3 for pricing and delivery.

The molecular sequence of this clone aligns with the gene accession number as a point of reference only. However, individual transcript sequences of the same gene can differ through naturally occurring variations (e.g. polymorphisms), each with its own valid existence. This clone is substantially in agreement with the reference, but a complete review of all prevailing variants is recommended prior to use. [More info](#)

OTI Annotation: This clone was engineered to express the complete ORF with an expression tag. Expression varies depending on the nature of the gene.

Components: The ORF clone is ion-exchange column purified and shipped in a 2D barcoded Matrix tube containing 10ug of transfection-ready, dried plasmid DNA (reconstitute with 100 ul of water).

Reconstitution Method:

1. Centrifuge at 5,000xg for 5min.
2. Carefully open the tube and add 100ul of sterile water to dissolve the DNA.
3. Close the tube and incubate for 10 minutes at room temperature.
4. Briefly vortex the tube and then do a quick spin (less than 5000xg) to concentrate the liquid at the bottom.
5. Store the suspended plasmid at -20°C. The DNA is stable for at least one year from date of shipping when stored at -20°C.

RefSeq: [NM_001081081.2](#), [NP_001074550.1](#)

RefSeq Size: 4974 bp

RefSeq ORF: 2025 bp

Locus ID: 14660

UniProt ID: [D3Z7P3](#)

Cytogenetics: 1 26.86 cM

MW: 74.4 kDa

Gene Summary: Catalyzes the first reaction in the primary pathway for the renal catabolism of glutamine. Plays a role in maintaining acid-base homeostasis. Regulates the levels of the neurotransmitter glutamate in the brain.[UniProtKB/Swiss-Prot Function]