

Product datasheet for MR213717

D130040H23Rik (NM_172491) Mouse Tagged ORF Clone

Product data:

Product Type:	Expression Plasmids
Product Name:	D130040H23Rik (NM_172491) Mouse Tagged ORF Clone
Tag:	Myc-DDK
Symbol:	D130040H23Rik
Mammalian Cell Selection:	Neomycin
Vector:	pCMV6-Entry (PS100001)
E. coli Selection:	Kanamycin (25 ug/mL)
ORF Nucleotide Sequence:	>MR213717 representing NM_172491 Red=Cloning site Blue=ORF Green=Tags(s)

TTTTGTAATACGACTCACTATAGGGCGCCGGGAATTCGTCGACTGGATCCGGTACCGAGGAGATCTGCC
GCC**CGATCGCC**

ATGATATTGAAGAACATTTTTGTCAAATCTAGAATACATAGAAGGCATGAAAGAGTCTGGAGAGAA
ACCCTATGAATATACTCAGTGTGGTAAAGCCTTGCACAACACAGTCATCTCAAGGCATGAAAGAATT
CTTACTGGAAAGAAACCCATGAATGTAATCAATGTGGTAAAGCCTTTATATGTCACAGTAGTCTTTCAA
ATCATGAAAAGCATCATACTGGAGAGAAACCATACAAATGTATTGAATGTGGTAAAGCCTTTTACAACA
GAGTCACCTCCAGATACATAAAAGAATACATACTGGAGAGAAGCCCTATGAATGTAATCAGTGTGCTAAA
GCCTTTTACAACAGAGCCATCTCCAGAAACATAAAAGAACACATACTGGAGAGAAGCCCTACAAATGTA
ATCAATGTAATAAAGACTTTTACAACAAAGTCATCTCCAAATCCATAGAAGAACACATACTGGAGAGAA
ACCCTACAAATGTAATCAATGTGATAAAGTCTTTTACAACAACTCATCTCCAAAGACATAAAAGAACA
CATACTGGAGAGAAGCCCTACAAATGTAATCAATGTGGTAAAGCCTTTGCTCATCACAGTTATCTTGAAA
AACATCAAAGAACACACACTGGAGAGAAACCTTATCAATGCAACCAATGTGGTAAAGCCTTTGCACATCA
CAGTTATCTCCAAAACATAAAAGAACACACACTGGAGAGAAACCTTATCAATGCAATCAATGTGGTAAA
ACTTTTGCATGTCACAGAAGTCTTCAAATTCATGAAAGAATTCATACTGGAGAGAAACCTTATGAATGTT
GTCAATGTGGTAAAGCCTTTGCACATCACAATTATCTCCGAAACCATAAAAGAACACATACTGGAGAGAA
CCCTACAAATGTAAGGAATGCGGTAAAGCCTTTGCATGTCACAGTCATCTTCAAAGGCATGAAAGAGTT
CATACTGGAGAGAAACCCATGAGTGTAGTCAATGTGGTAAAGCCTTTGCATGTCACAGCAGTCTTCAAA
ATCATGAAAAAATCATATTGAAGAGAACTCTATGAATTATGTAAGCAATATGGTAACGCCCTTTGTACA
TCACAGTTATCTGAAAACATAAAACACAAAAGAATATATTCTACAGAAATATAATCAGGATTTTAAAGT
CATGTCACAGTTGCTTTGAGGACA

ACGCGTACGCGGCGCTCGAGCAGAACTCATCTCAGAAGAGGATCTGGCAGCAATGATATCCTGGATT
ACAAGGATGACGACGATAAAGGTTTAA



Protein Sequence: >MR213717 representing NM_172491
Red=Cloning site Green=Tags(s)

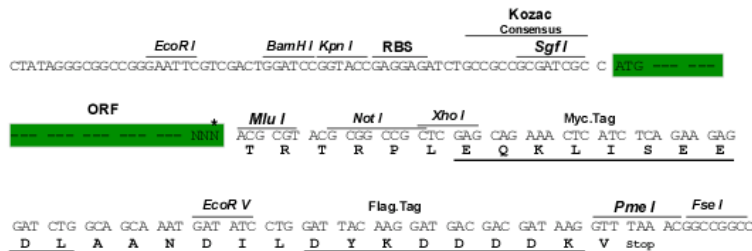
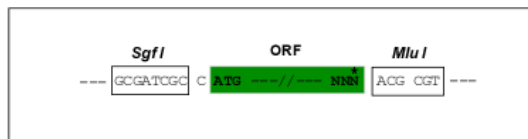
MILKNIFVKILEYIEGMKEVLERNPMNILSVVKPLHNTVIFKGMKEFLLERNPMNVINNVKPLYVTVVFQ
 IMKSIILERNHTNVLNVKPFHNRVTSRYIKEYILERSPMNVISVLKPFHNRAISRNIKEHILERSPTNV
 INVIKTFHNKVISKSIEEHILERNPTNVINVIKSFHNKLSKDIKEHILERSPTNVINNVKPLLITVILK
 NIKEHTLERNLINATNVVVKPLHITVISKNIKEHTLERNLINAINVVKLLHVTEVFKFMKEFILERNLMNV
 VNVVRPLHITIISETIKEHILERTPTNVRNAVKPLHVTVIFKGMKEFILERNPMSVNVNVKPLHVTAVFK
 IMKKIILKRNSMNYVSNMVTPLYITVISENIKHKRIYSTEYNQDFKVMSQLSLRT

TRTRPLEQKLISEEDLAANDILDYKDDDDKV

Restriction Sites: SgfI-MluI

Cloning Scheme:

Cloning sites used for ORF Shuttling:



* The last codon before the Stop codon of the ORF

ACCN: NM_172491

ORF Size: 1215 bp

OTI Disclaimer: The molecular sequence of this clone aligns with the gene accession number as a point of reference only. However, individual transcript sequences of the same gene can differ through naturally occurring variations (e.g. polymorphisms), each with its own valid existence. This clone is substantially in agreement with the reference, but a complete review of all prevailing variants is recommended prior to use. [More info](#)

OTI Annotation: This clone was engineered to express the complete ORF with an expression tag. Expression varies depending on the nature of the gene.

Components: The ORF clone is ion-exchange column purified and shipped in a 2D barcoded Matrix tube containing 10ug of transfection-ready, dried plasmid DNA (reconstitute with 100 ul of water).

- Reconstitution Method:**
1. Centrifuge at 5,000xg for 5min.
 2. Carefully open the tube and add 100ul of sterile water to dissolve the DNA.
 3. Close the tube and incubate for 10 minutes at room temperature.
 4. Briefly vortex the tube and then do a quick spin (less than 5000xg) to concentrate the liquid at the bottom.
 5. Store the suspended plasmid at -20°C. The DNA is stable for at least one year from date of shipping when stored at -20°C.

RefSeq: [NM_172491.3](#)

RefSeq Size: 2002 bp

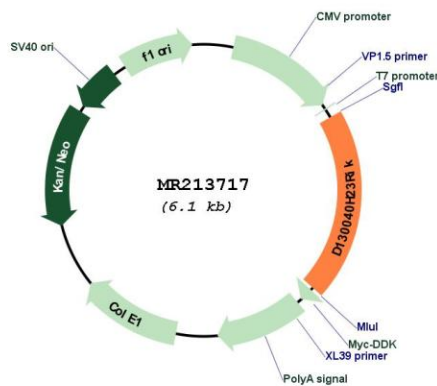
RefSeq ORF: 1218 bp

Locus ID: 211135

Cytogenetics: 8 B3.3

MW: 47.3 kDa

Product images:



Circular map for MR213717